

IHC*easy* TPSAB1 Ready-To-Use IHC Kit

Catalog Number: **KHC1160**

General Information

Sample type:
FFPE tissue
Cited sample type:
Reactivity:
Human
Cited Reactivity:

Assay type:
Immunohistochemistry
Primary antibody type:
Mouse Monoclonal
Secondary antibody type:
Polymer-HRP-Goat anti-Mouse

Kit Component

| Component | Size | Concentration |
|--------------------------|--------------------|---------------|
| Antigen Retrieval Buffer | 100 mL | 50× |
| Washing Buffer | 100 mL ×2 | 20× |
| Blocking Buffer | 5 mL | RTU |
| Primary Antibody | 5 mL | RTU |
| Secondary Antibody | 5 mL | RTU |
| Chromogen Component A | 0.2 mL | RTU |
| Chromogen Component B | 4 mL | RTU |
| Signal Enhancer | 5 mL | RTU |
| Counter Staining Reagent | 5 mL | RTU |
| Mounting Media | 5 mL | RTU |
| Control Slide | 1 slide (Optional) | FFPE |
| Datasheet | 1 Copy | |
| Manual | 1 Copy | |

Storage Instructions

All the reagents are stored at 2-8°C. The kit is stable for 6 months from the date of receipt.

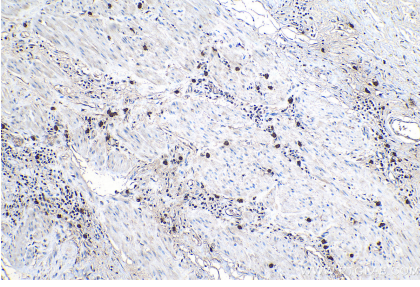
Background

TPSAB1(Tryptase alpha/beta-1) is also named as TPS1, TPS2, TPSB1 and belongs to the peptidase S1 family. It is the major neutral protease present in mast cells and secreted upon the coupled activation-degranulation response of this cell type.

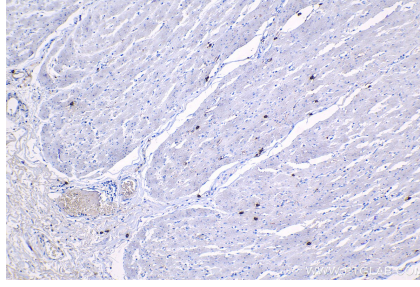
Synonyms

MCP7, TPS1, TPS2, TPSAB1, TPSB1, Tryptase 1, tryptase alpha/beta 1, Tryptase beta 1, Tryptase I

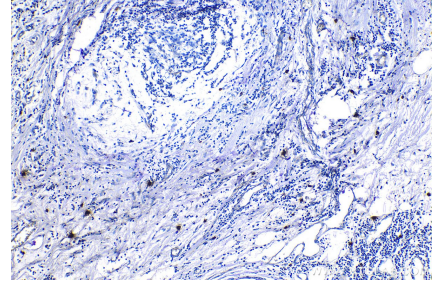
Selected Validation Data



Immunohistochemical analysis of paraffin-embedded human stomach cancer tissue slide using KHC1160 (TPSAB1 IHC Kit).



Immunohistochemical analysis of paraffin-embedded human colon tissue slide using KHC1160 (TPSAB1 IHC Kit).



Immunohistochemical analysis of paraffin-embedded human breast cancer tissue slide using KHC1160 (TPSAB1 IHC Kit).