

IHC*easy* TRIM59 Ready-To-Use IHC Kit

Catalog Number: **KHC1173**

General Information

Sample type:
FFPE tissue

Cited sample type:

Reactivity:
Human, Mouse, Rat

Cited Reactivity:

Assay type:
Immunohistochemistry

Primary antibody type:
Rabbit Polyclonal

Secondary antibody type:
Polymer-HRP-Goat anti-Rabbit

Kit Component

Component	Size	Concentration
Antigen Retrieval Buffer	100 mL	50×
Washing Buffer	100 mL ×2	20×
Blocking Buffer	5 mL	RTU
Primary Antibody	5 mL	RTU
Secondary Antibody	5 mL	RTU
Chromogen Component A	0.2 mL	RTU
Chromogen Component B	4 mL	RTU
Signal Enhancer	5 mL	RTU
Counter Staining Reagent	5 mL	RTU
Mounting Media	5 mL	RTU
Control Slide	1 slide (Optional)	FFPE
Datasheet	1 Copy	
Manual	1 Copy	

Storage Instructions

All the reagents are stored at 2-8°C. The kit is stable for 6 months from the date of receipt.

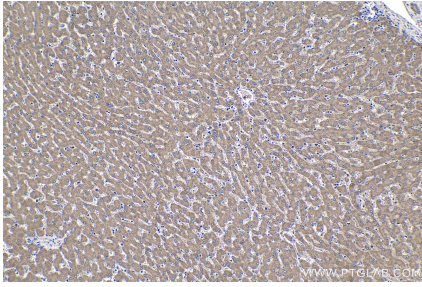
Background

TRIM59 belongs to the tripartite motif (TRIM) family. It functions as E3 ubiquitin ligases or an adaptor protein, and plays important roles in various types of human cancers.

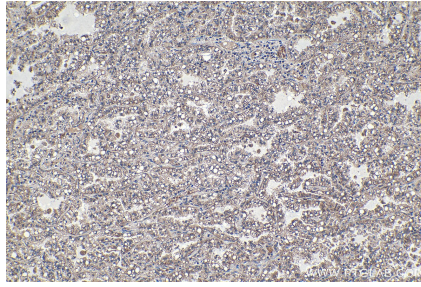
Synonyms

MRF1, RING finger protein 104, RNF104, TRIM57, TRIM59, tripartite motif containing 59, TSBF1, Tumor suppressor TSBF 1

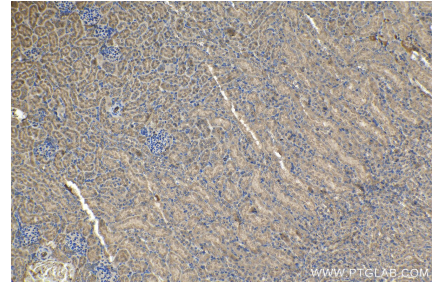
Selected Validation Data



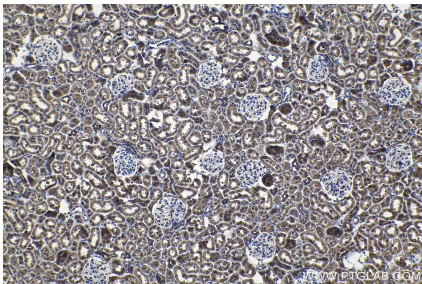
Immunohistochemical analysis of paraffin-embedded human liver tissue slide using KHC1173 (TRIM59 IHC Kit).



Immunohistochemical analysis of paraffin-embedded human lung cancer tissue slide using KHC1173 (TRIM59 IHC Kit).



Immunohistochemical analysis of paraffin-embedded mouse kidney tissue slide using KHC1173 (TRIM59 IHC Kit).



Immunohistochemical analysis of paraffin-embedded rat kidney tissue slide using KHC1173 (TRIM59 IHC Kit).