

IHC*easy* PTGES3 Ready-To-Use IHC Kit

Catalog Number: **KHC1186**

General Information

Sample type:
FFPE tissue

Cited sample type:

Reactivity:
Human, Mouse, Rat

Cited Reactivity:

Assay type:
Immunohistochemistry

Primary antibody type:
Rabbit Polyclonal

Secondary antibody type:
Polymer-HRP-Goat anti-Rabbit

Kit Component

Component	Size	Concentration
Antigen Retrieval Buffer	100 mL	50×
Washing Buffer	100 mL ×2	20×
Blocking Buffer	5 mL	RTU
Primary Antibody	5 mL	RTU
Secondary Antibody	5 mL	RTU
Chromogen Component A	0.2 mL	RTU
Chromogen Component B	4 mL	RTU
Signal Enhancer	5 mL	RTU
Counter Staining Reagent	5 mL	RTU
Mounting Media	5 mL	RTU
Control Slide	1 slide (Optional)	FFPE
Datasheet	1 Copy	
Manual	1 Copy	

Storage Instructions

All the reagents are stored at 2-8°C. The kit is stable for 6 months from the date of receipt.

Background

P23, encoded by the gene PTGES3, plays a key role in glucocorticoid signaling and was increased at the mRNA level in the DLPFC in individuals with schizophrenia. In the GR heterocomplex in vitro, p23 is an obligatory co-factor¹⁹ and is the limiting component of the complex⁴⁴, functioning to stabilize the interaction of the complex with GR in the cytoplasm. Paradoxically, p23 also acts in the nucleus to inhibit GR-mediated gene transcription and disassemble GR transcriptional machinery in the nucleus. In vivo, p23 is critical for appropriate glucocorticoid responsiveness.

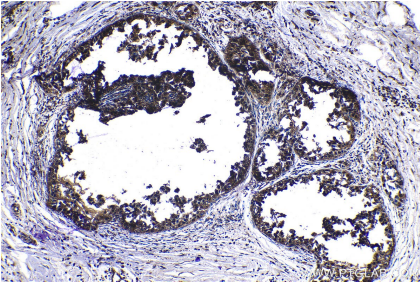
Synonyms

cPGES, Hsp90 co chaperone, P23, Prostaglandin E synthase 3, PTGES3, TEBP, Telomerase binding protein p23

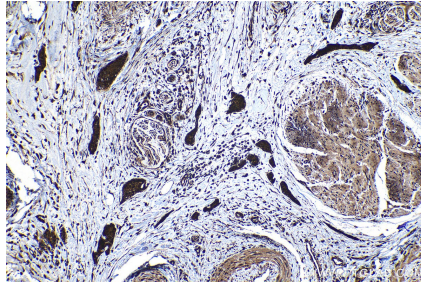
For technical support and original validation data for this product please contact:
T: 1 (888) 4PTGLAB (1-888-478-4522) (toll free in USA), or 1(312) 455-8498 (outside USA)
E: proteintech@ptglab.com
W: ptglab.com

This product is exclusively available under Proteintech Group brand and is not available to purchase from any other manufacturer.

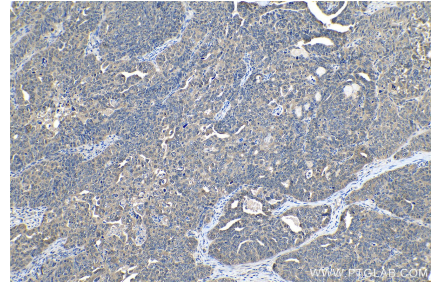
Selected Validation Data



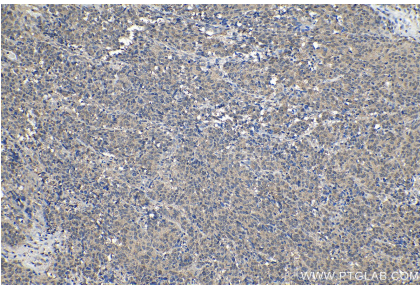
Immunohistochemical analysis of paraffin-embedded human breast cancer tissue slide using KHC1186 (PTGES3 IHC Kit).



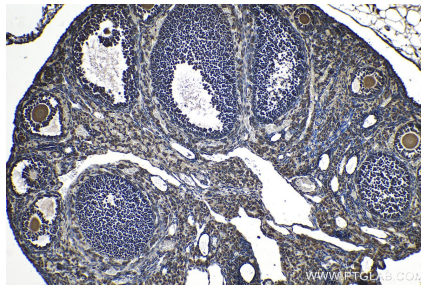
Immunohistochemical analysis of paraffin-embedded human urothelial carcinoma tissue slide using KHC1186 (PTGES3 IHC Kit).



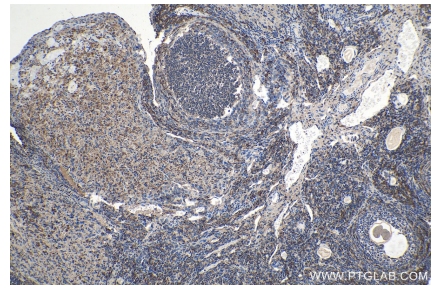
Immunohistochemical analysis of paraffin-embedded human ovary tumor tissue slide using KHC1186 (PTGES3 IHC Kit).



Immunohistochemical analysis of paraffin-embedded human stomach cancer tissue slide using KHC1186 (PTGES3 IHC Kit).



Immunohistochemical analysis of paraffin-embedded mouse ovary tissue slide using KHC1186 (PTGES3 IHC Kit).



Immunohistochemical analysis of paraffin-embedded rat ovary tissue slide using KHC1186 (PTGES3 IHC Kit).