

IHC*easy* TMEM25 Ready-To-Use IHC Kit

Catalog Number: **KHC1198**

General Information

Sample type:
FFPE tissue

Cited sample type:

Reactivity:
Human

Cited Reactivity:

Assay type:
Immunohistochemistry

Primary antibody type:
Rabbit Polyclonal

Secondary antibody type:
Polymer-HRP-Goat anti-Rabbit

Kit Component

Component	Size	Concentration
Antigen Retrieval Buffer	100 mL	50×
Washing Buffer	100 mL ×2	20×
Blocking Buffer	5 mL	RTU
Primary Antibody	5 mL	RTU
Secondary Antibody	5 mL	RTU
Chromogen Component A	0.2 mL	RTU
Chromogen Component B	4 mL	RTU
Signal Enhancer	5 mL	RTU
Counter Staining Reagent	5 mL	RTU
Mounting Media	5 mL	RTU
Control Slide	1 slide (Optional)	FFPE
Datasheet	1 Copy	
Manual	1 Copy	

Storage Instructions

All the reagents are stored at 2-8°C. The kit is stable for 6 months from the date of receipt.

Background

TMEM25 is a novel member of the immunoglobulin superfamily. BC042896 and AY358919 cDNAs are derived from human TMEM25 gene. TMEM25 isoform 1 (BC042896), consisting of exons 1-9, encodes a 366-aa transmembrane protein. TMEM25 isoform 2 (AY358919), consisting of exons 1-4 and 6-9, encodes a 322-aa secreted protein. Human TMEM25 gene are found to encode transmembrane-type as well as secreted-type proteins due to alternative splicing of exon-skipping type. TMEM25 mRNA is expressed in brain, including cerebellar cortex and hippocampus, as well as in neuroblastoma, brain tumors, and gastric cancer. TMEM25 is a target of pharmacogenomics in the field of oncology and regenerative medicine. TMEM25 mRNAs may be useful members of a panel of favorable prognostic and predictive markers for breast cancer.

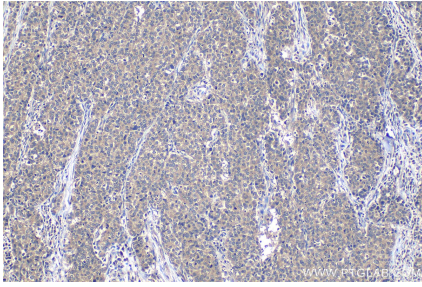
Synonyms

TMEM25, transmembrane protein 25

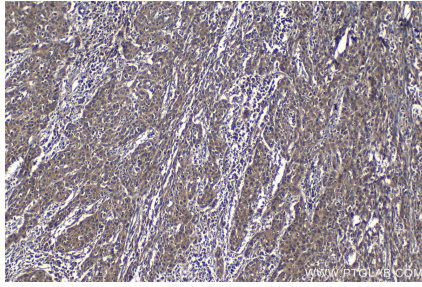
For technical support and original validation data for this product please contact:
T: 1 (888) 4PTGLAB (1-888-478-4522) (toll free in USA), or 1(312) 455-8498 (outside USA)
E: proteintech@ptglab.com
W: ptglab.com

This product is exclusively available under Proteintech Group brand and is not available to purchase from any other manufacturer.

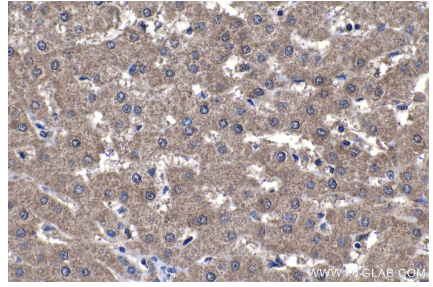
Selected Validation Data



Immunohistochemical analysis of paraffin-embedded human stomach cancer tissue slide using KHC1198 (TMEM25 IHC Kit).



Immunohistochemical analysis of paraffin-embedded human cervical cancer tissue slide using KHC1198 (TMEM25 IHC Kit).



Immunohistochemical analysis of paraffin-embedded human liver tissue slide using KHC1198 (TMEM25 IHC Kit).