

IHC*easy* TRIM26 Ready-To-Use IHC Kit

Catalog Number: **KHC1216**

General Information

Sample type:
FFPE tissue

Cited sample type:

Reactivity:
Human, Mouse, Rat

Cited Reactivity:

Assay type:
Immunohistochemistry

Primary antibody type:
Rabbit Polyclonal

Secondary antibody type:
Polymer-HRP-Goat anti-Rabbit

Kit Component

Component	Size	Concentration
Antigen Retrieval Buffer	100 mL	50×
Washing Buffer	100 mL ×2	20×
Blocking Buffer	5 mL	RTU
Primary Antibody	5 mL	RTU
Secondary Antibody	5 mL	RTU
Chromogen Component A	0.2 mL	RTU
Chromogen Component B	4 mL	RTU
Signal Enhancer	5 mL	RTU
Counter Staining Reagent	5 mL	RTU
Mounting Media	5 mL	RTU
Control Slide	1 slide (Optional)	FFPE
Datasheet	1 Copy	
Manual	1 Copy	

Storage Instructions

All the reagents are stored at 2-8°C. The kit is stable for 6 months from the date of receipt.

Background

TRIM26 is a member of the tripartite motif (TRIM) protein family composed of more than 70 members in human. TRIM proteins share a similar characteristic structure, which includes a RING (R) domain, one or two B-boxes (B), and a coiled coil (CC) domain in the N-terminal and a domain in the C-terminal with variable structures. TRIM26 potentiates virus-triggered IRF3, NF-κB activation, IFN-β induction, and cellular antiviral responses. Further investigation suggests that TRIM26 plays an important role in the antiviral innate immune response by bridging TBK1 to NEMO and mediating TBK1 activation.

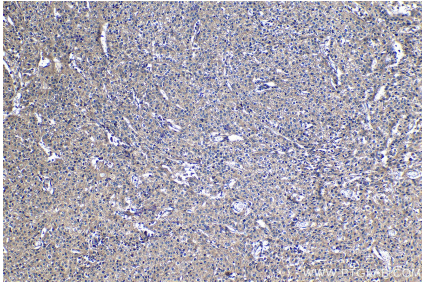
Synonyms

Acid finger protein, AFP, RING finger protein 95, RNF95, TRIM26, tripartite motif containing 26, Zinc finger protein 173, ZNF173

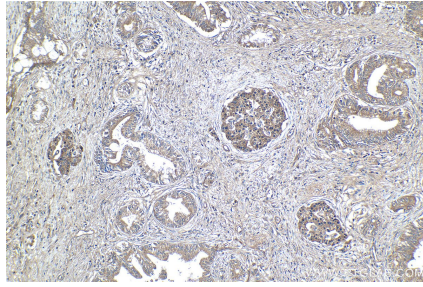
For technical support and original validation data for this product please contact:
T: 1 (888) 4PTGLAB (1-888-478-4522) (toll free in USA), or 1(312) 455-8498 (outside USA)
E: proteintech@ptglab.com
W: ptglab.com

This product is exclusively available under Proteintech Group brand and is not available to purchase from any other manufacturer.

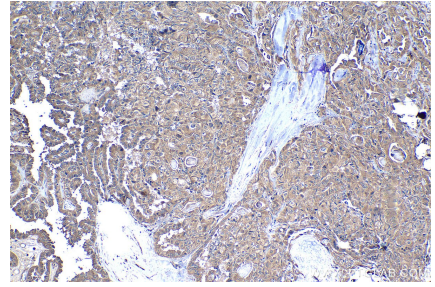
Selected Validation Data



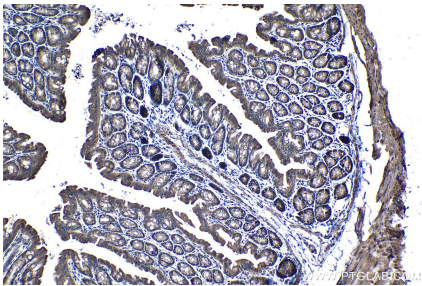
Immunohistochemical analysis of paraffin-embedded human cervical cancer tissue slide using KHC1216 (TRIM26 IHC Kit).



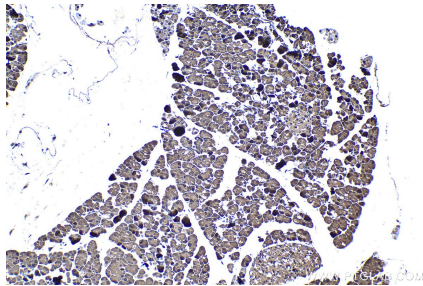
Immunohistochemical analysis of paraffin-embedded human pancreas cancer tissue slide using KHC1216 (TRIM26 IHC Kit).



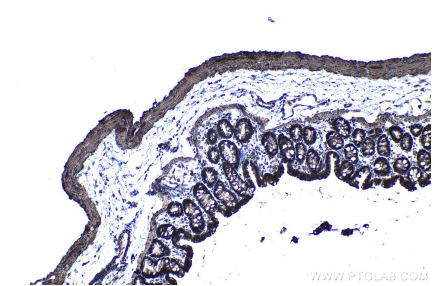
Immunohistochemical analysis of paraffin-embedded human thyroid cancer tissue slide using KHC1216 (TRIM26 IHC Kit).



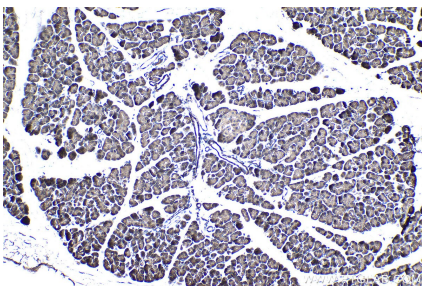
Immunohistochemical analysis of paraffin-embedded mouse colon tissue slide using KHC1216 (TRIM26 IHC Kit).



Immunohistochemical analysis of paraffin-embedded mouse pancreas tissue slide using KHC1216 (TRIM26 IHC Kit).



Immunohistochemical analysis of paraffin-embedded rat colon tissue slide using KHC1216 (TRIM26 IHC Kit).



Immunohistochemical analysis of paraffin-embedded rat pancreas tissue slide using KHC1216 (TRIM26 IHC Kit).