

IHC*easy* HSP47 Ready-To-Use IHC Kit

Catalog Number: **KHC1241**

General Information

Sample type:
FFPE tissue

Cited sample type:

Reactivity:
Human, Mouse, Rat

Cited Reactivity:

Assay type:
Immunohistochemistry

Primary antibody type:
Mouse Monoclonal

Secondary antibody type:
Polymer-HRP-Goat anti-Mouse

Kit Component

Component	Size	Concentration
Antigen Retrieval Buffer	100 mL	50×
Washing Buffer	100 mL ×2	20×
Blocking Buffer	5 mL	RTU
Primary Antibody	5 mL	RTU
Secondary Antibody	5 mL	RTU
Chromogen Component A	0.2 mL	RTU
Chromogen Component B	4 mL	RTU
Signal Enhancer	5 mL	RTU
Counter Staining Reagent	5 mL	RTU
Mounting Media	5 mL	RTU
Control Slide	1 slide (Optional)	FFPE
Datasheet	1 Copy	
Manual	1 Copy	

Storage Instructions

All the reagents are stored at 2-8°C. The kit is stable for 6 months from the date of receipt.

Background

HSP47 is also named as Serpin H1, colligen, CBP1, CBP2, HSP47, SERPINH2 and belongs to the serpin family. This gene encodes a member of the serpin superfamily of serine proteinase inhibitors. The encoded protein is localized to the endoplasmic reticulum. It binds specifically to collagen and can be involved as a chaperone in the biosynthetic pathway of collagen. Autoantibodies to the encoded protein have been found in patients with rheumatoid arthritis.

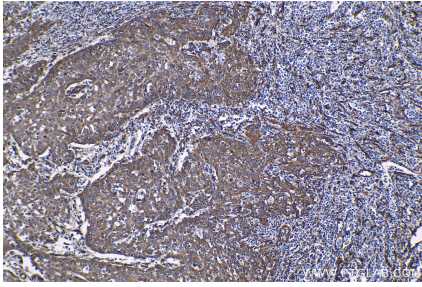
Synonyms

47 kDa heat shock protein, AsTP3, CBP1, CBP2, Collagen binding protein, Colligin, gp46, HSP47, PIG14, PPRM, RA A47, Serpin H1, SERPINH1, SERPINH2

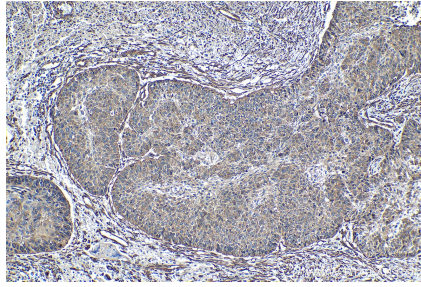
For technical support and original validation data for this product please contact:
T: 1 (888) 4PTGLAB (1-888-478-4522) (toll free in USA), or 1(312) 455-8498 (outside USA)
E: proteintech@ptglab.com
W: ptglab.com

This product is exclusively available under Proteintech Group brand and is not available to purchase from any other manufacturer.

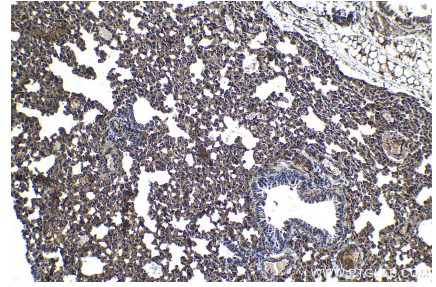
Selected Validation Data



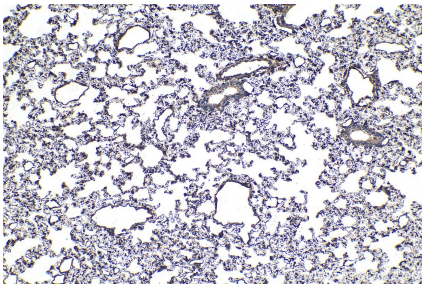
Immunohistochemical analysis of paraffin-embedded human cervical cancer tissue slide using KHC1241 (HSP47 IHC Kit).



Immunohistochemical analysis of paraffin-embedded human lung cancer tissue slide using KHC1241 (HSP47 IHC Kit).



Immunohistochemical analysis of paraffin-embedded mouse lung tissue slide using KHC1241 (HSP47 IHC Kit).



Immunohistochemical analysis of paraffin-embedded rat lung tissue slide using KHC1241 (HSP47 IHC Kit).