

IHC*easy* SH3GLB2 Ready-To-Use IHC Kit

Catalog Number: **KHC1260**

General Information

Sample type:
FFPE tissue

Cited sample type:

Reactivity:
Human, Mouse, Rat

Cited Reactivity:

Assay type:
Immunohistochemistry

Primary antibody type:
Rabbit Polyclonal

Secondary antibody type:
Polymer-HRP-Goat anti-Rabbit

Kit Component

Component	Size	Concentration
Antigen Retrieval Buffer	100 mL	50×
Washing Buffer	100 mL ×2	20×
Blocking Buffer	5 mL	RTU
Primary Antibody	5 mL	RTU
Secondary Antibody	5 mL	RTU
Chromogen Component A	0.2 mL	RTU
Chromogen Component B	4 mL	RTU
Signal Enhancer	5 mL	RTU
Counter Staining Reagent	5 mL	RTU
Mounting Media	5 mL	RTU
Control Slide	1 slide (Optional)	FFPE
Datasheet	1 Copy	
Manual	1 Copy	

Storage Instructions

All the reagents are stored at 2-8°C. The kit is stable for 6 months from the date of receipt.

Background

SH3GLB2 is an endophilin-related protein family with 395-amino acid protein and contains an N-terminal domain, a central coiled-coil region, and a C-terminal SH3 domain. SH3GLB2 is expressed in many tissues, including skeletal muscle, adipocytes, brain, lung, colon, and mammary gland. SH3GLB2 was expressed in the cytoplasm of transfected HeLa cells and was excluded from nuclei.

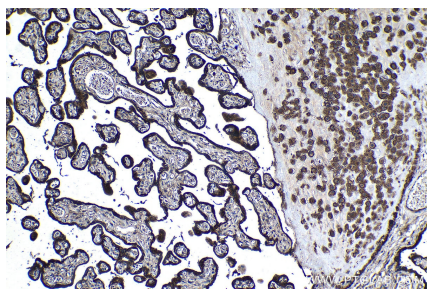
Synonyms

Endophilin B2, KIAA1848, PP6569, PP9455, SH3GLB2

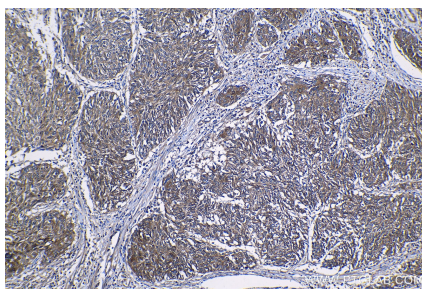
For technical support and original validation data for this product please contact:
T: 1 (888) 4PTGLAB (1-888-478-4522) (toll free in USA), or 1(312) 455-8498 (outside USA)
E: proteintech@ptglab.com
W: ptglab.com

This product is exclusively available under Proteintech Group brand and is not available to purchase from any other manufacturer.

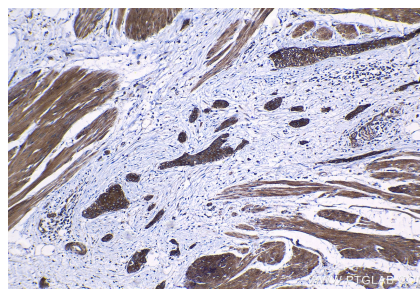
Selected Validation Data



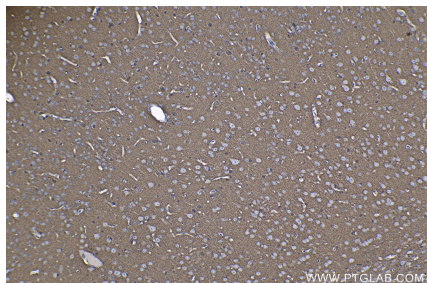
Immunohistochemical analysis of paraffin-embedded human placenta tissue slide using KHC1260 (SH3GLB2 IHC Kit).



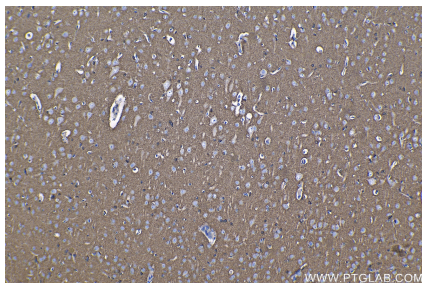
Immunohistochemical analysis of paraffin-embedded human cervical cancer tissue slide using KHC1260 (SH3GLB2 IHC Kit).



Immunohistochemical analysis of paraffin-embedded human urothelial carcinoma tissue slide using KHC1260 (SH3GLB2 IHC Kit).



Immunohistochemical analysis of paraffin-embedded mouse brain tissue slide using KHC1260 (SH3GLB2 IHC Kit).



Immunohistochemical analysis of paraffin-embedded rat brain tissue slide using KHC1260 (SH3GLB2 IHC Kit).