

IHC*easy* JMY Ready-To-Use IHC Kit

Catalog Number: **KHC1267**

General Information

Sample type:
FFPE tissue

Cited sample type:

Reactivity:
Human, Mouse, Rat

Cited Reactivity:

Assay type:
Immunohistochemistry

Primary antibody type:
Rabbit Polyclonal

Secondary antibody type:
Polymer-HRP-Goat anti-Rabbit

Kit Component

Component	Size	Concentration
Antigen Retrieval Buffer	100 mL	50×
Washing Buffer	100 mL ×2	20×
Blocking Buffer	5 mL	RTU
Primary Antibody	5 mL	RTU
Secondary Antibody	5 mL	RTU
Chromogen Component A	0.2 mL	RTU
Chromogen Component B	4 mL	RTU
Signal Enhancer	5 mL	RTU
Counter Staining Reagent	5 mL	RTU
Mounting Media	5 mL	RTU
Control Slide	1 slide (Optional)	FFPE
Datasheet	1 Copy	
Manual	1 Copy	

Storage Instructions

All the reagents are stored at 2-8°C. The kit is stable for 6 months from the date of receipt.

Background

Junction mediating and regulatory protein(JMY) is a 988 amino acid protein, which contains one WH2 domain and belongs to the JMY family. In nucleus, JMY acts both a nuclear p53/TP53-cofactor and a cytoplasmic regulator of actin dynamics in response to cellular stress. In cytoplasm, JMY acts as a nucleation-promoting factor for both branched and unbranched actin filaments. Due to alternative splicing, several isoforms of JMY are produced, and these various isoforms have different influencing effects on p53 activation, with some isoforms markedly enhancing p53 responses compared to the other splicing variants.

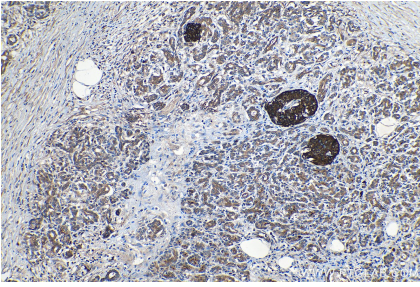
Synonyms

JMY, WHDC1L3

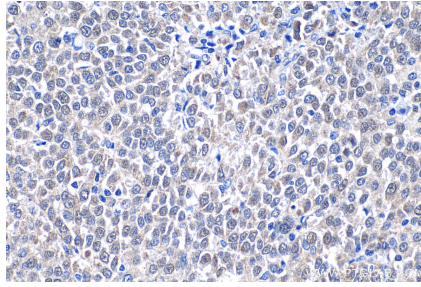
For technical support and original validation data for this product please contact:
T: 1 (888) 4PTGLAB (1-888-478-4522) (toll free in USA), or 1(312) 455-8498 (outside USA)
E: proteintech@ptglab.com
W: ptglab.com

This product is exclusively available under Proteintech Group brand and is not available to purchase from any other manufacturer.

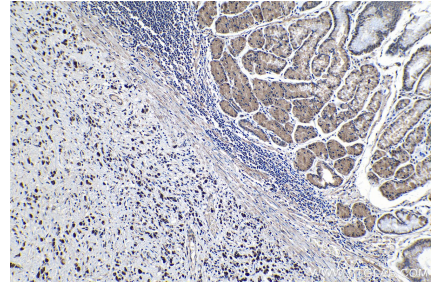
Selected Validation Data



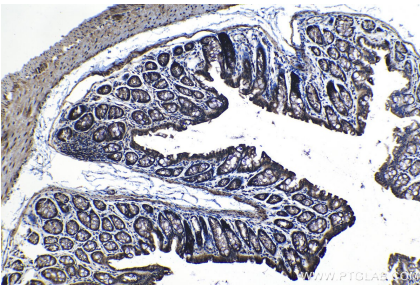
Immunohistochemical analysis of paraffin-embedded human pancreas cancer tissue slide using KHC1267 (JMY IHC Kit).



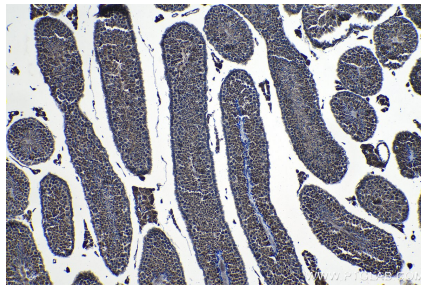
Immunohistochemical analysis of paraffin-embedded human ovary tumor tissue slide using KHC1267 (JMY IHC Kit).



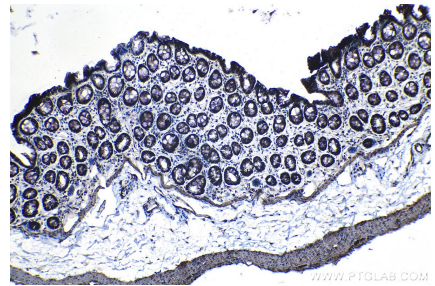
Immunohistochemical analysis of paraffin-embedded human stomach cancer tissue slide using KHC1267 (JMY IHC Kit).



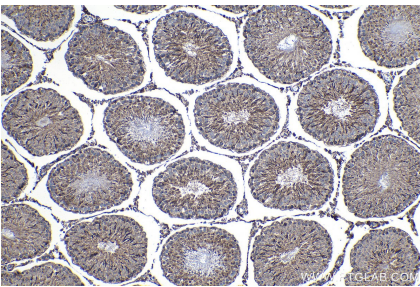
Immunohistochemical analysis of paraffin-embedded mouse colon tissue slide using KHC1267 (JMY IHC Kit).



Immunohistochemical analysis of paraffin-embedded mouse testis tissue slide using KHC1267 (JMY IHC Kit).



Immunohistochemical analysis of paraffin-embedded rat colon tissue slide using KHC1267 (JMY IHC Kit).



Immunohistochemical analysis of paraffin-embedded rat testis tissue slide using KHC1267 (JMY IHC Kit).