

IHC*easy* WNK1 Ready-To-Use IHC Kit

Catalog Number: **KHC1294**

General Information

Sample type:
FFPE tissue

Cited sample type:

Reactivity:
Human, Mouse

Cited Reactivity:

Assay type:
Immunohistochemistry

Primary antibody type:
Rabbit Polyclonal

Secondary antibody type:
Polymer-HRP-Goat anti-Rabbit

Kit Component

Component	Size	Concentration
Antigen Retrieval Buffer	100 mL	50×
Washing Buffer	100 mL × 2	20×
Blocking Buffer	5 mL	RTU
Primary Antibody	5 mL	RTU
Secondary Antibody	5 mL	RTU
Chromogen Component A	0.2 mL	RTU
Chromogen Component B	4 mL	RTU
Signal Enhancer	5 mL	RTU
Counter Staining Reagent	5 mL	RTU
Mounting Media	5 mL	RTU
Control Slide	1 slide (Optional)	FFPE
Datasheet	1 Copy	
Manual	1 Copy	

Storage Instructions

All the reagents are stored at 2-8°C. The kit is stable for 6 months from the date of receipt.

Background

WNK kinase is a unique serine-threonine kinase in which the lysine (K) residue in the catalytic domain, that is found in the majority of kinases is not conserved. In mammals, there are four WNK kinase family members (WNK1-4). WNK1 has 6 isoforms, such as long form WNK1 (L-WNK1, strong expression in dorsal root ganglia and spinal cord); kidney-specific isoform (KS-WNK1, lacks a kinase domain). KS-WNK1 cannot phosphorylate substrates and instead interacts with and modulates the actions of other WNKs via a carboxyl terminal HQ domain.

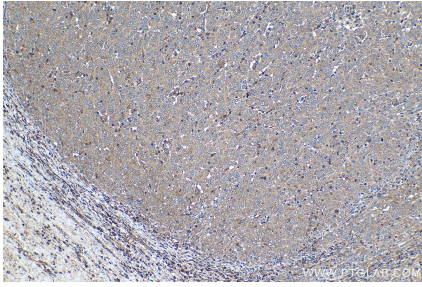
Synonyms

Erythrocyte 65 kDa protein, HSN2, HSN2, hWNK1, KDP, KIAA0344, Kinase deficient protein, p65, PHA2C, PRKWNK1, PSK, WNK1

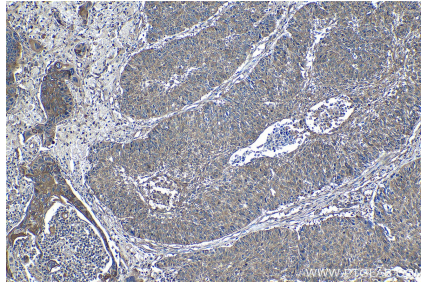
For technical support and original validation data for this product please contact:
T: 1 (888) 4PTGLAB (1-888-478-4522) (toll free in USA), or 1(312) 455-8498 (outside USA)
E: proteintech@ptglab.com
W: ptglab.com

This product is exclusively available under Proteintech Group brand and is not available to purchase from any other manufacturer.

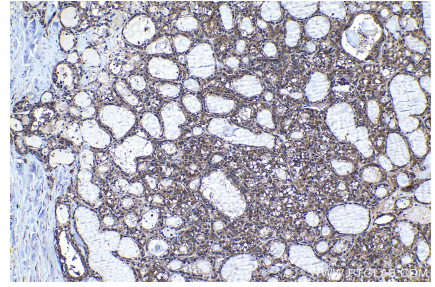
Selected Validation Data



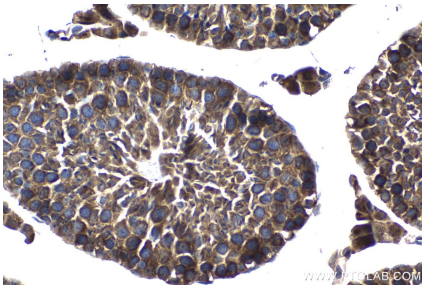
Immunohistochemical analysis of paraffin-embedded human ovary tumor tissue slide using KHC1294 (WNK1 IHC Kit).



Immunohistochemical analysis of paraffin-embedded human lung cancer tissue slide using KHC1294 (WNK1 IHC Kit).



Immunohistochemical analysis of paraffin-embedded human thyroid cancer tissue slide using KHC1294 (WNK1 IHC Kit).



Immunohistochemical analysis of paraffin-embedded mouse testis tissue slide using KHC1294 (WNK1 IHC Kit).