

IHC*easy* CLDN7 Ready-To-Use IHC Kit

Catalog Number: **KHC1318**

General Information

Sample type:
FFPE tissue

Cited sample type:

Reactivity:
Human, Mouse, Rat

Cited Reactivity:

Assay type:
Immunohistochemistry

Primary antibody type:
Rabbit Polyclonal

Secondary antibody type:
Polymer-HRP-Goat anti-Rabbit

Kit Component

Component	Size	Concentration
Antigen Retrieval Buffer	100 mL	50×
Washing Buffer	100 mL ×2	20×
Blocking Buffer	5 mL	RTU
Primary Antibody	5 mL	RTU
Secondary Antibody	5 mL	RTU
Chromogen Component A	0.2 mL	RTU
Chromogen Component B	4 mL	RTU
Signal Enhancer	5 mL	RTU
Counter Staining Reagent	5 mL	RTU
Mounting Media	5 mL	RTU
Control Slide	1 slide (Optional)	FFPE
Datasheet	1 Copy	
Manual	1 Copy	

Storage Instructions

All the reagents are stored at 2-8°C. The kit is stable for 6 months from the date of receipt.

Background

Claudins are a family of proteins that are the most important components of the tight junctions, where they establish the paracellular barrier that controls the flow of molecules in the intercellular space between the cells of an epithelium. 27 claudins have been identified. They are small proteins with very similar structure. They have four transmembrane domains, with the N-terminus and the C-terminus in the cytoplasm.

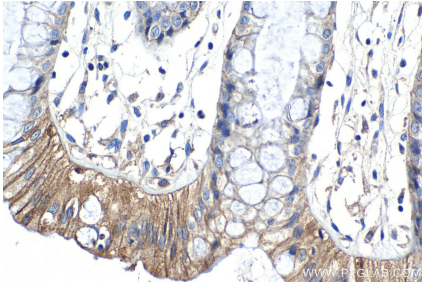
Synonyms

CEPTRL2, Claudin 7, CLDN 7, CLDN7, CPETRL2, Hs.84359

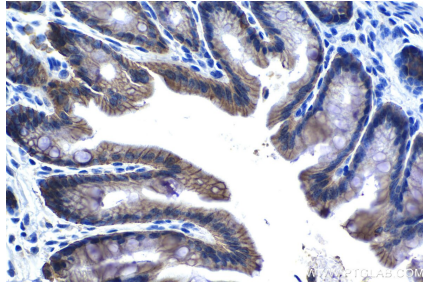
For technical support and original validation data for this product please contact:
T: 1 (888) 4PTGLAB (1-888-478-4522) (toll free in USA), or 1(312) 455-8498 (outside USA)
E: proteintech@ptglab.com
W: ptglab.com

This product is exclusively available under Proteintech Group brand and is not available to purchase from any other manufacturer.

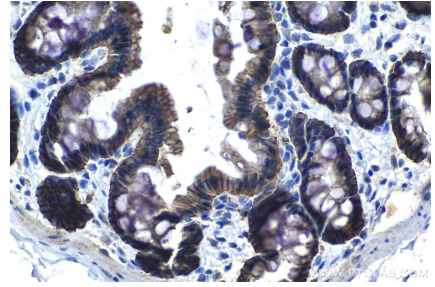
Selected Validation Data



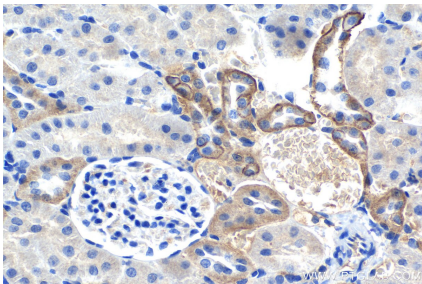
Immunohistochemical analysis of paraffin-embedded human colon tissue slide using KHC1318 (CLDN7 IHC Kit).



Immunohistochemical analysis of paraffin-embedded mouse colon tissue slide using KHC1318 (CLDN7 IHC Kit).



Immunohistochemical analysis of paraffin-embedded rat colon tissue slide using KHC1318 (CLDN7 IHC Kit).



Immunohistochemical analysis of paraffin-embedded rat kidney tissue slide using KHC1318 (CLDN7 IHC Kit).