

IHC*easy* PNLIP Ready-To-Use IHC Kit

Catalog Number: **KHC1332**

General Information

Sample type:
FFPE tissue

Cited sample type:

Reactivity:
Human, Mouse, Rat

Cited Reactivity:

Assay type:
Immunohistochemistry

Primary antibody type:
Rabbit Polyclonal

Secondary antibody type:
Polymer-HRP-Goat anti-Rabbit

Kit Component

Component	Size	Concentration
Antigen Retrieval Buffer	100 mL	50×
Washing Buffer	100 mL ×2	20×
Blocking Buffer	5 mL	RTU
Primary Antibody	5 mL	RTU
Secondary Antibody	5 mL	RTU
Chromogen Component A	0.2 mL	RTU
Chromogen Component B	4 mL	RTU
Signal Enhancer	5 mL	RTU
Counter Staining Reagent	5 mL	RTU
Mounting Media	5 mL	RTU
Control Slide	1 slide (Optional)	FFPE
Datasheet	1 Copy	
Manual	1 Copy	

Storage Instructions

All the reagents are stored at 2-8°C. The kit is stable for 6 months from the date of receipt.

Background

The pancreatic triacylglycerol lipase precursor (PNLIP), a 56 kDa protein secreted by the pancreas that is essential for the hydrolysis and absorption of long-chain triglyceride fatty acids in the intestine is located ~1 Mb upstream from the chromosome 10 pea. It is also named as PL, PTL and belongs to the AB hydrolase superfamily. It may potentially be involved in the pathophysiology of traumatic brain injury and may be implicated in the proliferation of astrocytes and the recovery of neurological outcomes. The full length protein has a signal peptide with 16 amino acid and a glycosylation site.

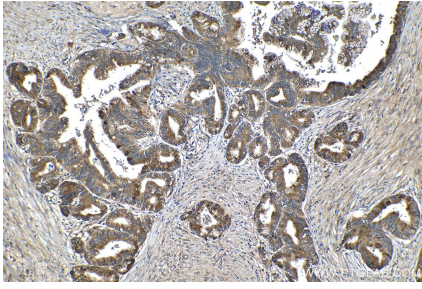
Synonyms

Lipase, Pancreatic Lipase, PL, PNLIP, PTL

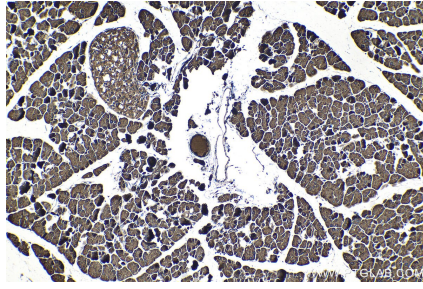
For technical support and original validation data for this product please contact:
T: 1 (888) 4PTGLAB (1-888-478-4522) (toll free in USA), or 1(312) 455-8498 (outside USA)
E: proteintech@ptglab.com
W: ptglab.com

This product is exclusively available under Proteintech Group brand and is not available to purchase from any other manufacturer.

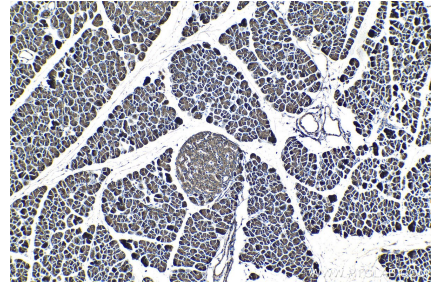
Selected Validation Data



Immunohistochemical analysis of paraffin-embedded human pancreas cancer tissue slide using KHC1332 (PNLIP IHC Kit).



Immunohistochemical analysis of paraffin-embedded mouse pancreas tissue slide using KHC1332 (PNLIP IHC Kit).



Immunohistochemical analysis of paraffin-embedded rat pancreas tissue slide using KHC1332 (PNLIP IHC Kit).