

IHC*easy* MRPL49 Ready-To-Use IHC Kit

Catalog Number: **KHC1365**

General Information

Sample type:
FFPE tissue

Cited sample type:

Reactivity:
Human, Mouse, Rat

Cited Reactivity:

Assay type:
Immunohistochemistry

Primary antibody type:
Rabbit Polyclonal

Secondary antibody type:
Polymer-HRP-Goat anti-Rabbit

Kit Component

Component	Size	Concentration
Antigen Retrieval Buffer	100 mL	50×
Washing Buffer	100 mL ×2	20×
Blocking Buffer	5 mL	RTU
Primary Antibody	5 mL	RTU
Secondary Antibody	5 mL	RTU
Chromogen Component A	0.2 mL	RTU
Chromogen Component B	4 mL	RTU
Signal Enhancer	5 mL	RTU
Counter Staining Reagent	5 mL	RTU
Mounting Media	5 mL	RTU
Control Slide	1 slide (Optional)	FFPE
Datasheet	1 Copy	
Manual	1 Copy	

Storage Instructions

All the reagents are stored at 2-8°C. The kit is stable for 6 months from the date of receipt.

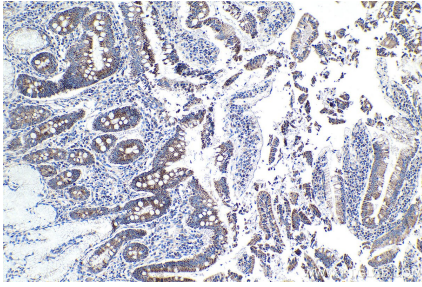
Background

MRPL49, also named as C11orf4, NOF1, or SW-cl.67, is a 166 amino acid protein, which belongs to the ribosomal protein L49em family. MRPL49 localizes in the Mitochondrion and is widely expressed in various tissues. MRPL49 is a regulator of C3 convertase of classical pathway.

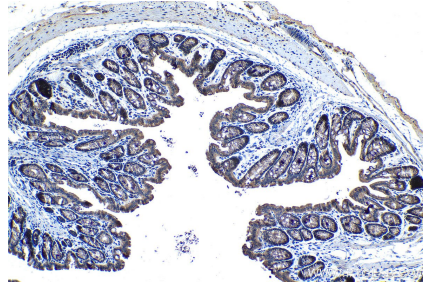
Synonyms

C11orf4, L49mt, MRP L49, MRPL49, Neighbor of FAU, NOF, NOF1, Protein NOF1

Selected Validation Data



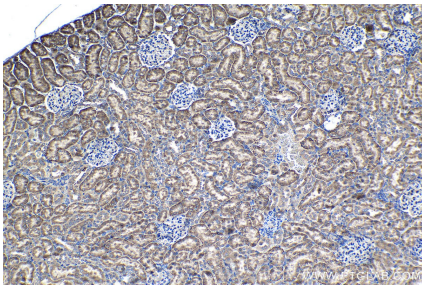
Immunohistochemical analysis of paraffin-embedded human stomach cancer tissue slide using KHC1365 (MRPL49 IHC Kit).



Immunohistochemical analysis of paraffin-embedded mouse colon tissue slide using KHC1365 (MRPL49 IHC Kit).



Immunohistochemical analysis of paraffin-embedded rat colon tissue slide using KHC1365 (MRPL49 IHC Kit).



Immunohistochemical analysis of paraffin-embedded rat kidney tissue slide using KHC1365 (MRPL49 IHC Kit).