

IHC*easy* PITRM1 Ready-To-Use IHC Kit

Catalog Number: **KHC1370**

General Information

Sample type:
FFPE tissue

Cited sample type:

Reactivity:
Human, Mouse

Cited Reactivity:

Assay type:
Immunohistochemistry

Primary antibody type:
Rabbit Polyclonal

Secondary antibody type:
Polymer-HRP-Goat anti-Rabbit

Kit Component

Component	Size	Concentration
Antigen Retrieval Buffer	100 mL	50×
Washing Buffer	100 mL ×2	20×
Blocking Buffer	5 mL	RTU
Primary Antibody	5 mL	RTU
Secondary Antibody	5 mL	RTU
Chromogen Component A	0.2 mL	RTU
Chromogen Component B	4 mL	RTU
Signal Enhancer	5 mL	RTU
Counter Staining Reagent	5 mL	RTU
Mounting Media	5 mL	RTU
Control Slide	1 slide (Optional)	FFPE
Datasheet	1 Copy	
Manual	1 Copy	

Storage Instructions

All the reagents are stored at 2-8°C. The kit is stable for 6 months from the date of receipt.

Background

PITRM1 (Presequence protease, mitochondrial) is a ATP-independent protease that degrades mitochondrial transit peptides after their cleavage. It is specific for peptides in the range of 10 to 65 residues, and able to degrade amyloid beta A4 (Aβ) protein when it accumulates in mitochondrion, suggesting a link with Alzheimer disease. It shows a preference for cleavage after small polar residues and before basic residues, but without any positional preference.

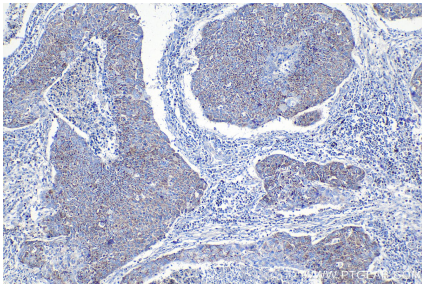
Synonyms

hMP1, hPreP, KIAA1104, Metalloprotease 1, MP1, pitrilysin metallopeptidase 1, Pitrilysin metalloproteinase 1, PITRM1, PreP

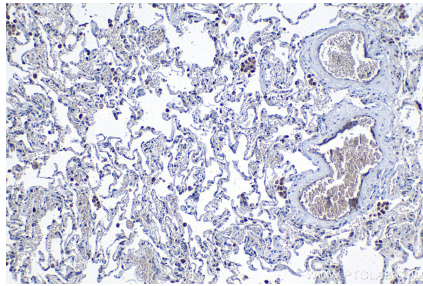
For technical support and original validation data for this product please contact:
T: 1 (888) 4PTGLAB (1-888-478-4522) (toll free in USA), or 1(312) 455-8498 (outside USA)
E: proteintech@ptglab.com
W: ptglab.com

This product is exclusively available under Proteintech Group brand and is not available to purchase from any other manufacturer.

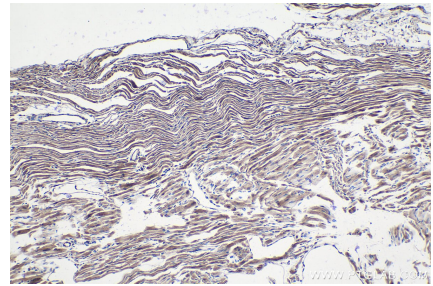
Selected Validation Data



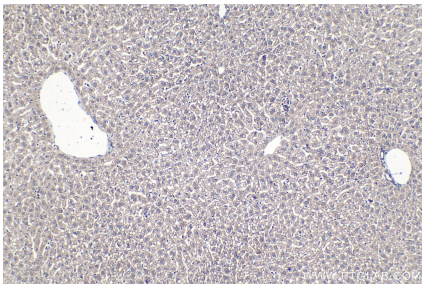
Immunohistochemical analysis of paraffin-embedded human lung cancer tissue slide using KHC1370 (PITRM1 IHC Kit).



Immunohistochemical analysis of paraffin-embedded human lung tissue slide using KHC1370 (PITRM1 IHC Kit).



Immunohistochemical analysis of paraffin-embedded mouse heart tissue slide using KHC1370 (PITRM1 IHC Kit).



Immunohistochemical analysis of paraffin-embedded mouse liver tissue slide using KHC1370 (PITRM1 IHC Kit).