

IHC*easy* CPSF6 Ready-To-Use IHC Kit

Catalog Number: **KHC1388**

General Information

Sample type:
FFPE tissue

Cited sample type:

Reactivity:
Human, Mouse, Rat

Cited Reactivity:

Assay type:
Immunohistochemistry

Primary antibody type:
Rabbit Polyclonal

Secondary antibody type:
Polymer-HRP-Goat anti-Rabbit

Kit Component

Component	Size	Concentration
Antigen Retrieval Buffer	100 mL	50×
Washing Buffer	100 mL × 2	20×
Blocking Buffer	5 mL	RTU
Primary Antibody	5 mL	RTU
Secondary Antibody	5 mL	RTU
Chromogen Component A	0.2 mL	RTU
Chromogen Component B	4 mL	RTU
Signal Enhancer	5 mL	RTU
Counter Staining Reagent	5 mL	RTU
Mounting Media	5 mL	RTU
Control Slide	1 slide (Optional)	FFPE
Datasheet	1 Copy	
Manual	1 Copy	

Storage Instructions

All the reagents are stored at 2-8°C. The kit is stable for 6 months from the date of receipt.

Background

The binding of Cleavage factor Im (CFIM), also known as CPSF6, to the pre-mRNA is one of the earliest steps in the assembly of the cleavage and polyadenylation machinery and facilitates the recruitment of other processing factors. CFIM is required for the first step in pre-mRNA 3'-end processing and can be reconstituted in vitro from its heterologously expressed 25- and 68-kDa subunits. It involved in RNA binding, protein-protein interactions, and subcellular localization. In addition, it is a pre-mRNA processing protein that dynamically shuttles between the nucleus and the cytoplasm and contains a C-terminal nuclear-targeting arginine/serine-rich (RS-) domain of the type bound by TNPO3.

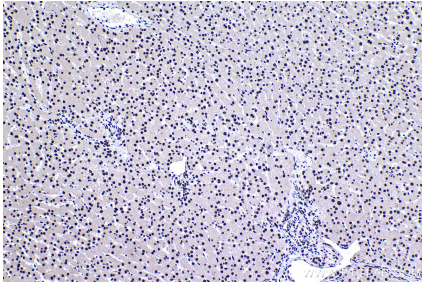
Synonyms

CFIM, CFIM68, CPSF 68 kDa subunit, CPSF6, HPBR11 4, HPBR11 7, Protein HPBR11 4/7

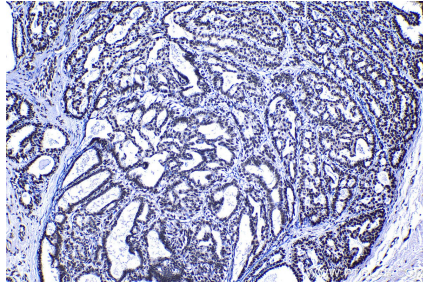
For technical support and original validation data for this product please contact:
T: 1 (888) 4PTGLAB (1-888-478-4522) (toll free in USA), or 1(312) 455-8498 (outside USA) E: proteintech@ptglab.com W: ptglab.com

This product is exclusively available under Proteintech Group brand and is not available to purchase from any other manufacturer.

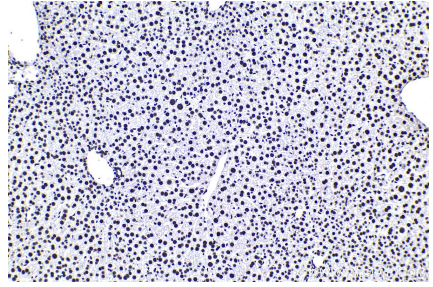
Selected Validation Data



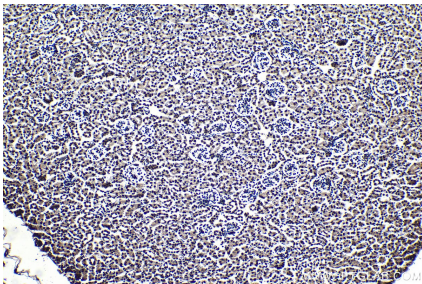
Immunohistochemical analysis of paraffin-embedded human liver tissue slide using KHC1388 (CPSF6 IHC Kit).



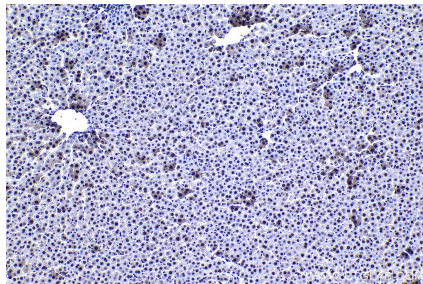
Immunohistochemical analysis of paraffin-embedded human breast cancer tissue slide using KHC1388 (CPSF6 IHC Kit).



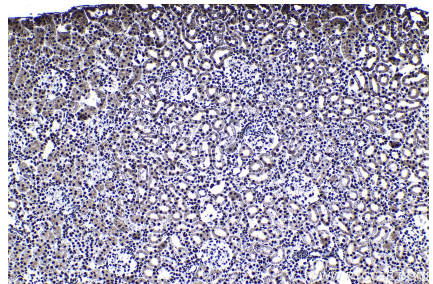
Immunohistochemical analysis of paraffin-embedded mouse liver tissue slide using KHC1388 (CPSF6 IHC Kit).



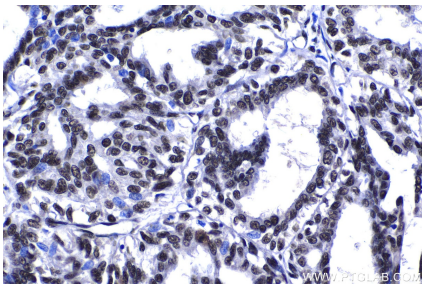
Immunohistochemical analysis of paraffin-embedded mouse kidney tissue slide using KHC1388 (CPSF6 IHC Kit).



Immunohistochemical analysis of paraffin-embedded rat liver tissue slide using KHC1388 (CPSF6 IHC Kit).



Immunohistochemical analysis of paraffin-embedded rat kidney tissue slide using KHC1388 (CPSF6 IHC Kit).



Immunohistochemical analysis of paraffin-embedded human breast cancer tissue slide using KHC1388 (CPSF6 IHC Kit).