

IHC*easy* LGALS9 Ready-To-Use IHC Kit

Catalog Number: **KHC1418**

General Information

Sample type:
FFPE tissue

Cited sample type:

Reactivity:
Human, Mouse, Rat

Cited Reactivity:

Assay type:
Immunohistochemistry

Primary antibody type:
Rabbit Polyclonal

Secondary antibody type:
Polymer-HRP-Goat anti-Rabbit

Kit Component

Component	Size	Concentration
Antigen Retrieval Buffer	100 mL	50×
Washing Buffer	100 mL ×2	20×
Blocking Buffer	5 mL	RTU
Primary Antibody	5 mL	RTU
Secondary Antibody	5 mL	RTU
Chromogen Component A	0.2 mL	RTU
Chromogen Component B	4 mL	RTU
Signal Enhancer	5 mL	RTU
Counter Staining Reagent	5 mL	RTU
Mounting Media	5 mL	RTU
Control Slide	1 slide (Optional)	FFPE
Datasheet	1 Copy	
Manual	1 Copy	

Storage Instructions

All the reagents are stored at 2-8°C. The kit is stable for 6 months from the date of receipt.

Background

The galectins, formerly known as S-type lectins, are a family of β -galactoside-binding proteins implicated in modulating cell-cell and cell-matrix interactions. Galectin-9 (LGALS9) is a tandem repeat-type member of the galectin family. Galectin-9 is ubiquitously expressed in a variety of tissues, including lymph nodes and spleen, and overexpressed in Hodgkin disease tissue. It is involved in chemoattraction, apoptosis, and the regulation of cell differentiation and has anti-allergic effects. It has been reported that galectin-9 is a ligand for Tim-3, through which galectin-9 can induce T-helper type 1 lymphocyte (Th1) death.

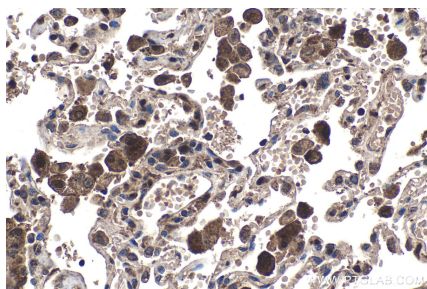
Synonyms

Ecalectin, Gal 9, Galectin 9, HUAT, LGALS9, LGALS9A, Tumor antigen HOM HD 21

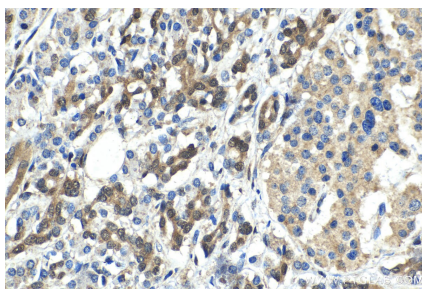
For technical support and original validation data for this product please contact:
T: 1 (888) 4PTGLAB (1-888-478-4522) (toll free in USA), or 1(312) 455-8498 (outside USA)
E: proteintech@ptglab.com
W: ptglab.com

This product is exclusively available under Proteintech Group brand and is not available to purchase from any other manufacturer.

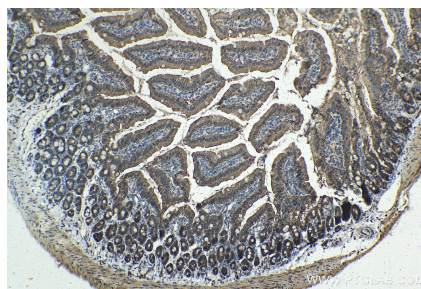
Selected Validation Data



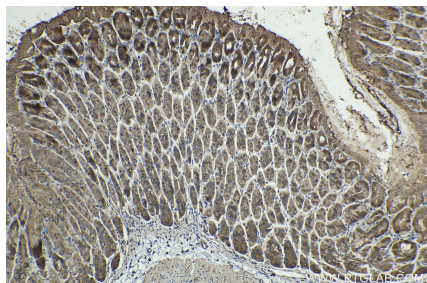
Immunohistochemical analysis of paraffin-embedded human lung tissue slide using KHC1418 (LGALS9 IHC Kit).



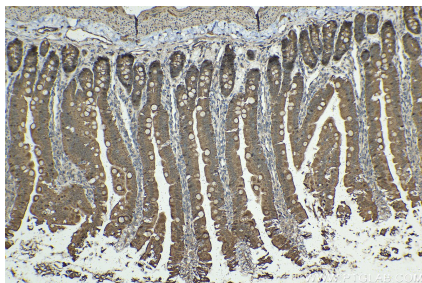
Immunohistochemical analysis of paraffin-embedded human pancreas cancer tissue slide using KHC1418 (LGALS9 IHC Kit).



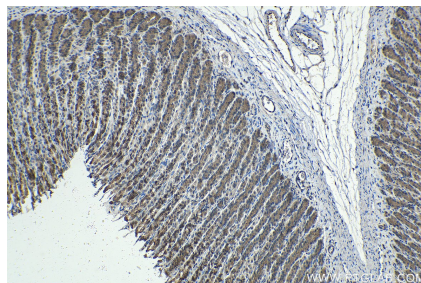
Immunohistochemical analysis of paraffin-embedded mouse small intestine tissue slide using KHC1418 (LGALS9 IHC Kit).



Immunohistochemical analysis of paraffin-embedded mouse stomach tissue slide using KHC1418 (LGALS9 IHC Kit).



Immunohistochemical analysis of paraffin-embedded rat small intestine tissue slide using KHC1418 (LGALS9 IHC Kit).



Immunohistochemical analysis of paraffin-embedded rat stomach tissue slide using KHC1418 (LGALS9 IHC Kit).