

IHC*easy* DDX3 Ready-To-Use IHC Kit

Catalog Number: **KHC1424**

General Information

Sample type:
FFPE tissue

Cited sample type:

Reactivity:
Human, Mouse, Rat

Cited Reactivity:

Assay type:
Immunohistochemistry

Primary antibody type:
Rabbit Polyclonal

Secondary antibody type:
Polymer-HRP-Goat anti-Rabbit

Kit Component

Component	Size	Concentration
Antigen Retrieval Buffer	100 mL	50×
Washing Buffer	100 mL × 2	20×
Blocking Buffer	5 mL	RTU
Primary Antibody	5 mL	RTU
Secondary Antibody	5 mL	RTU
Chromogen Component A	0.2 mL	RTU
Chromogen Component B	4 mL	RTU
Signal Enhancer	5 mL	RTU
Counter Staining Reagent	5 mL	RTU
Mounting Media	5 mL	RTU
Control Slide	1 slide (Optional)	FFPE
Datasheet	1 Copy	
Manual	1 Copy	

Storage Instructions

All the reagents are stored at 2-8°C. The kit is stable for 6 months from the date of receipt.

Background

DDX3X, also named as DBX, DDX3 and HLP2, belongs to the DEAD box helicase family and DDX3/DED1 subfamily. It is ATP-dependent RNA helicase. DDX3X acts as a cofactor for XPO1-mediated nuclear export of incompletely spliced HIV-1 Rev RNAs. It is also involved in HIV-1 replication. DDX3X interacts specifically with hepatitis C virus core protein resulting in a change in intracellular location. Primary antibody in this kit can bind both DDX3X and DDX3Y for the close sequences.

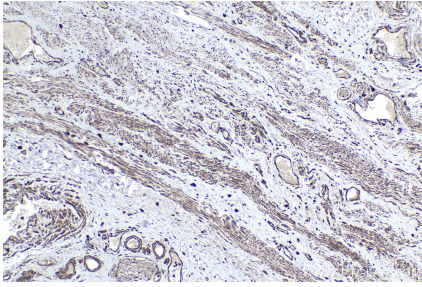
Synonyms

DBX, DDX14, DDX3, DDX3X, DEAD box, X isoform, Helicase like protein 2, HLP2

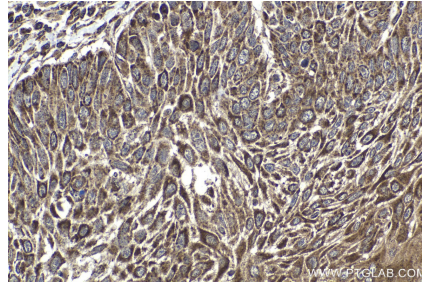
For technical support and original validation data for this product please contact:
T: 1 (888) 4PTGLAB (1-888-478-4522) (toll free in USA), or 1(312) 455-8498 (outside USA)
E: proteintech@ptglab.com
W: ptglab.com

This product is exclusively available under Proteintech Group brand and is not available to purchase from any other manufacturer.

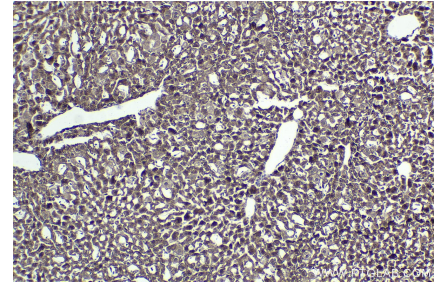
Selected Validation Data



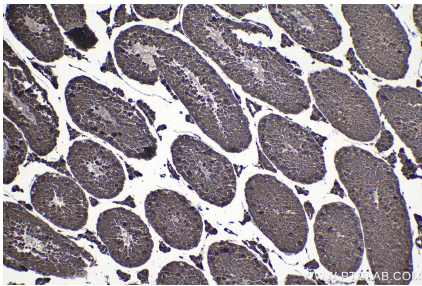
Immunohistochemical analysis of paraffin-embedded human cervical cancer tissue slide using KHC1424 (DDX3 IHC Kit).



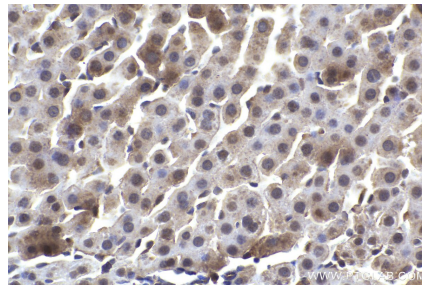
Immunohistochemical analysis of paraffin-embedded human oesophagus cancer tissue slide using KHC1424 (DDX3 IHC Kit).



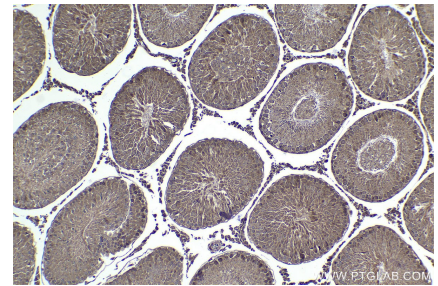
Immunohistochemical analysis of paraffin-embedded mouse liver tissue slide using KHC1424 (DDX3 IHC Kit).



Immunohistochemical analysis of paraffin-embedded mouse testis tissue slide using KHC1424 (DDX3 IHC Kit).



Immunohistochemical analysis of paraffin-embedded rat liver tissue slide using KHC1424 (DDX3 IHC Kit).



Immunohistochemical analysis of paraffin-embedded rat testis tissue slide using KHC1424 (DDX3 IHC Kit).