

IHC*easy* CASK Ready-To-Use IHC Kit

Catalog Number: **KHC1433**

General Information

Sample type:
FFPE tissue

Cited sample type:

Reactivity:
Human, Mouse, Rat

Cited Reactivity:

Assay type:
Immunohistochemistry

Primary antibody type:
Rabbit Polyclonal

Secondary antibody type:
Polymer-HRP-Goat anti-Rabbit

Kit Component

Component	Size	Concentration
Antigen Retrieval Buffer	100 mL	50×
Washing Buffer	100 mL × 2	20×
Blocking Buffer	5 mL	RTU
Primary Antibody	5 mL	RTU
Secondary Antibody	5 mL	RTU
Chromogen Component A	0.2 mL	RTU
Chromogen Component B	4 mL	RTU
Signal Enhancer	5 mL	RTU
Counter Staining Reagent	5 mL	RTU
Mounting Media	5 mL	RTU
Control Slide	1 slide (Optional)	FFPE
Datasheet	1 Copy	
Manual	1 Copy	

Storage Instructions

All the reagents are stored at 2-8°C. The kit is stable for 6 months from the date of receipt.

Background

CASK, also named as LIN2, belongs to the MAGUK family. It is a multidomain scaffolding protein with a role in synaptic transmembrane protein anchoring and ion channel trafficking. It contributes to neural development and regulation of gene expression via interaction with the transcription factor TRB1. CASK binds to cell-surface proteins, including amyloid precursor protein, neuexins and syndecans. It may mediate a link between the extracellular matrix and the actin cytoskeleton via its interaction with syndecan and with the actin/spectrin-binding protein 4.1. Defects in CASK are the cause of mental retardation X-linked CASK-related (MRXCASK). Defects in CASK are the cause of FG syndrome type 4 (FGS4).

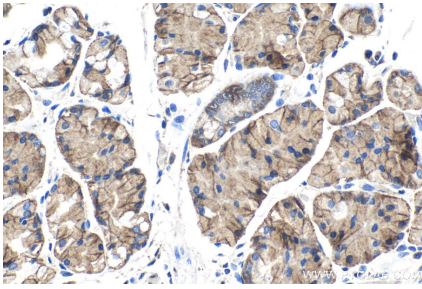
Synonyms

CAGH39, CASK, CMG, FGS4, hCASK, LIN2, MICPCH, Protein lin 2 homolog, TNRC8

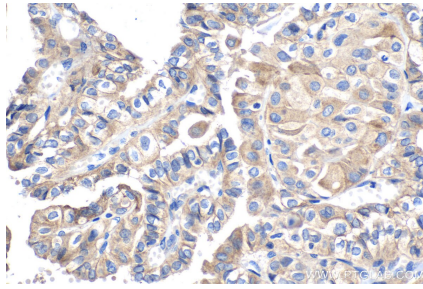
For technical support and original validation data for this product please contact:
T: 1 (888) 4PTGLAB (1-888-478-4522) (toll free in USA), or 1(312) 455-8498 (outside USA)
E: proteintech@ptglab.com
W: ptglab.com

This product is exclusively available under Proteintech Group brand and is not available to purchase from any other manufacturer.

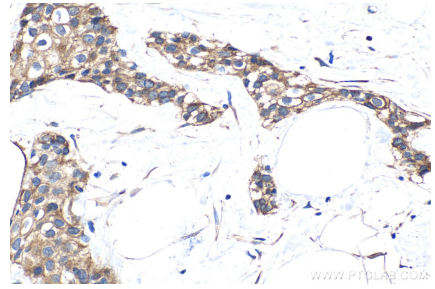
Selected Validation Data



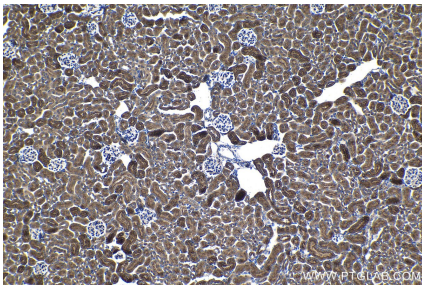
Immunohistochemical analysis of paraffin-embedded human stomach cancer tissue slide using KHC1433 (CASK IHC Kit).



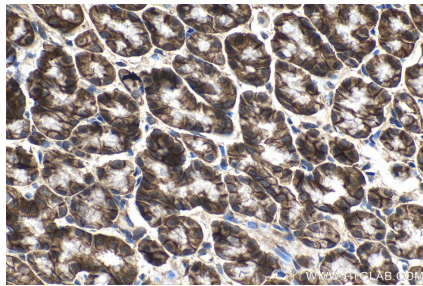
Immunohistochemical analysis of paraffin-embedded human thyroid cancer tissue slide using KHC1433 (CASK IHC Kit).



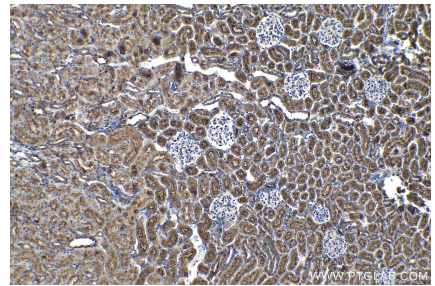
Immunohistochemical analysis of paraffin-embedded human urothelial carcinoma tissue slide using KHC1433 (CASK IHC Kit).



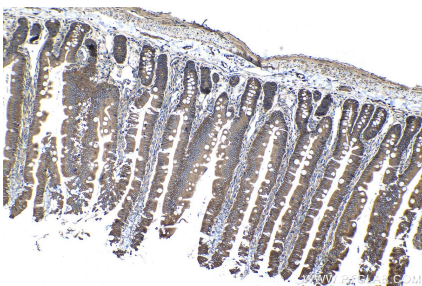
Immunohistochemical analysis of paraffin-embedded mouse kidney tissue slide using KHC1433 (CASK IHC Kit).



Immunohistochemical analysis of paraffin-embedded mouse small intestine tissue slide using KHC1433 (CASK IHC Kit).



Immunohistochemical analysis of paraffin-embedded rat kidney tissue slide using KHC1433 (CASK IHC Kit).



Immunohistochemical analysis of paraffin-embedded rat small intestine tissue slide using KHC1433 (CASK IHC Kit).