

IHC*easy* INPPL1 Ready-To-Use IHC Kit

Catalog Number: **KHC1444**

General Information

Sample type:
FFPE tissue

Cited sample type:

Reactivity:
Human, Mouse, Rat

Cited Reactivity:

Assay type:
Immunohistochemistry

Primary antibody type:
Rabbit Polyclonal

Secondary antibody type:
Polymer-HRP-Goat anti-Rabbit

Kit Component

Component	Size	Concentration
Antigen Retrieval Buffer	100 mL	50×
Washing Buffer	100 mL ×2	20×
Blocking Buffer	5 mL	RTU
Primary Antibody	5 mL	RTU
Secondary Antibody	5 mL	RTU
Chromogen Component A	0.2 mL	RTU
Chromogen Component B	4 mL	RTU
Signal Enhancer	5 mL	RTU
Counter Staining Reagent	5 mL	RTU
Mounting Media	5 mL	RTU
Control Slide	1 slide (Optional)	FFPE
Datasheet	1 Copy	
Manual	1 Copy	

Storage Instructions

All the reagents are stored at 2-8°C. The kit is stable for 6 months from the date of receipt.

Background

Inositol polyphosphate phosphatase-like protein 1 (INPPL1) belongs to the inositol and phosphatidylinositol 5-phosphatase family, also known as SH2 domain-containing inositol 5'-phosphatase 2 (SHIP2), is ubiquitous in all organizations. SHIP2 is constitutively tyrosine-phosphorylated in chronic myeloid leukemia progenitor cells. In B cells, SHIP2 was most tyrosine phosphorylated after BCR and FC-γriib crosslinking and was associated with Shc, but not after BCR stimulation alone. It has also been shown that SHIP2 can be phosphorylated at Tyr-986 in COS-7 cells and Chinese hamster ovary cells overexpressing the insulin receptor.

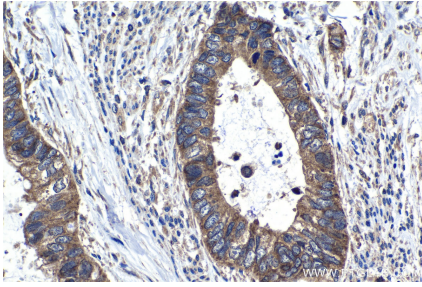
Synonyms

INPPL 1, INPPL1, Protein 51C, SHIP 2, SHIP2

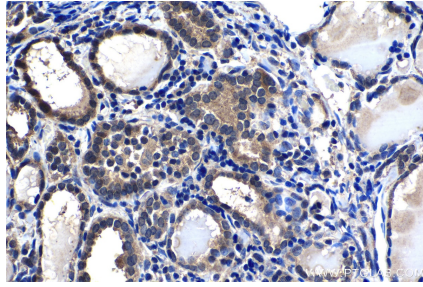
For technical support and original validation data for this product please contact:
T: 1 (888) 4PTGLAB (1-888-478-4522) (toll free in USA), or 1(312) 455-8498 (outside USA)
E: proteintech@ptglab.com
W: ptglab.com

This product is exclusively available under Proteintech Group brand and is not available to purchase from any other manufacturer.

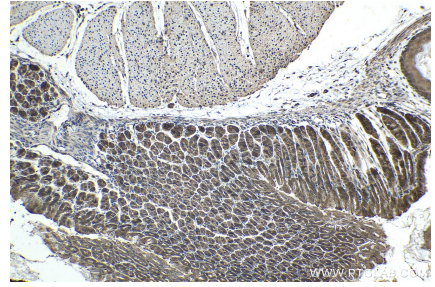
Selected Validation Data



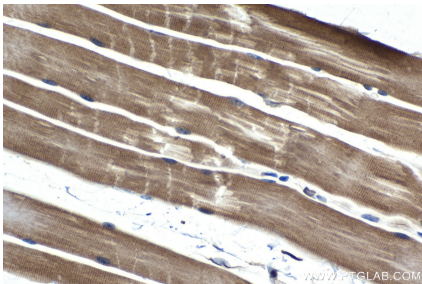
Immunohistochemical analysis of paraffin-embedded human urothelial carcinoma tissue slide using KHC1444 (INPPL1 IHC Kit).



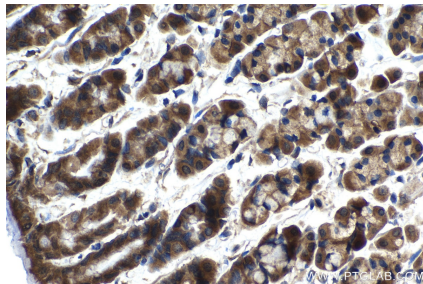
Immunohistochemical analysis of paraffin-embedded human thyroid cancer tissue slide using KHC1444 (INPPL1 IHC Kit).



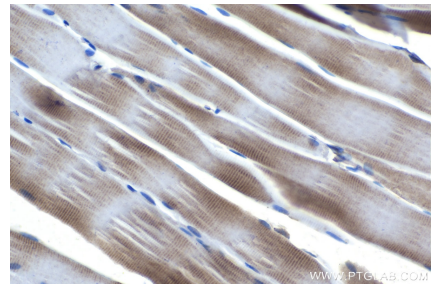
Immunohistochemical analysis of paraffin-embedded mouse stomach tissue slide using KHC1444 (INPPL1 IHC Kit).



Immunohistochemical analysis of paraffin-embedded mouse skeletal muscle tissue slide using KHC1444 (INPPL1 IHC Kit).



Immunohistochemical analysis of paraffin-embedded rat stomach tissue slide using KHC1444 (INPPL1 IHC Kit).



Immunohistochemical analysis of paraffin-embedded rat skeletal muscle tissue slide using KHC1444 (INPPL1 IHC Kit).