

IHC*easy* BNIP3L Ready-To-Use IHC Kit

Catalog Number: **KHC1460**

General Information

Sample type:
FFPE tissue
Cited sample type:
Reactivity:
Human
Cited Reactivity:

Assay type:
Immunohistochemistry
Primary antibody type:
Mouse Monoclonal
Secondary antibody type:
Polymer-HRP-Goat anti-Mouse

Kit Component

Component	Size	Concentration
Antigen Retrieval Buffer	100 mL	50×
Washing Buffer	100 mL ×2	20×
Blocking Buffer	5 mL	RTU
Primary Antibody	5 mL	RTU
Secondary Antibody	5 mL	RTU
Chromogen Component A	0.2 mL	RTU
Chromogen Component B	4 mL	RTU
Signal Enhancer	5 mL	RTU
Counter Staining Reagent	5 mL	RTU
Mounting Media	5 mL	RTU
Control Slide	1 slide (Optional)	FFPE
Datasheet	1 Copy	
Manual	1 Copy	

Storage Instructions

All the reagents are stored at 2-8°C. The kit is stable for 6 months from the date of receipt.

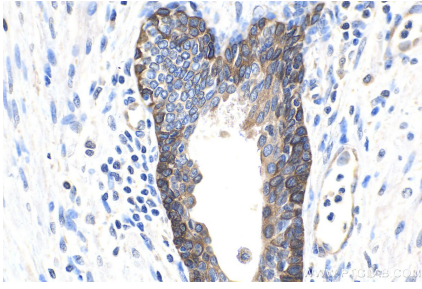
Background

BNIP3L, also named as BNIP3A, BNIP3H, NIX and NIP3L. Bnip3L is one of the BH3-containing pro-apoptotic proteins and that it targets the mitochondria when inducing apoptosis. It may function as a tumor suppressor.

Synonyms

BNIP3a, BNIP3H, BNIP3L, NIP3 like protein X, NIP3L, NIX

Selected Validation Data



Immunohistochemical analysis of paraffin-embedded human prostate cancer tissue slide using KHC1460 (BNIP3L IHC Kit).