

# IHC*easy* NUPR1 Ready-To-Use IHC Kit

Catalog Number: **KHC1466**

## General Information

**Sample type:**  
FFPE tissue

**Cited sample type:**

**Reactivity:**  
Human, Mouse, Rat

**Cited Reactivity:**

**Assay type:**  
Immunohistochemistry

**Primary antibody type:**  
Rabbit Polyclonal

**Secondary antibody type:**  
Polymer-HRP-Goat anti-Rabbit

## Kit Component

Component	Size	Concentration
Antigen Retrieval Buffer	100 mL	50×
Washing Buffer	100 mL ×2	20×
Blocking Buffer	5 mL	RTU
Primary Antibody	5 mL	RTU
Secondary Antibody	5 mL	RTU
Chromogen Component A	0.2 mL	RTU
Chromogen Component B	4 mL	RTU
Signal Enhancer	5 mL	RTU
Counter Staining Reagent	5 mL	RTU
Mounting Media	5 mL	RTU
Control Slide	1 slide (Optional)	FFPE
Datasheet	1 Copy	
Manual	1 Copy	

## Storage Instructions

All the reagents are stored at 2-8°C. The kit is stable for 6 months from the date of receipt.

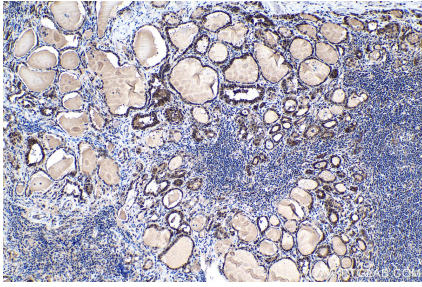
## Background

NUPR1, also named as COM1 and P8, is a small nuclear protein that is responsive to various stress stimuli. NUPR1 can be induced by hypoxia, oxidative stress, while the expression is low in physiological condition. It is associated with chemoresistance in multiple malignancies. NUPR1 was also found in a complex with ANXA2, TRIM21, YBX1, S100A9, HSPA8, HSPA9, HSPA4, HSPA5, and ESR1, suggesting that these proteins might play a role in its functional regulation, and it can also form a complex with PADI4 and plays crucial functions in modulating DNA-repair, favoring metastasis, or facilitating citrullination of other proteins.

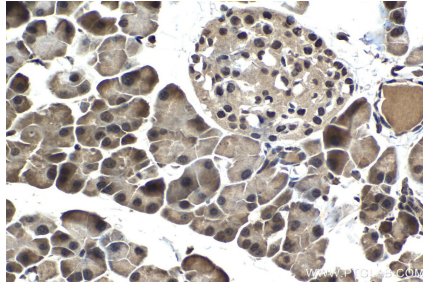
## Synonyms

Candidate of metastasis 1, COM1, nuclear protein 1, NUPR1, P8, Protein p8

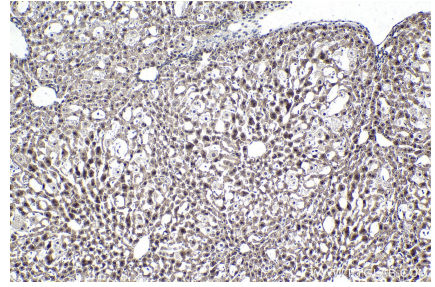
## Selected Validation Data



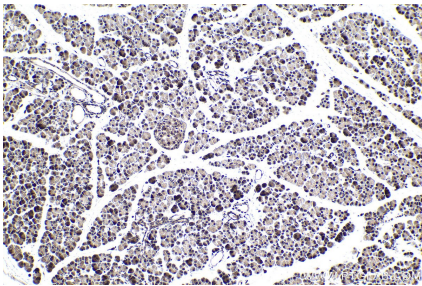
Immunohistochemical analysis of paraffin-embedded human thyroid cancer tissue slide using KHC1466 (NUPR1 IHC Kit).



Immunohistochemical analysis of paraffin-embedded mouse pancreas tissue slide using KHC1466 (NUPR1 IHC Kit).



Immunohistochemical analysis of paraffin-embedded mouse liver tissue slide using KHC1466 (NUPR1 IHC Kit).



Immunohistochemical analysis of paraffin-embedded rat pancreas tissue slide using KHC1466 (NUPR1 IHC Kit).