

IHC*easy* TADA3L Ready-To-Use IHC Kit

Catalog Number: **KHC1476**

General Information

Sample type:
FFPE tissue

Cited sample type:

Reactivity:
Human, Mouse, Rat

Cited Reactivity:

Assay type:
Immunohistochemistry

Primary antibody type:
Rabbit Polyclonal

Secondary antibody type:
Polymer-HRP-Goat anti-Rabbit

Kit Component

Component	Size	Concentration
Antigen Retrieval Buffer	100 mL	50×
Washing Buffer	100 mL ×2	20×
Blocking Buffer	5 mL	RTU
Primary Antibody	5 mL	RTU
Secondary Antibody	5 mL	RTU
Chromogen Component A	0.2 mL	RTU
Chromogen Component B	4 mL	RTU
Signal Enhancer	5 mL	RTU
Counter Staining Reagent	5 mL	RTU
Mounting Media	5 mL	RTU
Control Slide	1 slide (Optional)	FFPE
Datasheet	1 Copy	
Manual	1 Copy	

Storage Instructions

All the reagents are stored at 2-8°C. The kit is stable for 6 months from the date of receipt.

Background

TADA3 is a subunit of 2 histone acetyltransferase complexes: the ADA2A (TADA2A)-containing (ATAC) complex and the SPT3 (SUPT3H)-TAF9-GCN5 (KAT2A)/PCAF (KAT2B) acetylase (STAGA) complex. The ATAC complex is a complex with histone acetyltransferase activity on histones H3 and H4, and the PCAF complex is capable of efficiently acetylating histones in a nucleosomal context. TADA3 is also known as a coactivator for p53/TP53-dependent transcriptional activation.

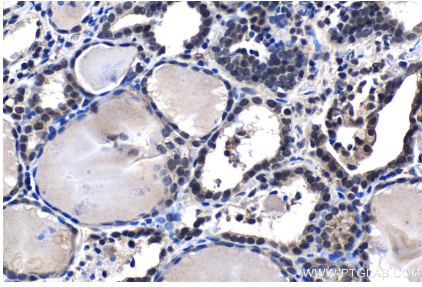
Synonyms

ADA3, ADA3 homolog, ADA3 like protein, hADA3, STAF54, TADA3, TADA3L, Transcriptional adapter 3, Transcriptional adapter 3 like

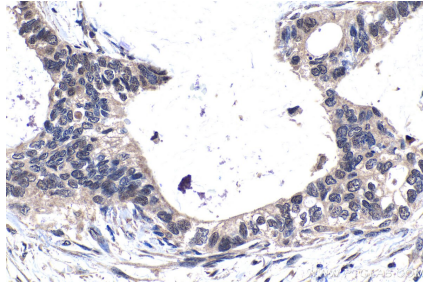
For technical support and original validation data for this product please contact:
T: 1 (888) 4PTGLAB (1-888-478-4522) (toll free in USA), or 1(312) 455-8498 (outside USA)
E: proteintech@ptglab.com
W: ptglab.com

This product is exclusively available under Proteintech Group brand and is not available to purchase from any other manufacturer.

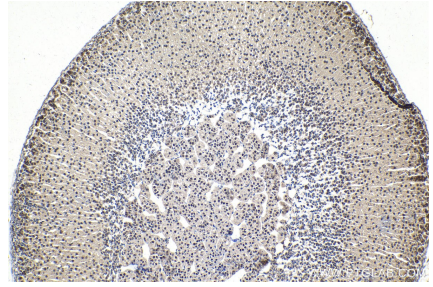
Selected Validation Data



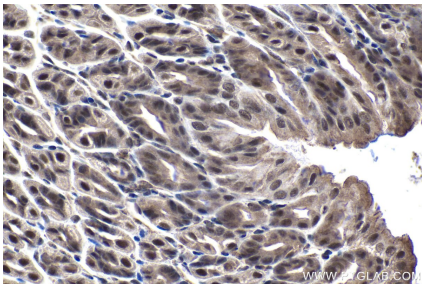
Immunohistochemical analysis of paraffin-embedded human thyroid cancer tissue slide using KHC1476 (TADA3L IHC Kit).



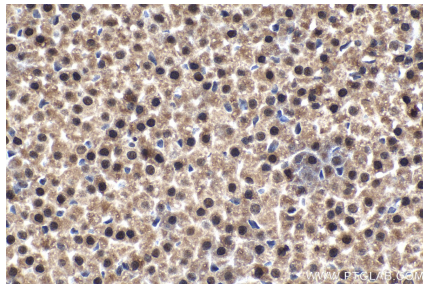
Immunohistochemical analysis of paraffin-embedded human urothelial carcinoma tissue slide using KHC1476 (TADA3L IHC Kit).



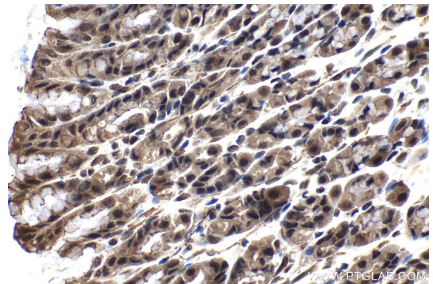
Immunohistochemical analysis of paraffin-embedded mouse adrenal gland tissue slide using KHC1476 (TADA3L IHC Kit).



Immunohistochemical analysis of paraffin-embedded mouse stomach tissue slide using KHC1476 (TADA3L IHC Kit).



Immunohistochemical analysis of paraffin-embedded rat adrenal gland tissue slide using KHC1476 (TADA3L IHC Kit).



Immunohistochemical analysis of paraffin-embedded rat stomach tissue slide using KHC1476 (TADA3L IHC Kit).