

IHC*easy* PHF14 Ready-To-Use IHC Kit

Catalog Number: **KHC1487**

General Information

Sample type:
FFPE tissue

Cited sample type:

Reactivity:
Human, Mouse, Rat

Cited Reactivity:

Assay type:
Immunohistochemistry

Primary antibody type:
Rabbit Polyclonal

Secondary antibody type:
Polymer-HRP-Goat anti-Rabbit

Kit Component

Component	Size	Concentration
Antigen Retrieval Buffer	100 mL	50×
Washing Buffer	100 mL ×2	20×
Blocking Buffer	5 mL	RTU
Primary Antibody	5 mL	RTU
Secondary Antibody	5 mL	RTU
Chromogen Component A	0.2 mL	RTU
Chromogen Component B	4 mL	RTU
Signal Enhancer	5 mL	RTU
Counter Staining Reagent	5 mL	RTU
Mounting Media	5 mL	RTU
Control Slide	1 slide (Optional)	FFPE
Datasheet	1 Copy	
Manual	1 Copy	

Storage Instructions

All the reagents are stored at 2-8°C. The kit is stable for 6 months from the date of receipt.

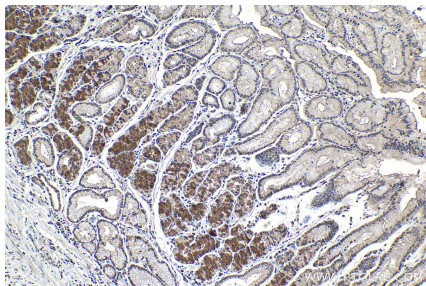
Background

PHF14 also named as KIAA0783 or PHD finger protein 14 is 888 amino acid protein, which contains 2 PHD-type zinc fingers. PHF14 localizes in nucleus and may be involved in the regulation of transcription, DNA dependent. The function of PHF14 is still non-known.

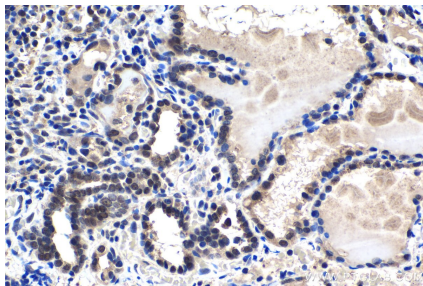
Synonyms

KIAA0783, PHD finger protein 14, PHF14

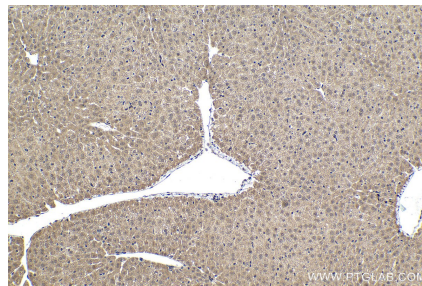
Selected Validation Data



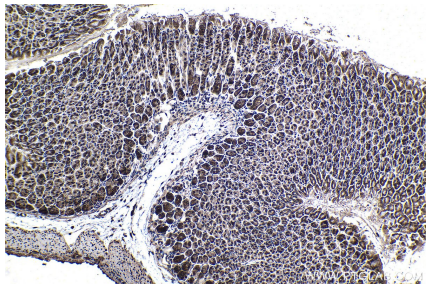
Immunohistochemical analysis of paraffin-embedded human stomach cancer tissue slide using KHC1487 (PHF14 IHC Kit).



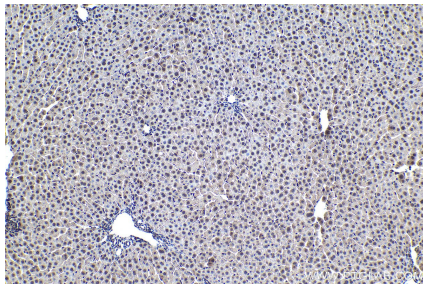
Immunohistochemical analysis of paraffin-embedded human thyroid cancer tissue slide using KHC1487 (PHF14 IHC Kit).



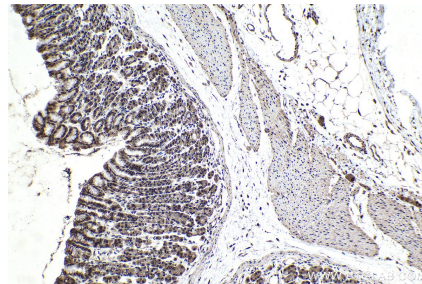
Immunohistochemical analysis of paraffin-embedded mouse liver tissue slide using KHC1487 (PHF14 IHC Kit).



Immunohistochemical analysis of paraffin-embedded mouse stomach tissue slide using KHC1487 (PHF14 IHC Kit).



Immunohistochemical analysis of paraffin-embedded rat liver tissue slide using KHC1487 (PHF14 IHC Kit).



Immunohistochemical analysis of paraffin-embedded rat stomach tissue slide using KHC1487 (PHF14 IHC Kit).