

# IHC*easy* ECD Ready-To-Use IHC Kit

Catalog Number: **KHC1501**

## General Information

**Sample type:**  
FFPE tissue

**Cited sample type:**

**Reactivity:**  
Human, Mouse, Rat

**Cited Reactivity:**

**Assay type:**  
Immunohistochemistry

**Primary antibody type:**  
Mouse Monoclonal

**Secondary antibody type:**  
Polymer-HRP-Goat anti-Mouse

## Kit Component

Component	Size	Concentration
Antigen Retrieval Buffer	100 mL	50×
Washing Buffer	100 mL ×2	20×
Blocking Buffer	5 mL	RTU
Primary Antibody	5 mL	RTU
Secondary Antibody	5 mL	RTU
Chromogen Component A	0.2 mL	RTU
Chromogen Component B	4 mL	RTU
Signal Enhancer	5 mL	RTU
Counter Staining Reagent	5 mL	RTU
Mounting Media	5 mL	RTU
Control Slide	1 slide (Optional)	FFPE
Datasheet	1 Copy	
Manual	1 Copy	

## Storage Instructions

All the reagents are stored at 2-8°C. The kit is stable for 6 months from the date of receipt.

## Background

The human suppressor of GCR two (hSGT1) was isolated by its ability to complement the growth defect of the *gcr2* mutant of *Saccharomyces cerevisiae*. Further work confirmed that the rescue of growth was associated with recovery of glycolytic enzyme activities of *gcr2*, and that hSGT1 did not complement the growth defect of a *gcr1* mutant. A hybrid protein comprising hSgt1p and the DNA-binding domain of Gal4p (GBD) activated a GAL1-lacZ reporter gene fusion, suggesting that the cloned gene may be a transcriptional activator. Two-hybrid experiments in yeast also indicate that hSgt1p interacts with Gcr1p. Northern analysis showed that hSGT1 is highly expressed in muscle and heart.

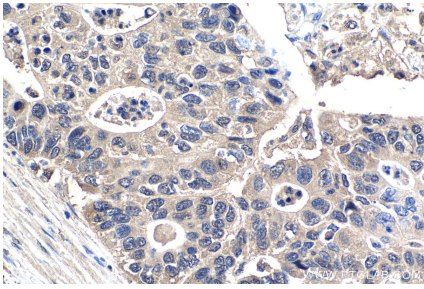
## Synonyms

ECD, GCR2, HSGT1, Protein ecdysoneless homolog, Protein SGT1, SGT1, Suppressor of GCR2

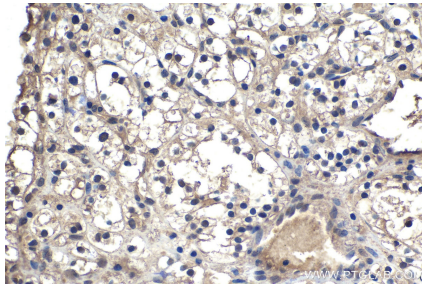
For technical support and original validation data for this product please contact:  
T: 1 (888) 4PTGLAB (1-888-478-4522) (toll free in USA), or 1(312) 455-8498 (outside USA)  
E: [proteintech@ptglab.com](mailto:proteintech@ptglab.com)  
W: [ptglab.com](http://ptglab.com)

This product is exclusively available under Proteintech Group brand and is not available to purchase from any other manufacturer.

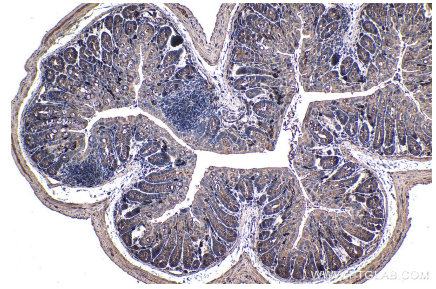
## Selected Validation Data



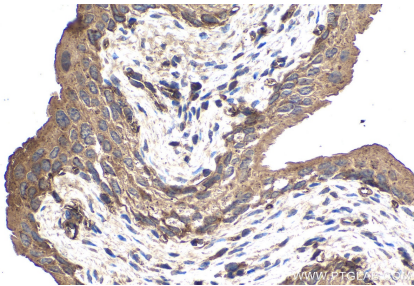
Immunohistochemical analysis of paraffin-embedded human stomach cancer tissue slide using KHC1501 (ECD IHC Kit).



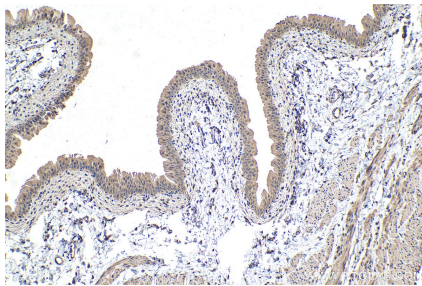
Immunohistochemical analysis of paraffin-embedded human renal cell carcinoma tissue slide using KHC1501 (ECD IHC Kit).



Immunohistochemical analysis of paraffin-embedded mouse colon tissue slide using KHC1501 (ECD IHC Kit).



Immunohistochemical analysis of paraffin-embedded mouse bladder tissue slide using KHC1501 (ECD IHC Kit).



Immunohistochemical analysis of paraffin-embedded rat bladder tissue slide using KHC1501 (ECD IHC Kit).