

# IHC*easy* ESRRA Ready-To-Use IHC Kit

Catalog Number: **KHC1525**

## General Information

**Sample type:**  
FFPE tissue

**Cited sample type:**

**Reactivity:**  
Human, Mouse, Rat

**Cited Reactivity:**

**Assay type:**  
Immunohistochemistry

**Primary antibody type:**  
Rabbit Polyclonal

**Secondary antibody type:**  
Polymer-HRP-Goat anti-Rabbit

## Kit Component

Component	Size	Concentration
Antigen Retrieval Buffer	100 mL	50×
Washing Buffer	100 mL ×2	20×
Blocking Buffer	5 mL	RTU
Primary Antibody	5 mL	RTU
Secondary Antibody	5 mL	RTU
Chromogen Component A	0.2 mL	RTU
Chromogen Component B	4 mL	RTU
Signal Enhancer	5 mL	RTU
Counter Staining Reagent	5 mL	RTU
Mounting Media	5 mL	RTU
Control Slide	1 slide (Optional)	FFPE
Datasheet	1 Copy	
Manual	1 Copy	

## Storage Instructions

All the reagents are stored at 2-8°C. The kit is stable for 6 months from the date of receipt.

## Background

ERRa, also named as ERR1, ESRL1, and NR3B1, is a 423 amino acid protein, which belongs to the nuclear hormone receptor family. NR3 subfamily. ERRa binds DNA as a monomer or a homodimer. ERRa binds to an ERR- $\alpha$  response element (ERRE) containing a single consensus half-site, 5'-TNAAGGTCA-3'. It can bind to the medium-chain acyl coenzyme A dehydrogenase (MCAD) response element NRRE-1 and may act as an important regulator of MCAD promoter. The ERR  $\alpha$ /PGC1 $\alpha$  complex is a regulator of energy metabolism.

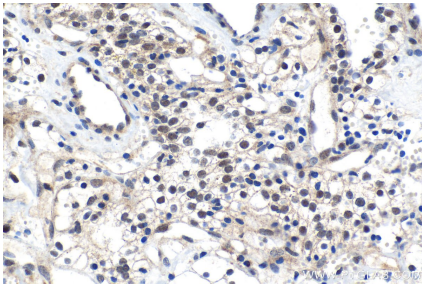
## Synonyms

ERR  $\alpha$ , ERR1, ERRa, ERR $\alpha$ , ESRL1, ESRRA, Estrogen receptor like 1, NR3B1, Steroid hormone receptor ERR1

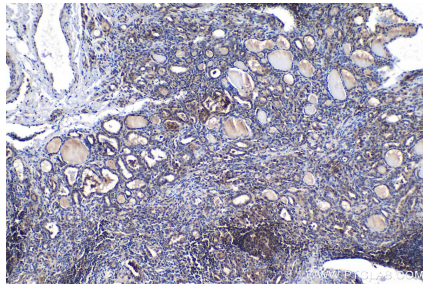
For technical support and original validation data for this product please contact:  
T: 1 (888) 4PTGLAB (1-888-478-4522) (toll free in USA), or 1(312) 455-8498 (outside USA)  
E: [proteintech@ptglab.com](mailto:proteintech@ptglab.com)  
W: [ptglab.com](http://ptglab.com)

This product is exclusively available under Proteintech Group brand and is not available to purchase from any other manufacturer.

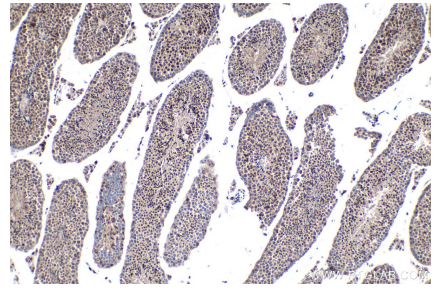
## Selected Validation Data



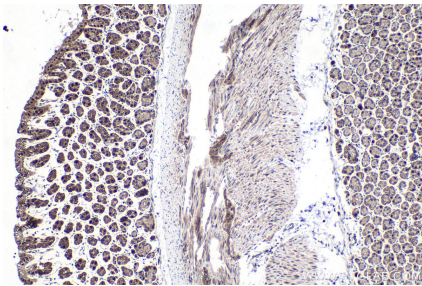
Immunohistochemical analysis of paraffin-embedded human renal cell carcinoma tissue slide using KHC1525 (ESRRA IHC Kit).



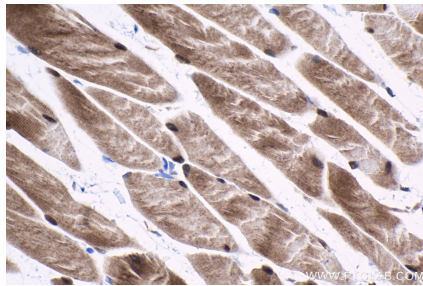
Immunohistochemical analysis of paraffin-embedded human thyroid cancer tissue slide using KHC1525 (ESRRA IHC Kit).



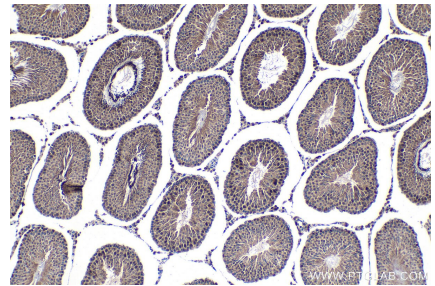
Immunohistochemical analysis of paraffin-embedded mouse testis tissue slide using KHC1525 (ESRRA IHC Kit).



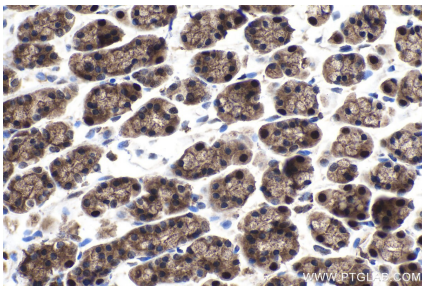
Immunohistochemical analysis of paraffin-embedded mouse stomach tissue slide using KHC1525 (ESRRA IHC Kit).



Immunohistochemical analysis of paraffin-embedded mouse skeletal muscle tissue slide using KHC1525 (ESRRA IHC Kit).



Immunohistochemical analysis of paraffin-embedded rat testis tissue slide using KHC1525 (ESRRA IHC Kit).



Immunohistochemical analysis of paraffin-embedded rat stomach tissue slide using KHC1525 (ESRRA IHC Kit).