

IHC*easy* IRF2 Ready-To-Use IHC Kit

Catalog Number: **KHC1531**

General Information

Sample type:
FFPE tissue

Cited sample type:

Reactivity:
Human, Mouse, Rat

Cited Reactivity:

Assay type:
Immunohistochemistry

Primary antibody type:
Rabbit Polyclonal

Secondary antibody type:
Polymer-HRP-Goat anti-Rabbit

Kit Component

Component	Size	Concentration
Antigen Retrieval Buffer	100 mL	50×
Washing Buffer	100 mL ×2	20×
Blocking Buffer	5 mL	RTU
Primary Antibody	5 mL	RTU
Secondary Antibody	5 mL	RTU
Chromogen Component A	0.2 mL	RTU
Chromogen Component B	4 mL	RTU
Signal Enhancer	5 mL	RTU
Counter Staining Reagent	5 mL	RTU
Mounting Media	5 mL	RTU
Control Slide	1 slide (Optional)	FFPE
Datasheet	1 Copy	
Manual	1 Copy	

Storage Instructions

All the reagents are stored at 2-8°C. The kit is stable for 6 months from the date of receipt.

Background

IRF2, also known as IFN regulatory factor 2, which belongs to the IRF family. IRF2 specifically binds to the upstream regulatory region of type I IFN and IFN-inducible MHC class I genes (the IFN consensus sequence (ICS)) and represses those genes. IRF2 also acts as an activator for several genes including H4 and IL7. IRF2 constitutively binds to the ISRE promoter to activate IL7. IRF2 is involved in cell cycle regulation through binding the site II (HiNF-M) promoter region of H4 and activating transcription during cell growth.

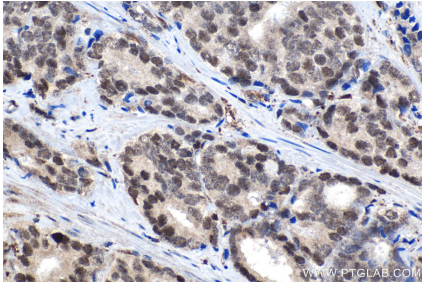
Synonyms

IRF 2, IRF2

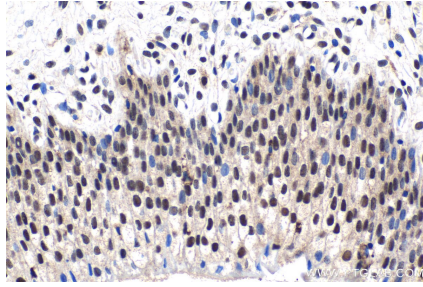
For technical support and original validation data for this product please contact:
T: 1 (888) 4PTGLAB (1-888-478-4522) (toll free in USA), or 1(312) 455-8498 (outside USA)
E: proteintech@ptglab.com
W: ptglab.com

This product is exclusively available under Proteintech Group brand and is not available to purchase from any other manufacturer.

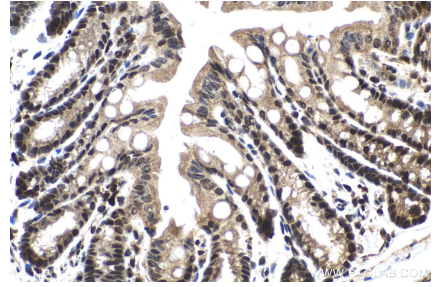
Selected Validation Data



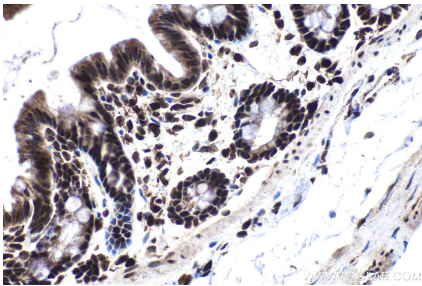
Immunohistochemical analysis of paraffin-embedded human prostate cancer tissue slide using KHC1531 (IRF2 IHC Kit).



Immunohistochemical analysis of paraffin-embedded human urothelial carcinoma tissue slide using KHC1531 (IRF2 IHC Kit).



Immunohistochemical analysis of paraffin-embedded mouse colon tissue slide using KHC1531 (IRF2 IHC Kit).



Immunohistochemical analysis of paraffin-embedded rat colon tissue slide using KHC1531 (IRF2 IHC Kit).