

IHC*easy* TCF4 Ready-To-Use IHC Kit

Catalog Number: **KHC1536**

General Information

Sample type:
FFPE tissue

Cited sample type:

Reactivity:
Huma, Mouse, Rat

Cited Reactivity:

Assay type:
Immunohistochemistry

Primary antibody type:
Rabbit Polyclonal

Secondary antibody type:
Polymer-HRP-Goat anti-Rabbit

Kit Component

Component	Size	Concentration
Antigen Retrieval Buffer	100 mL	50×
Washing Buffer	100 mL ×2	20×
Blocking Buffer	5 mL	RTU
Primary Antibody	5 mL	RTU
Secondary Antibody	5 mL	RTU
Chromogen Component A	0.2 mL	RTU
Chromogen Component B	4 mL	RTU
Signal Enhancer	5 mL	RTU
Counter Staining Reagent	5 mL	RTU
Mounting Media	5 mL	RTU
Control Slide	1 slide (Optional)	FFPE
Datasheet	1 Copy	
Manual	1 Copy	

Storage Instructions

All the reagents are stored at 2-8°C. The kit is stable for 6 months from the date of receipt.

Background

Transcription factor 4 (TCF4), also known as SEF2, ITF2, E2-2, and ME2, binds to the immunoglobulin enhancer Mu-E5/KE5-motif. Involved in the initiation of neuronal differentiation. Activates transcription by binding to the E box (5'-CANNTG-3'). Binds to the E-box present in the somatostatin receptor 2 initiator element (SSTR2-1NR) to activate transcription. By similarity. Human TCF4 mRNA expression is particularly high in the brain. Usage of numerous 5' exons of the human TCF4 gene potentially yields in TCF4 protein isoforms with 18 different N-termini. In addition, the diversity of isoforms is increased by alternative splicing of several internal exons. Some isoforms contain a bipartite nuclear localization signal and are exclusively nuclear, whereas distribution of other isoforms relies on heterodimerization partners. Preferentially binds to either 5'-ACANNTGT-3' or 5'-CCANNTGG-3'. TCF4 has several splicing isoforms that are expressed differentially in tissues and during cancer progression.

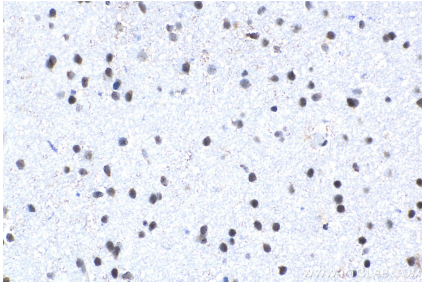
Synonyms

bHLHb19, E2 2, ITF 2, ITF2, PTHS, SEF 2, SEF2, SEF2 1, SEF2 1A, SEF2 1B, SL3 3 enhancer factor 2, TCF 4, TCF4, transcription factor 4

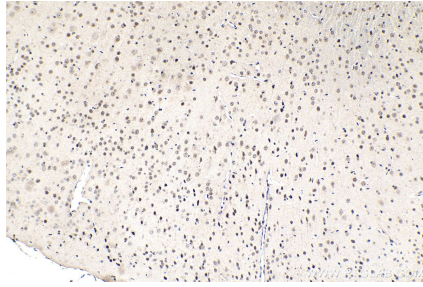
For technical support and original validation data for this product please contact:
T: 1 (888) 4PTGLAB (1-888-478-4522) (toll free in USA), or 1(312) 455-8498 (outside USA)
E: proteintech@ptglab.com
W: ptglab.com

This product is exclusively available under Proteintech Group brand and is not available to purchase from any other manufacturer.

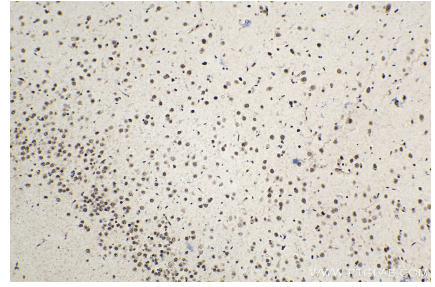
Selected Validation Data



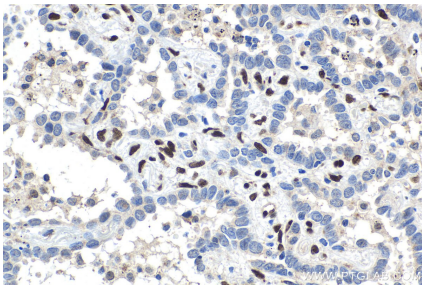
Immunohistochemical analysis of paraffin-embedded human gliomas tissue slide using KHC1536 (TCF4 IHC Kit).



Immunohistochemical analysis of paraffin-embedded mouse brain tissue slide using KHC1536 (TCF4 IHC Kit).



Immunohistochemical analysis of paraffin-embedded rat brain tissue slide using KHC1536 (TCF4 IHC Kit).



Immunohistochemical analysis of paraffin-embedded human lung cancer tissue slide using KHC1536 (TCF4 IHC Kit).