

IHC*easy* NR4A1 Ready-To-Use IHC Kit

Catalog Number: **KHC1558**

General Information

Sample type:
FFPE tissue

Cited sample type:

Reactivity:
Human, Mouse, Rat

Cited Reactivity:

Assay type:
Immunohistochemistry

Primary antibody type:
Rabbit Polyclonal

Secondary antibody type:
Polymer-HRP-Goat anti-Rabbit

Kit Component

Component	Size	Concentration
Antigen Retrieval Buffer	100 mL	50×
Washing Buffer	100 mL ×2	20×
Blocking Buffer	5 mL	RTU
Primary Antibody	5 mL	RTU
Secondary Antibody	5 mL	RTU
Chromogen Component A	0.2 mL	RTU
Chromogen Component B	4 mL	RTU
Signal Enhancer	5 mL	RTU
Counter Staining Reagent	5 mL	RTU
Mounting Media	5 mL	RTU
Control Slide	1 slide (Optional)	FFPE
Datasheet	1 Copy	
Manual	1 Copy	

Storage Instructions

All the reagents are stored at 2-8°C. The kit is stable for 6 months from the date of receipt.

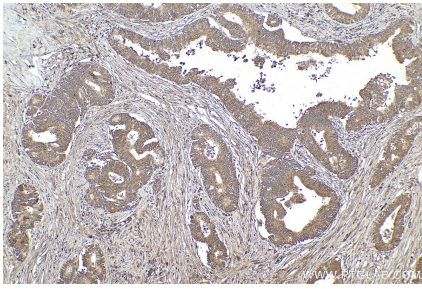
Background

NR4A1 is an orphan nuclear receptor that act concomitantly with NURR1 in regulating the expression of delay-early genes during liver regeneration. Also NR4A1 has linked not only to cell apoptosis but also proliferation in response to growth factor. It plays a role in caspase-independent cell death by activation of the ERK pathway and increased activity of MEF2 transcription factors.

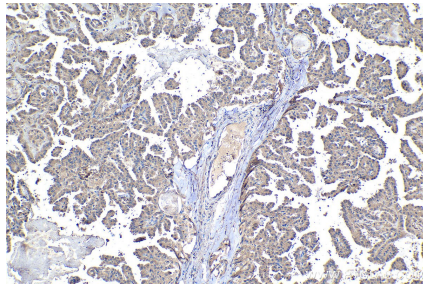
Synonyms

Early response protein NAK1, GFRP1, HMR, N10, NAK 1, NAK1, NGFIB, NR4A1, NUR77, Orphan nuclear receptor HMR, Orphan nuclear receptor TR3, ST 59, Testicular receptor 3, TR3

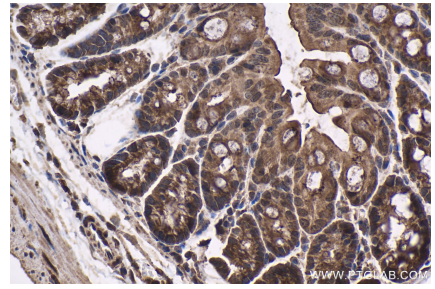
Selected Validation Data



Immunohistochemical analysis of paraffin-embedded human pancreas cancer tissue slide using KHC1558 (NR4A1 IHC Kit).



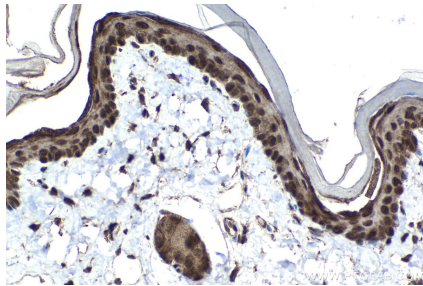
Immunohistochemical analysis of paraffin-embedded human thyroid cancer tissue slide using KHC1558 (NR4A1 IHC Kit).



Immunohistochemical analysis of paraffin-embedded mouse colon tissue slide using KHC1558 (NR4A1 IHC Kit).



Immunohistochemical analysis of paraffin-embedded rat colon tissue slide using KHC1558 (NR4A1 IHC Kit).



Immunohistochemical analysis of paraffin-embedded rat skin tissue slide using KHC1558 (NR4A1 IHC Kit).