

# IHC*easy* RXRB Ready-To-Use IHC Kit

Catalog Number: **KHC1575**

## General Information

**Sample type:**  
FFPE tissue

**Cited sample type:**

**Reactivity:**  
Human, Mouse, Rat

**Cited Reactivity:**

**Assay type:**  
Immunohistochemistry

**Primary antibody type:**  
Rabbit Polyclonal

**Secondary antibody type:**  
Polymer-HRP-Goat anti-Rabbit

## Kit Component

| Component                | Size               | Concentration |
|--------------------------|--------------------|---------------|
| Antigen Retrieval Buffer | 100 mL             | 50×           |
| Washing Buffer           | 100 mL ×2          | 20×           |
| Blocking Buffer          | 5 mL               | RTU           |
| Primary Antibody         | 5 mL               | RTU           |
| Secondary Antibody       | 5 mL               | RTU           |
| Chromogen Component A    | 0.2 mL             | RTU           |
| Chromogen Component B    | 4 mL               | RTU           |
| Signal Enhancer          | 5 mL               | RTU           |
| Counter Staining Reagent | 5 mL               | RTU           |
| Mounting Media           | 5 mL               | RTU           |
| Control Slide            | 1 slide (Optional) | FFPE          |
| Datasheet                | 1 Copy             |               |
| Manual                   | 1 Copy             |               |

## Storage Instructions

All the reagents are stored at 2-8°C. The kit is stable for 6 months from the date of receipt.

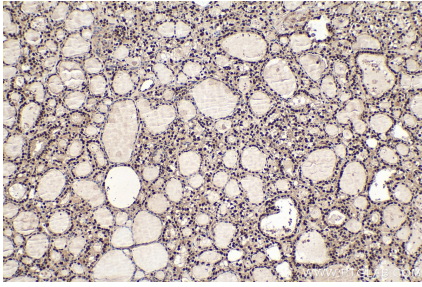
## Background

Retinoid X Receptor beta (RXRB) is a member of the retinoid X receptor (RXR) family of nuclear receptors which are involved in mediating the effects of retinoic acid. RXRB heterodimerizes with other nuclear hormone receptors, such as RAR, the thyroid hormone receptor and the vitamin D3 receptor, to enhance binding to their cognate response elements.

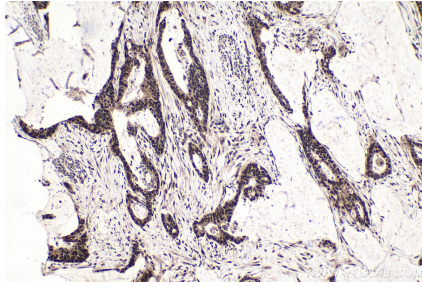
## Synonyms

DAUDI6, H 2RIIBP, NR2B2, RCoR 1, Retinoid X receptor beta, retinoid X receptor, beta, RXRB

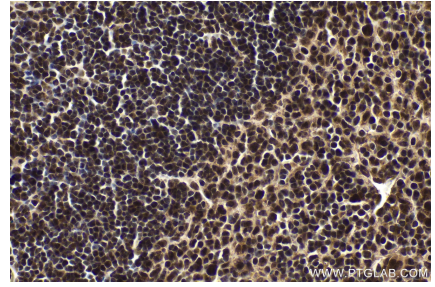
## Selected Validation Data



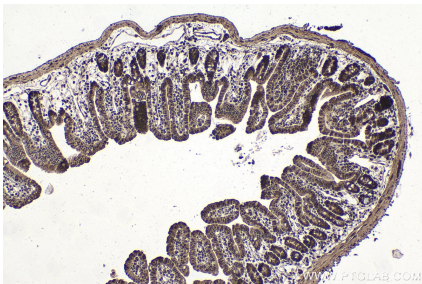
Immunohistochemical analysis of paraffin-embedded human thyroid cancer tissue slide using KHC1575 (RXRB IHC Kit).



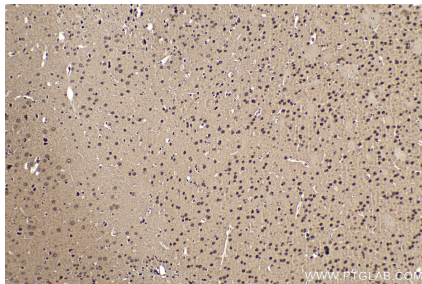
Immunohistochemical analysis of paraffin-embedded human urothelial carcinoma tissue slide using KHC1575 (RXRB IHC Kit).



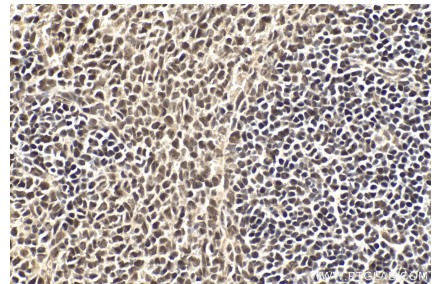
Immunohistochemical analysis of paraffin-embedded mouse spleen tissue slide using KHC1575 (RXRB IHC Kit).



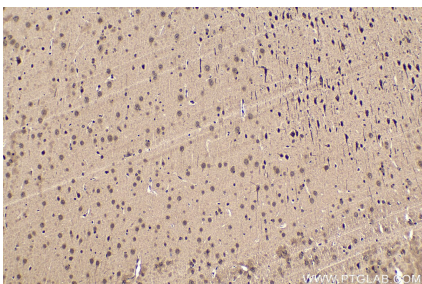
Immunohistochemical analysis of paraffin-embedded mouse small intestine tissue slide using KHC1575 (RXRB IHC Kit).



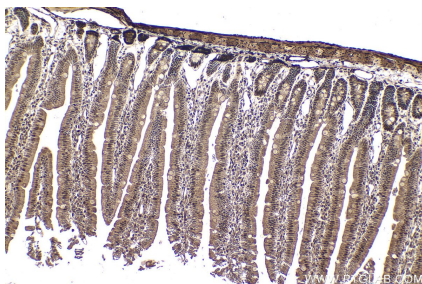
Immunohistochemical analysis of paraffin-embedded mouse brain tissue slide using KHC1575 (RXRB IHC Kit).



Immunohistochemical analysis of paraffin-embedded rat spleen tissue slide using KHC1575 (RXRB IHC Kit).



Immunohistochemical analysis of paraffin-embedded rat brain tissue slide using KHC1575 (RXRB IHC Kit).



Immunohistochemical analysis of paraffin-embedded rat small intestine tissue slide using KHC1575 (RXRB IHC Kit).