

# IHC*easy* NF2 Ready-To-Use IHC Kit

Catalog Number: **KHC1582**

## General Information

**Sample type:**  
FFPE tissue

**Cited sample type:**

**Reactivity:**  
Human, Mouse, Rat

**Cited Reactivity:**

**Assay type:**  
Immunohistochemistry

**Primary antibody type:**  
Rabbit Polyclonal

**Secondary antibody type:**  
Polymer-HRP-Goat anti-Rabbit

## Kit Component

Component	Size	Concentration
Antigen Retrieval Buffer	100 mL	50×
Washing Buffer	100 mL ×2	20×
Blocking Buffer	5 mL	RTU
Primary Antibody	5 mL	RTU
Secondary Antibody	5 mL	RTU
Chromogen Component A	0.2 mL	RTU
Chromogen Component B	4 mL	RTU
Signal Enhancer	5 mL	RTU
Counter Staining Reagent	5 mL	RTU
Mounting Media	5 mL	RTU
Control Slide	1 slide (Optional)	FFPE
Datasheet	1 Copy	
Manual	1 Copy	

## Storage Instructions

All the reagents are stored at 2-8°C. The kit is stable for 6 months from the date of receipt.

## Background

Neurofibromatosis 2 (NF2) tumor suppressor protein-merlin is involved in Hippo/SWH signaling pathway that associated with tumor suppression by restricting proliferation and promoting apoptosis. It has been reported that merlin can change to phosphorylation form which inactivates merlin tumor suppressive abilities at serine 518 induced by Rac effector p21-activated kinase 2. The mutation of the NF2 tumor suppressor gene may lead to nervous system tumors, mesotheliomas and metastatic tumors.

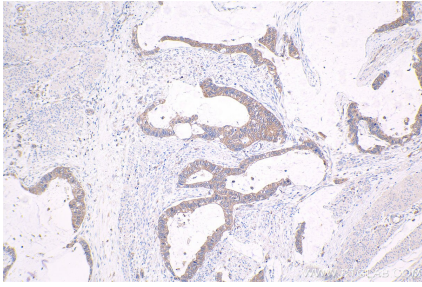
## Synonyms

ACN, BANF, Merlin, Neurofibromin 2, neurofibromin 2 (merlin), NF2, SCH, Schwannomerlin, Schwannomin

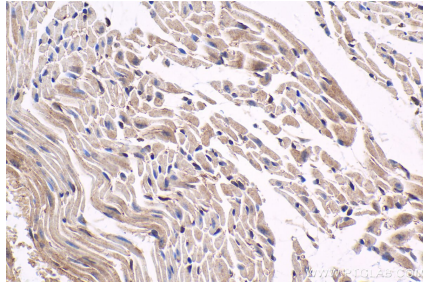
For technical support and original validation data for this product please contact:  
T: 1 (888) 4PTGLAB (1-888-478-4522) (toll free in USA), or 1(312) 455-8498 (outside USA)  
E: [proteintech@ptglab.com](mailto:proteintech@ptglab.com)  
W: [ptglab.com](http://ptglab.com)

This product is exclusively available under Proteintech Group brand and is not available to purchase from any other manufacturer.

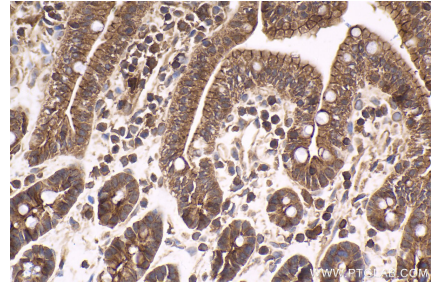
## Selected Validation Data



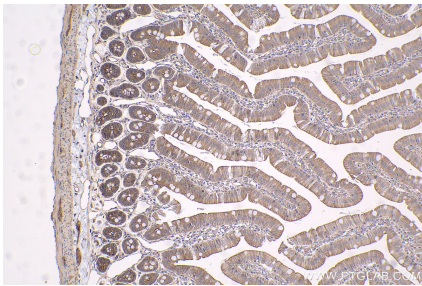
Immunohistochemical analysis of paraffin-embedded human urothelial carcinoma tissue slide using KHC1582 (NF2 IHC Kit).



Immunohistochemical analysis of paraffin-embedded mouse heart tissue slide using KHC1582 (NF2 IHC Kit).



Immunohistochemical analysis of paraffin-embedded mouse small intestine tissue slide using KHC1582 (NF2 IHC Kit).



Immunohistochemical analysis of paraffin-embedded rat small intestine tissue slide using KHC1582 (NF2 IHC Kit).