

IHC*easy* IGHMBP2 Ready-To-Use IHC Kit

Catalog Number: **KHC1589**

General Information

Sample type:
FFPE tissue

Cited sample type:

Reactivity:
Human, Mouse, Rat

Cited Reactivity:

Assay type:
Immunohistochemistry

Primary antibody type:
Rabbit Polyclonal

Secondary antibody type:
Polymer-HRP-Goat anti-Rabbit

Kit Component

Component	Size	Concentration
Antigen Retrieval Buffer	100 mL	50×
Washing Buffer	100 mL ×2	20×
Blocking Buffer	5 mL	RTU
Primary Antibody	5 mL	RTU
Secondary Antibody	5 mL	RTU
Chromogen Component A	0.2 mL	RTU
Chromogen Component B	4 mL	RTU
Signal Enhancer	5 mL	RTU
Counter Staining Reagent	5 mL	RTU
Mounting Media	5 mL	RTU
Control Slide	1 slide (Optional)	FFPE
Datasheet	1 Copy	
Manual	1 Copy	

Storage Instructions

All the reagents are stored at 2-8°C. The kit is stable for 6 months from the date of receipt.

Background

IGHMBP2 also named as immunoglobulin mu binding protein 2 is a 993 amino-acid protein, which localizes in nuclear and cytoplasm. IGHMBP2 belongs to the DNA2/NAM7 helicase family. IGHMBP2 also acts as a transcriptional regulator and is necessary for transcriptional activation of the flounder liver-type antifreeze protein gene. IGHMBP2 exists as a homooligomer and is part of the cytosolic ribonucleoprotein complex.

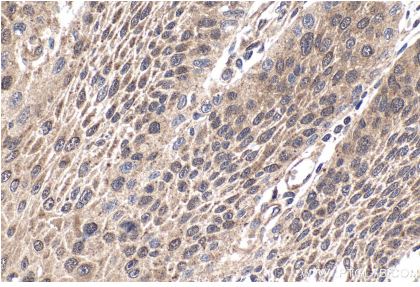
Synonyms

ATP dependent helicase IGHMBP2, CATF1, DNA binding protein SMUBP 2, GF 1, Glial factor 1, HCSA, HMN6, IGHMBP2, SMARD1, SMBP2, SMUBP2

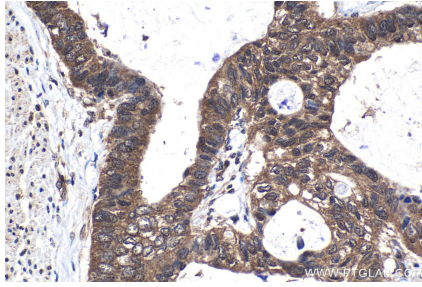
For technical support and original validation data for this product please contact:
T: 1 (888) 4PTGLAB (1-888-478-4522) (toll free in USA), or 1(312) 455-8498 (outside USA)
E: proteintech@ptglab.com
W: ptglab.com

This product is exclusively available under Proteintech Group brand and is not available to purchase from any other manufacturer.

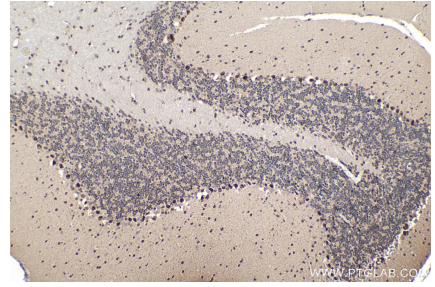
Selected Validation Data



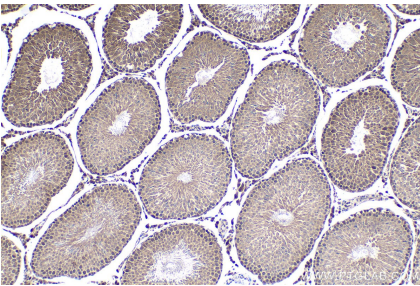
Immunohistochemical analysis of paraffin-embedded human oesophagus cancer tissue slide using KHC1589 (IGHMBP2 IHC Kit).



Immunohistochemical analysis of paraffin-embedded human urothelial carcinoma tissue slide using KHC1589 (IGHMBP2 IHC Kit).



Immunohistochemical analysis of paraffin-embedded mouse cerebellum tissue slide using KHC1589 (IGHMBP2 IHC Kit).



Immunohistochemical analysis of paraffin-embedded rat testis tissue slide using KHC1589 (IGHMBP2 IHC Kit).