

IHC*easy* PSMB10 Ready-To-Use IHC Kit

Catalog Number: **KHC1591**

General Information

Sample type:
FFPE tissue

Cited sample type:

Reactivity:
Human, Mouse, Rat

Cited Reactivity:

Assay type:
Immunohistochemistry

Primary antibody type:
Rabbit Polyclonal

Secondary antibody type:
Polymer-HRP-Goat anti-Rabbit

Kit Component

Component	Size	Concentration
Antigen Retrieval Buffer	100 mL	50×
Washing Buffer	100 mL ×2	20×
Blocking Buffer	5 mL	RTU
Primary Antibody	5 mL	RTU
Secondary Antibody	5 mL	RTU
Chromogen Component A	0.2 mL	RTU
Chromogen Component B	4 mL	RTU
Signal Enhancer	5 mL	RTU
Counter Staining Reagent	5 mL	RTU
Mounting Media	5 mL	RTU
Control Slide	1 slide (Optional)	FFPE
Datasheet	1 Copy	
Manual	1 Copy	

Storage Instructions

All the reagents are stored at 2-8°C. The kit is stable for 6 months from the date of receipt.

Background

The proteasome subunit, beta type 10 (PSMB10) gene regulated by interferon-gamma is a core part of the 26S proteasome complex, which is an important protein degrading system. Study identifies immunosubunit PSMB10 as a novel regulator that contributes to Ang II-induced atrial fibrillation (AF) and suggests that inhibition of PSMB10 may represent a potential therapeutic target for treating hypertensive AF.

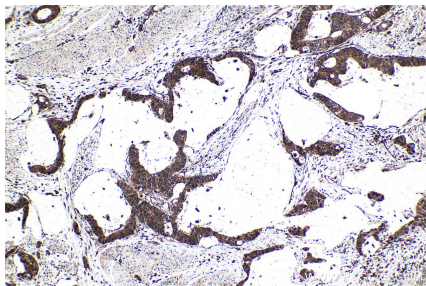
Synonyms

beta2i, LMP10, Low molecular mass protein 10, Macropain subunit MECL1, MECL1, Proteasome MECL1, Proteasome subunit beta 2i, PSMB10

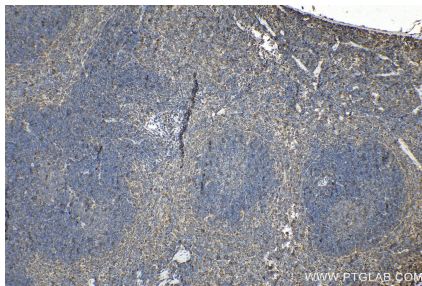
For technical support and original validation data for this product please contact:
T: 1 (888) 4PTGLAB (1-888-478-4522) (toll free in USA), or 1(312) 455-8498 (outside USA)
E: proteintech@ptglab.com
W: ptglab.com

This product is exclusively available under Proteintech Group brand and is not available to purchase from any other manufacturer.

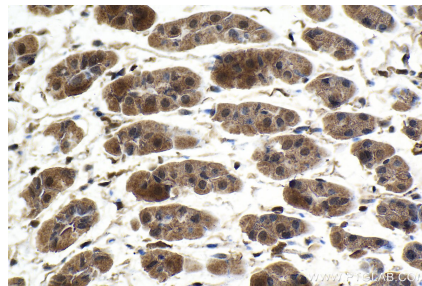
Selected Validation Data



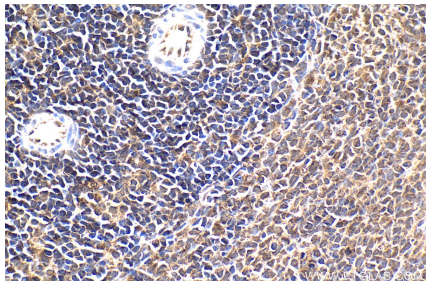
Immunohistochemical analysis of paraffin-embedded human urothelial carcinoma tissue slide using KHC1591 (PSMB10 IHC Kit).



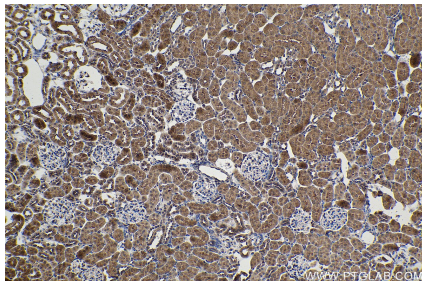
Immunohistochemical analysis of paraffin-embedded mouse spleen tissue slide using KHC1591 (PSMB10 IHC Kit).



Immunohistochemical analysis of paraffin-embedded mouse stomach tissue slide using KHC1591 (PSMB10 IHC Kit).



Immunohistochemical analysis of paraffin-embedded rat spleen tissue slide using KHC1591 (PSMB10 IHC Kit).



Immunohistochemical analysis of paraffin-embedded rat kidney tissue slide using KHC1591 (PSMB10 IHC Kit).