

IHC*easy* PSMB2 Ready-To-Use IHC Kit

Catalog Number: **KHC1615**

General Information

Sample type:
FFPE tissue

Cited sample type:

Reactivity:
Human, Mouse, Rat

Cited Reactivity:

Assay type:
Immunohistochemistry

Primary antibody type:
Rabbit Polyclonal

Secondary antibody type:
Polymer-HRP-Goat anti-Rabbit

Kit Component

Component	Size	Concentration
Antigen Retrieval Buffer	100 mL	50×
Washing Buffer	100 mL ×2	20×
Blocking Buffer	5 mL	RTU
Primary Antibody	5 mL	RTU
Secondary Antibody	5 mL	RTU
Chromogen Component A	0.2 mL	RTU
Chromogen Component B	4 mL	RTU
Signal Enhancer	5 mL	RTU
Counter Staining Reagent	5 mL	RTU
Mounting Media	5 mL	RTU
Control Slide	1 slide (Optional)	FFPE
Datasheet	1 Copy	
Manual	1 Copy	

Storage Instructions

All the reagents are stored at 2-8°C. The kit is stable for 6 months from the date of receipt.

Background

PSMB2, Proteasome subunit beta type-2, is also known as 20S proteasome subunit beta-4. The proteasome is responsible for degradation of short lived and misfolded cytosolic and nuclear proteins in the cell and cleaves peptides in an ATP/ubiquitin-dependent process in a non-lysosomal pathway. PSMB2 is up-regulated in ovarian cancer cell lines. The up-regulation of PSMB2 may indicate the activated neuronal defensive mechanism in VAD (vitamin A depletion) brain regions. Knockdown of PSMB2 suppresses hepatocellular carcinoma and gastric cancer cell proliferation and invasion.

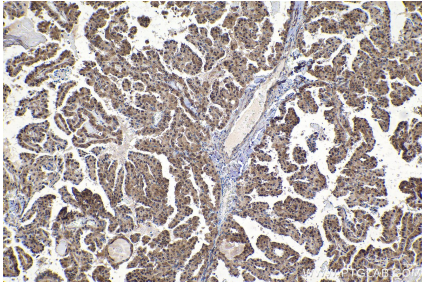
Synonyms

20S proteasome, HC7 I, Macropain subunit C7 I, Proteasome component C7 I, Proteasome subunit beta type 2, PSMB2

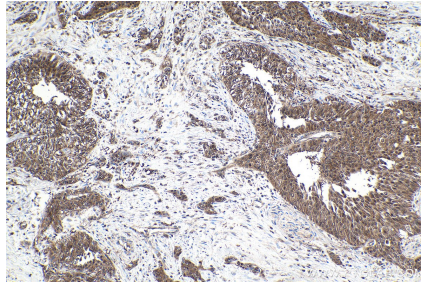
For technical support and original validation data for this product please contact:
T: 1 (888) 4PTGLAB (1-888-478-4522) (toll free in USA), or 1(312) 455-8498 (outside USA)
E: proteintech@ptglab.com
W: ptglab.com

This product is exclusively available under Proteintech Group brand and is not available to purchase from any other manufacturer.

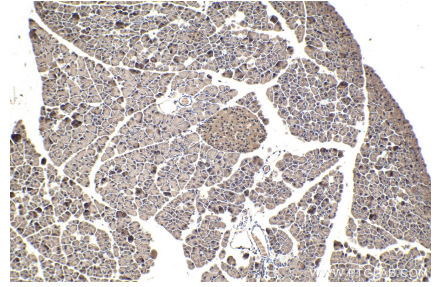
Selected Validation Data



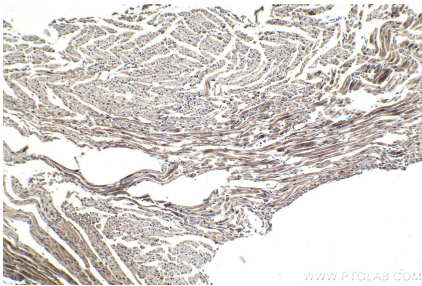
Immunohistochemical analysis of paraffin-embedded human thyroid cancer tissue slide using KHC1615 (PSMB2 IHC Kit).



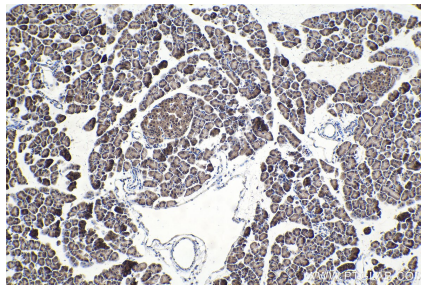
Immunohistochemical analysis of paraffin-embedded human urothelial carcinoma tissue slide using KHC1615 (PSMB2 IHC Kit).



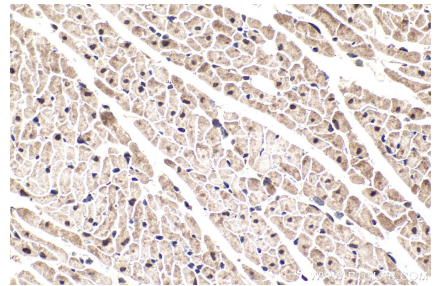
Immunohistochemical analysis of paraffin-embedded mouse pancreas tissue slide using KHC1615 (PSMB2 IHC Kit).



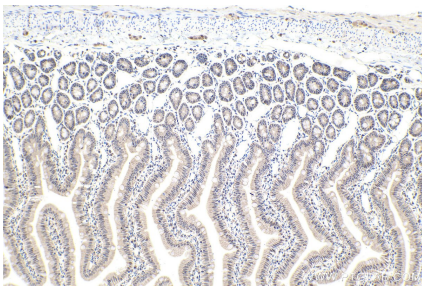
Immunohistochemical analysis of paraffin-embedded mouse heart tissue slide using KHC1615 (PSMB2 IHC Kit).



Immunohistochemical analysis of paraffin-embedded rat pancreas tissue slide using KHC1615 (PSMB2 IHC Kit).



Immunohistochemical analysis of paraffin-embedded rat heart tissue slide using KHC1615 (PSMB2 IHC Kit).



Immunohistochemical analysis of paraffin-embedded rat small intestine tissue slide using KHC1615 (PSMB2 IHC Kit).