

IHC*easy* MTPN Ready-To-Use IHC Kit

Catalog Number: **KHC1635**

General Information

Sample type:
FFPE tissue

Cited sample type:

Reactivity:
Human, Mouse, Rat

Cited Reactivity:

Assay type:
Immunohistochemistry

Primary antibody type:
Rabbit Polyclonal

Secondary antibody type:
Polymer-HRP-Goat anti-Rabbit

Kit Component

Component	Size	Concentration
Antigen Retrieval Buffer	100 mL	50×
Washing Buffer	100 mL ×2	20×
Blocking Buffer	5 mL	RTU
Primary Antibody	5 mL	RTU
Secondary Antibody	5 mL	RTU
Chromogen Component A	0.2 mL	RTU
Chromogen Component B	4 mL	RTU
Signal Enhancer	5 mL	RTU
Counter Staining Reagent	5 mL	RTU
Mounting Media	5 mL	RTU
Control Slide	1 slide (Optional)	FFPE
Datasheet	1 Copy	
Manual	1 Copy	

Storage Instructions

All the reagents are stored at 2-8°C. The kit is stable for 6 months from the date of receipt.

Background

Myotrophin (MTPN) is a ubiquitously expressed cytoplasmic protein that was first isolated from the hearts of spontaneously hypertensive rats. Protein sequence analysis revealed that MTPN was composed of 118 amino acids and was occupied by two and a half internal 33 amino acid ankyrin repeats. MTPN stimulates protein synthesis and increases the expression of a number of cardiac marker genes (such as atrial natriuretic factor and b-myosin heavy chain) in cardiomyocytes leading to hypertrophy. In skeletal muscle, MTPN is also a positive growth factor in promoting skeletal muscle growth.

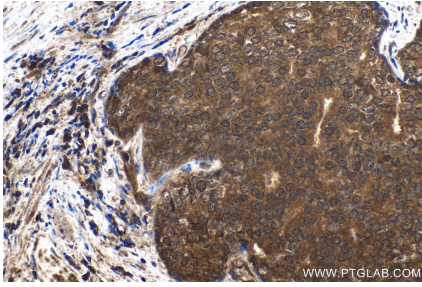
Synonyms

GCDP, MTPN, myotrophin, Protein V 1, V 1

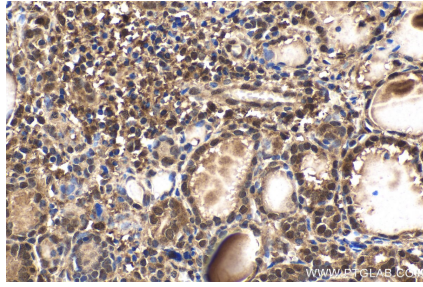
For technical support and original validation data for this product please contact:
T: 1 (888) 4PTGLAB (1-888-478-4522) (toll free in USA), or 1(312) 455-8498 (outside USA)
E: proteintech@ptglab.com
W: ptglab.com

This product is exclusively available under Proteintech Group brand and is not available to purchase from any other manufacturer.

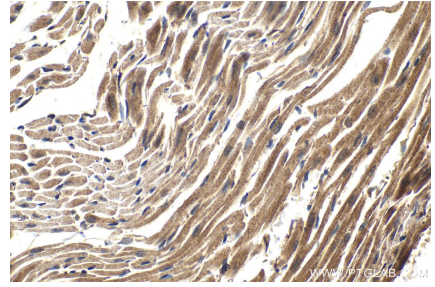
Selected Validation Data



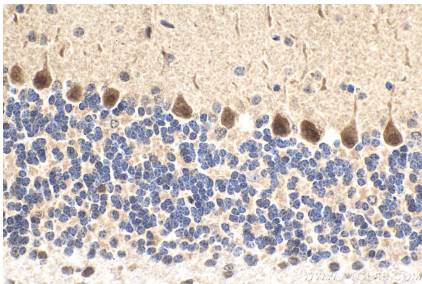
Immunohistochemical analysis of paraffin-embedded human prostate cancer tissue slide using KHC1635 (MTPN IHC Kit).



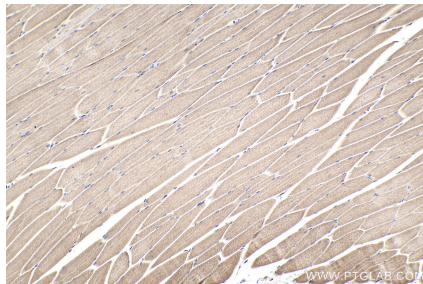
Immunohistochemical analysis of paraffin-embedded human thyroid cancer tissue slide using KHC1635 (MTPN IHC Kit).



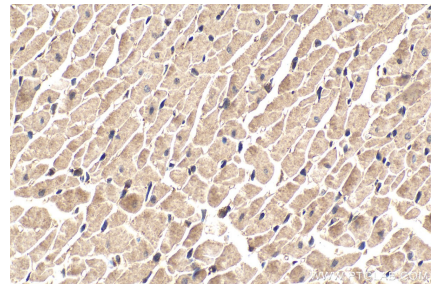
Immunohistochemical analysis of paraffin-embedded mouse heart tissue slide using KHC1635 (MTPN IHC Kit).



Immunohistochemical analysis of paraffin-embedded mouse cerebellum tissue slide using KHC1635 (MTPN IHC Kit).



Immunohistochemical analysis of paraffin-embedded mouse skeletal muscle tissue slide using KHC1635 (MTPN IHC Kit).



Immunohistochemical analysis of paraffin-embedded rat heart tissue slide using KHC1635 (MTPN IHC Kit).