

# IHC*easy* CSNK2A1 Ready-To-Use IHC Kit

Catalog Number: **KHC1651**

## General Information

**Sample type:**  
FFPE tissue

**Cited sample type:**

**Reactivity:**  
Human, Mouse, Rat

**Cited Reactivity:**

**Assay type:**  
Immunohistochemistry

**Primary antibody type:**  
Rabbit Polyclonal

**Secondary antibody type:**  
Polymer-HRP-Goat anti-Rabbit

## Kit Component

Component	Size	Concentration
Antigen Retrieval Buffer	100 mL	50×
Washing Buffer	100 mL ×2	20×
Blocking Buffer	5 mL	RTU
Primary Antibody	5 mL	RTU
Secondary Antibody	5 mL	RTU
Chromogen Component A	0.2 mL	RTU
Chromogen Component B	4 mL	RTU
Signal Enhancer	5 mL	RTU
Counter Staining Reagent	5 mL	RTU
Mounting Media	5 mL	RTU
Control Slide	1 slide (Optional)	FFPE
Datasheet	1 Copy	
Manual	1 Copy	

## Storage Instructions

All the reagents are stored at 2-8°C. The kit is stable for 6 months from the date of receipt.

## Background

CSNK2A1 (Casein kinase II subunit alpha) is also named as CK2A1 and belongs to the CK2 subfamily. The CSNK2A1 gene contains 8 exons whose sequences comprise bases 102 to 824 of the coding region of the human casein kinase II alpha subunit. Casein kinase II is a ubiquitous protein-serine/threonine kinase in eukaryotic cells that catalyzes the phosphorylation of many protein substrates and has been regarded as a second-messenger-independent protein kinase. Casein kinase 2 has been found to be increased at protein level and up-regulated at the level of enzyme activity in the majority of cancers. However, elevated levels of casein kinase 2 are present in certain normal organs such as brain and testes.

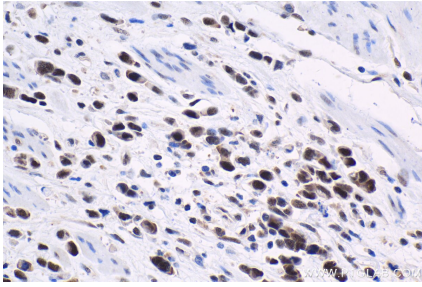
## Synonyms

Casein kinase II subunit alpha, CK II alpha, CK2a, CK2A1, CK2α, CKII, CSNK2A1

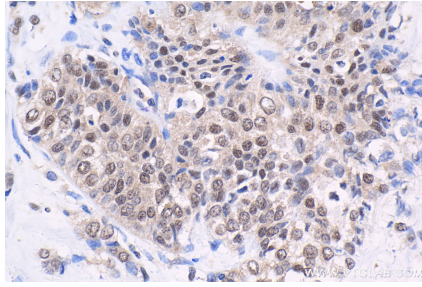
For technical support and original validation data for this product please contact:  
T: 1 (888) 4PTGLAB (1-888-478-4522) (toll free in USA), or 1(312) 455-8498 (outside USA)  
E: [proteintech@ptglab.com](mailto:proteintech@ptglab.com)  
W: [ptglab.com](http://ptglab.com)

This product is exclusively available under Proteintech Group brand and is not available to purchase from any other manufacturer.

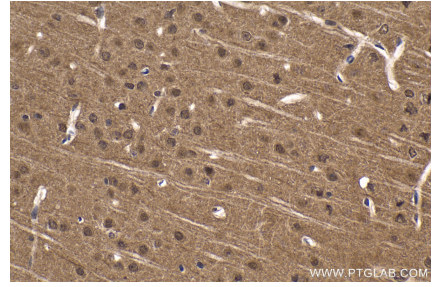
## Selected Validation Data



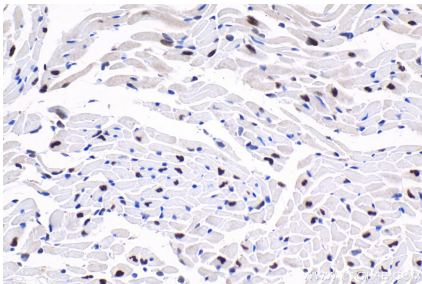
Immunohistochemical analysis of paraffin-embedded human stomach cancer tissue slide using KHC1651 (CSNK2A1 IHC Kit).



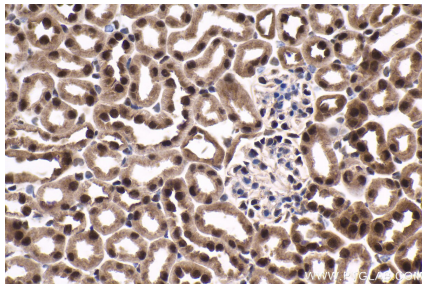
Immunohistochemical analysis of paraffin-embedded human urothelial carcinoma tissue slide using KHC1651 (CSNK2A1 IHC Kit).



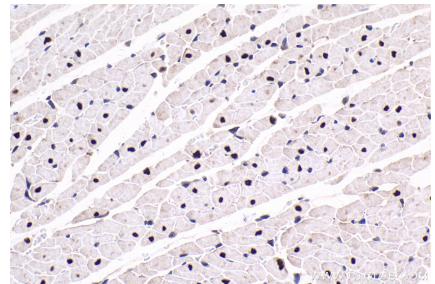
Immunohistochemical analysis of paraffin-embedded mouse brain tissue slide using KHC1651 (CSNK2A1 IHC Kit).



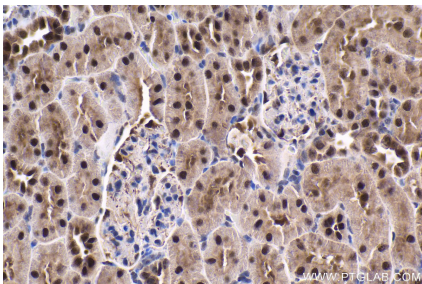
Immunohistochemical analysis of paraffin-embedded mouse heart tissue slide using KHC1651 (CSNK2A1 IHC Kit).



Immunohistochemical analysis of paraffin-embedded mouse kidney tissue slide using KHC1651 (CSNK2A1 IHC Kit).



Immunohistochemical analysis of paraffin-embedded rat heart tissue slide using KHC1651 (CSNK2A1 IHC Kit).



Immunohistochemical analysis of paraffin-embedded rat kidney tissue slide using KHC1651 (CSNK2A1 IHC Kit).