

IHC*easy* EP300 Ready-To-Use IHC Kit

Catalog Number: **KHC1688**

General Information

Sample type:
FFPE tissue

Cited sample type:

Reactivity:
Human, Mouse, Rat

Cited Reactivity:

Assay type:
Immunohistochemistry

Primary antibody type:
Rabbit Polyclonal

Secondary antibody type:
Polymer-HRP-Goat anti-Rabbit

Kit Component

Component	Size	Concentration
Antigen Retrieval Buffer	100 mL	50×
Washing Buffer	100 mL ×2	20×
Blocking Buffer	5 mL	RTU
Primary Antibody	5 mL	RTU
Secondary Antibody	5 mL	RTU
Chromogen Component A	0.2 mL	RTU
Chromogen Component B	4 mL	RTU
Signal Enhancer	5 mL	RTU
Counter Staining Reagent	5 mL	RTU
Mounting Media	5 mL	RTU
Control Slide	1 slide (Optional)	FFPE
Datasheet	1 Copy	
Manual	1 Copy	

Storage Instructions

All the reagents are stored at 2-8°C. The kit is stable for 6 months from the date of receipt.

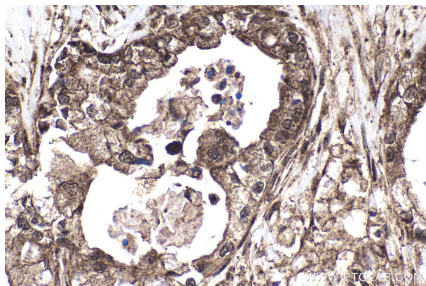
Background

p300 is a 300 kDa global transcriptional coactivator with histone acetyltransferase (HAT) activity. p300 binds to chromosomal histones and modulates the chromatin conformation by acetylation of its histones, leading to activation of various gene transcriptions. p300 plays a critical role in DNA repair synthesis after DNA damage induced by ultraviolet or radiation. p300 is overexpressed in various types of cancer, which is associated with worse patient outcomes.

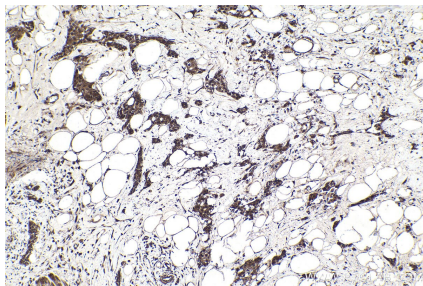
Synonyms

E1A associated protein p300, E1A binding protein p300, EP300, Histone acetyltransferase p300, KAT3B, p300, p300 HAT

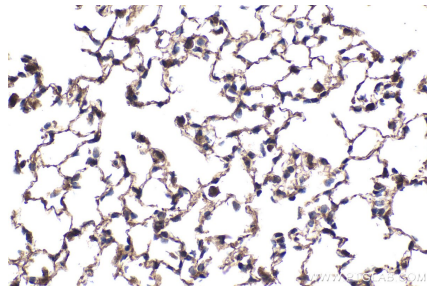
Selected Validation Data



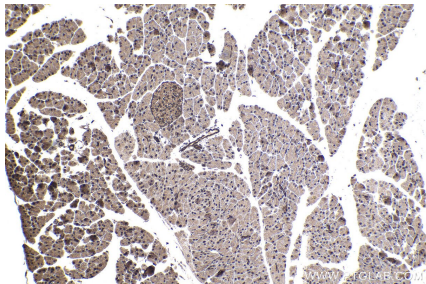
Immunohistochemical analysis of paraffin-embedded human pancreas cancer tissue slide using KHC1688 (EP300 IHC Kit).



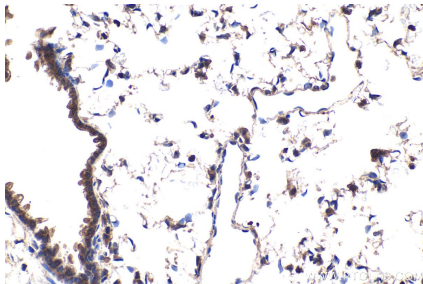
Immunohistochemical analysis of paraffin-embedded human urothelial carcinoma tissue slide using KHC1688 (EP300 IHC Kit).



Immunohistochemical analysis of paraffin-embedded mouse lung tissue slide using KHC1688 (EP300 IHC Kit).



Immunohistochemical analysis of paraffin-embedded mouse pancreas tissue slide using KHC1688 (EP300 IHC Kit).



Immunohistochemical analysis of paraffin-embedded rat lung tissue slide using KHC1688 (EP300 IHC Kit).