

IHC*easy* REST Ready-To-Use IHC Kit

Catalog Number: **KHC1701**

General Information

Sample type:
FFPE tissue
Cited sample type:
Reactivity:
Human, Mouse
Cited Reactivity:

Assay type:
Immunohistochemistry
Primary antibody type:
Rabbit Polyclonal
Secondary antibody type:
Polymer-HRP-Goat anti-Rabbit

Kit Component

Component	Size	Concentration
Antigen Retrieval Buffer	100 mL	50×
Washing Buffer	100 mL × 2	20×
Blocking Buffer	5 mL	RTU
Primary Antibody	5 mL	RTU
Secondary Antibody	5 mL	RTU
Chromogen Component A	0.2 mL	RTU
Chromogen Component B	4 mL	RTU
Signal Enhancer	5 mL	RTU
Counter Staining Reagent	5 mL	RTU
Mounting Media	5 mL	RTU
Control Slide	1 slide (Optional)	FFPE
Datasheet	1 Copy	
Manual	1 Copy	

Storage Instructions

All the reagents are stored at 2-8°C. The kit is stable for 6 months from the date of receipt.

Background

REST also named as NRSF or X2 box repressor is a 1097 amino acid protein, which contains 9 C2H2-type zinc fingers. REST as transcriptional repressor binds neuron-restrictive silencer element (NRSE) and represses neuronal gene transcription in non-neuronal cells. Repressor element 1 (RE1) silencing transcription factor (REST), is widely expressed during embryogenesis, and plays a strategic role in terminal neuronal differentiation.

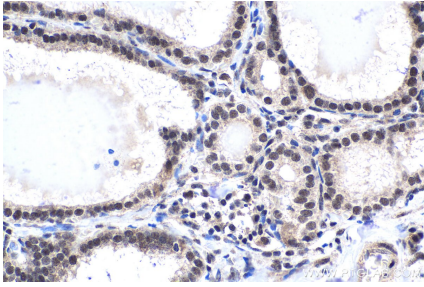
Synonyms

NRSF, REST, X2 box repressor, XBR

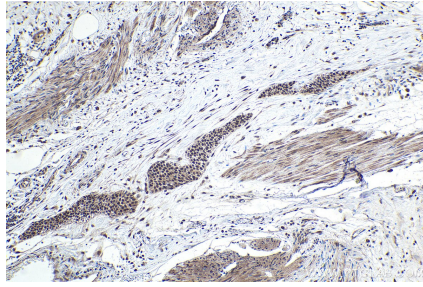
For technical support and original validation data for this product please contact:
T: 1 (888) 4PTGLAB (1-888-478-4522) (toll free in USA), or 1(312) 455-8498 (outside USA)
E: proteintech@ptglab.com
W: ptglab.com

This product is exclusively available under Proteintech Group brand and is not available to purchase from any other manufacturer.

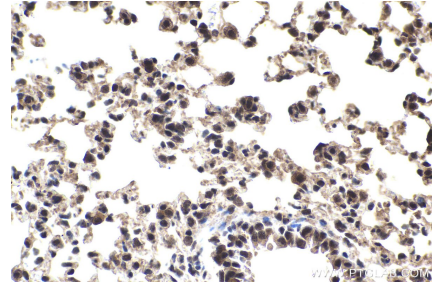
Selected Validation Data



Immunohistochemical analysis of paraffin-embedded human thyroid cancer tissue slide using KHC1701 (REST IHC Kit).



Immunohistochemical analysis of paraffin-embedded human urothelial carcinoma tissue slide using KHC1701 (REST IHC Kit).



Immunohistochemical analysis of paraffin-embedded mouse lung tissue slide using KHC1701 (REST IHC Kit).