

IHC*easy* THOC5 Ready-To-Use IHC Kit

Catalog Number: **KHC1719**

General Information

Sample type:
FFPE tissue

Cited sample type:

Reactivity:
Human, Mouse, Rat

Cited Reactivity:

Assay type:
Immunohistochemistry

Primary antibody type:
Rabbit Polyclonal

Secondary antibody type:
Polymer-HRP-Goat anti-Rabbit

Kit Component

Component	Size	Concentration
Antigen Retrieval Buffer	100 mL	50×
Washing Buffer	100 mL ×2	20×
Blocking Buffer	5 mL	RTU
Primary Antibody	5 mL	RTU
Secondary Antibody	5 mL	RTU
Chromogen Component A	0.2 mL	RTU
Chromogen Component B	4 mL	RTU
Signal Enhancer	5 mL	RTU
Counter Staining Reagent	5 mL	RTU
Mounting Media	5 mL	RTU
Control Slide	1 slide (Optional)	FFPE
Datasheet	1 Copy	
Manual	1 Copy	

Storage Instructions

All the reagents are stored at 2-8°C. The kit is stable for 6 months from the date of receipt.

Background

THOC5, also named as C22orf19, or KIAA0983, is a 683 amino acid protein, which belongs to the THOC5 family. THOC5 is ubiquitously expressed in many tissues. THOC5 localizes in the nucleus and acts as component of the THO subcomplex of the TREX complex which is thought to couple mRNA transcription, processing and nuclear export, and which specifically associates with spliced mRNA and not with unspliced pre-mRNA. THOC5 plays a role in cytokine-stimulated monocytic development and affects granulocyte/macrophage differentiation.

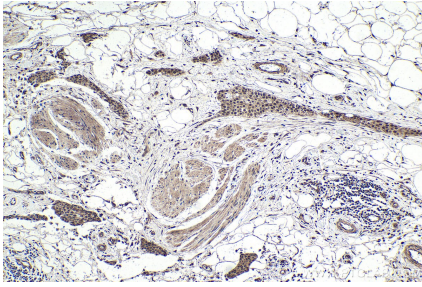
Synonyms

C22orf19, Fmip, fSAP79, hTREX90, KIAA0983, PK1.3, Placental protein 39.2, PP39.2, THO complex 5, THO complex subunit 5 homolog, THOC5

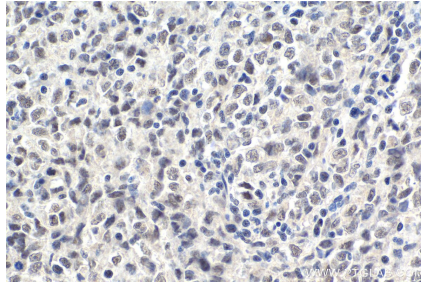
For technical support and original validation data for this product please contact:
T: 1 (888) 4PTGLAB (1-888-478-4522) (toll free in USA), or 1(312) 455-8498 (outside USA)
E: proteintech@ptglab.com
W: ptglab.com

This product is exclusively available under Proteintech Group brand and is not available to purchase from any other manufacturer.

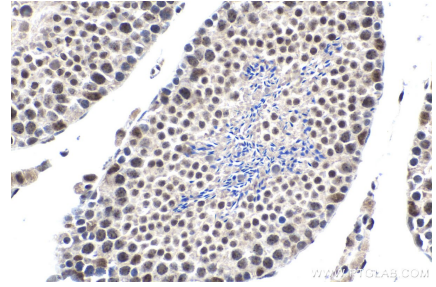
Selected Validation Data



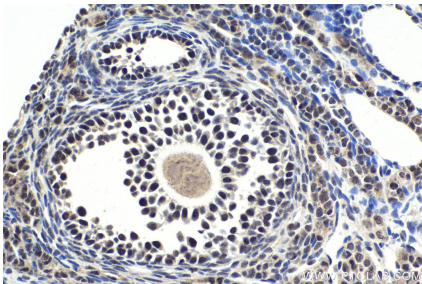
Immunohistochemical analysis of paraffin-embedded human urothelial carcinoma tissue slide using KHC1719 (THOC5 IHC Kit).



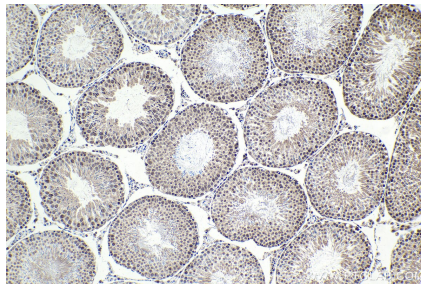
Immunohistochemical analysis of paraffin-embedded human malignant melanoma tissue slide using KHC1719 (THOC5 IHC Kit).



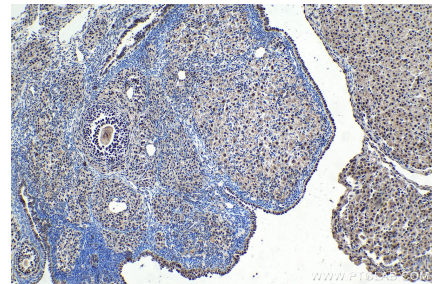
Immunohistochemical analysis of paraffin-embedded mouse testis tissue slide using KHC1719 (THOC5 IHC Kit).



Immunohistochemical analysis of paraffin-embedded mouse ovary tissue slide using KHC1719 (THOC5 IHC Kit).



Immunohistochemical analysis of paraffin-embedded rat testis tissue slide using KHC1719 (THOC5 IHC Kit).



Immunohistochemical analysis of paraffin-embedded rat ovary tissue slide using KHC1719 (THOC5 IHC Kit).