

IHC*easy* DDX39B Ready-To-Use IHC Kit

Catalog Number: **KHC1720**

General Information

Sample type:
FFPE tissue

Cited sample type:

Reactivity:
Human, Mouse, Rat

Cited Reactivity:

Assay type:
Immunohistochemistry

Primary antibody type:
Rabbit Polyclonal

Secondary antibody type:
Polymer-HRP-Goat anti-Rabbit

Kit Component

Component	Size	Concentration
Antigen Retrieval Buffer	100 mL	50×
Washing Buffer	100 mL ×2	20×
Blocking Buffer	5 mL	RTU
Primary Antibody	5 mL	RTU
Secondary Antibody	5 mL	RTU
Chromogen Component A	0.2 mL	RTU
Chromogen Component B	4 mL	RTU
Signal Enhancer	5 mL	RTU
Counter Staining Reagent	5 mL	RTU
Mounting Media	5 mL	RTU
Control Slide	1 slide (Optional)	FFPE
Datasheet	1 Copy	
Manual	1 Copy	

Storage Instructions

All the reagents are stored at 2-8°C. The kit is stable for 6 months from the date of receipt.

Background

DDX39B, is a 428 amino acid protein, which contains one helicase C-terminal domain, one helicase ATP-binding domain and belongs to the DEAD box helicase family. DECD subfamily. DDX39B localizes in the nucleus and cytoplasm. BAT1 is involved in nuclear export of spliced and unspliced mRNA. BAT1 as ATP dependent RNA helicase, may be a translation initiation factor and acts as a negative regulator of inflammatory cytokines. The primary antibody in this kit may cross-react with DDX39A.

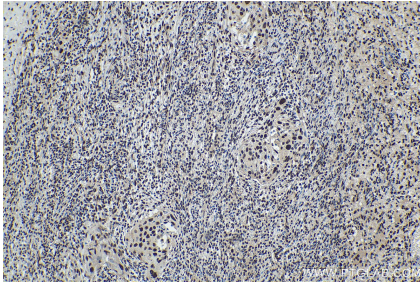
Synonyms

ATP dependent RNA helicase p47, BAT1, D6S81E, DDX39, DDX39B, DEAD box protein UAP56, HLA B associated transcript 1, Spliceosome RNA helicase BAT1, UAP56

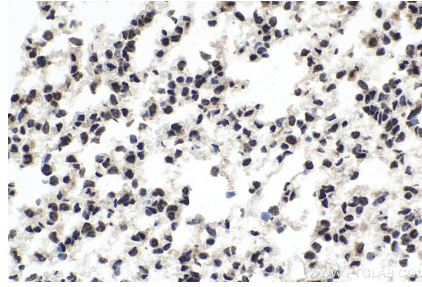
For technical support and original validation data for this product please contact:
T: 1 (888) 4PTGLAB (1-888-478-4522) (toll free in USA), or 1(312) 455-8498 (outside USA)
E: proteintech@ptglab.com
W: ptglab.com

This product is exclusively available under Proteintech Group brand and is not available to purchase from any other manufacturer.

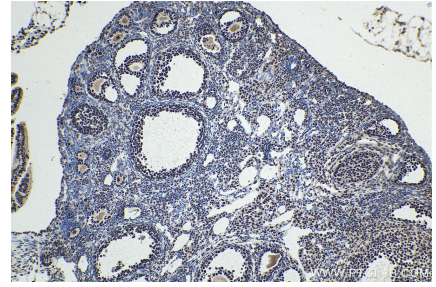
Selected Validation Data



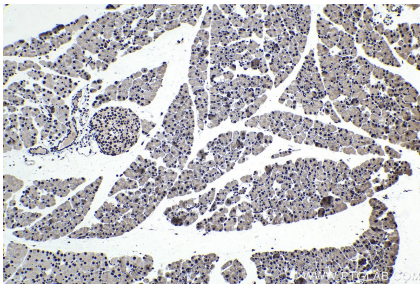
Immunohistochemical analysis of paraffin-embedded human cervical cancer tissue slide using KHC1720 (DDX39B IHC Kit).



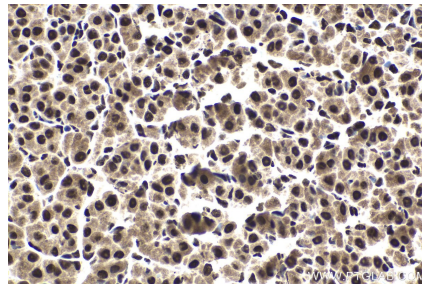
Immunohistochemical analysis of paraffin-embedded mouse lung tissue slide using KHC1720 (DDX39B IHC Kit).



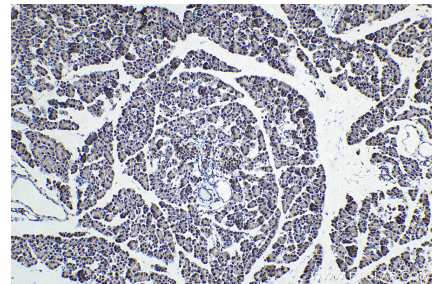
Immunohistochemical analysis of paraffin-embedded mouse ovary tissue slide using KHC1720 (DDX39B IHC Kit).



Immunohistochemical analysis of paraffin-embedded mouse pancreas tissue slide using KHC1720 (DDX39B IHC Kit).



Immunohistochemical analysis of paraffin-embedded rat ovary tissue slide using KHC1720 (DDX39B IHC Kit).



Immunohistochemical analysis of paraffin-embedded rat pancreas tissue slide using KHC1720 (DDX39B IHC Kit).