

IHC*easy* PTK6/BRK Ready-To-Use IHC Kit

Catalog Number: **KHC1721**

General Information

Sample type:
FFPE tissue

Cited sample type:

Reactivity:
Human, Mouse, Rat

Cited Reactivity:

Assay type:
Immunohistochemistry

Primary antibody type:
Rabbit Polyclonal

Secondary antibody type:
Polymer-HRP-Goat anti-Rabbit

Kit Component

Component	Size	Concentration
Antigen Retrieval Buffer	100 mL	50×
Washing Buffer	100 mL ×2	20×
Blocking Buffer	5 mL	RTU
Primary Antibody	5 mL	RTU
Secondary Antibody	5 mL	RTU
Chromogen Component A	0.2 mL	RTU
Chromogen Component B	4 mL	RTU
Signal Enhancer	5 mL	RTU
Counter Staining Reagent	5 mL	RTU
Mounting Media	5 mL	RTU
Control Slide	1 slide (Optional)	FFPE
Datasheet	1 Copy	
Manual	1 Copy	

Storage Instructions

All the reagents are stored at 2-8°C. The kit is stable for 6 months from the date of receipt.

Background

BRK, also named as PTK6 and FLJ42088, is a cytoplasmic nonreceptor protein kinase which may function as an intracellular signal transducer in epithelial tissues. PTK6 can phosphorylate KHDRBS1, KHDRBS2, KHDRBS3 and STAP2/BKS. Overexpression of PTK6 in mammary epithelial cells leads to sensitization of the cells to epidermal growth factor and results in a partially transformed phenotype. Expression of PTK6 has been detected at low levels in some breast tumors but not in normal breast tissue. Its presence in the nucleus appears to be linked to suppression of tumor progression.

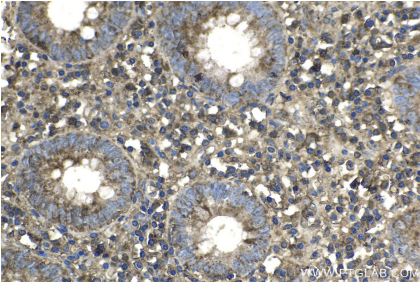
Synonyms

Breast tumor kinase, BRK, Protein tyrosine kinase 6, PTK6, PTK6 protein tyrosine kinase 6, Tyrosine protein kinase BRK

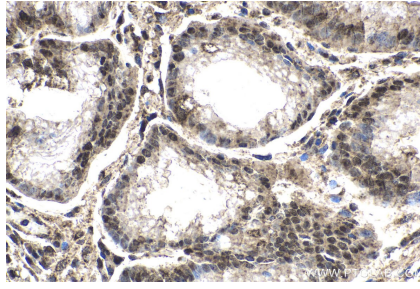
For technical support and original validation data for this product please contact:
T: 1 (888) 4PTGLAB (1-888-478-4522) (toll free in USA), or 1(312) 455-8498 (outside USA)
E: proteintech@ptglab.com
W: ptglab.com

This product is exclusively available under Proteintech Group brand and is not available to purchase from any other manufacturer.

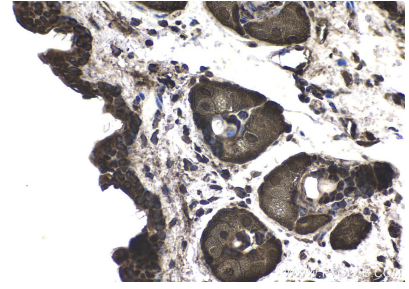
Selected Validation Data



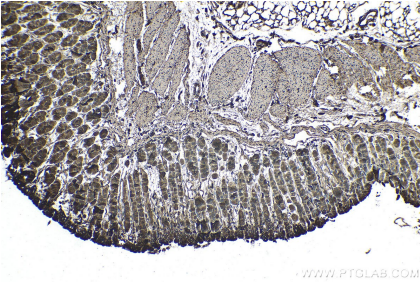
Immunohistochemical analysis of paraffin-embedded human appendicitis tissue slide using KHC1721 (PTK6/BRK IHC Kit).



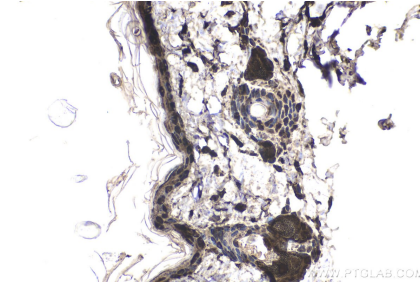
Immunohistochemical analysis of paraffin-embedded human stomach cancer tissue slide using KHC1721 (PTK6/BRK IHC Kit).



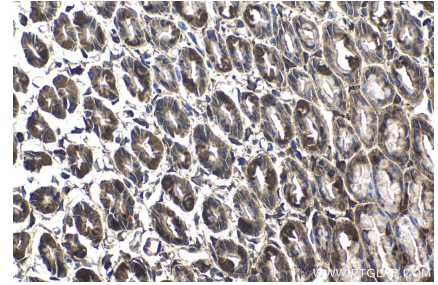
Immunohistochemical analysis of paraffin-embedded mouse skin tissue slide using KHC1721 (PTK6/BRK IHC Kit).



Immunohistochemical analysis of paraffin-embedded mouse stomach tissue slide using KHC1721 (PTK6/BRK IHC Kit).



Immunohistochemical analysis of paraffin-embedded rat skin tissue slide using KHC1721 (PTK6/BRK IHC Kit).



Immunohistochemical analysis of paraffin-embedded rat stomach tissue slide using KHC1721 (PTK6/BRK IHC Kit).