

IHC*easy* SMARCD3 Ready-To-Use IHC Kit

Catalog Number: **KHC1791**

General Information

Sample type:
FFPE tissue

Cited sample type:

Reactivity:
Human, Mouse, Rat

Cited Reactivity:

Assay type:
Immunohistochemistry

Primary antibody type:
Rabbit Polyclonal

Secondary antibody type:
Polymer-HRP-Goat anti-Rabbit

Kit Component

Component	Size	Concentration
Antigen Retrieval Buffer	100 mL	50×
Washing Buffer	100 mL × 2	20×
Blocking Buffer	5 mL	RTU
Primary Antibody	5 mL	RTU
Secondary Antibody	5 mL	RTU
Chromogen Component A	0.2 mL	RTU
Chromogen Component B	4 mL	RTU
Signal Enhancer	5 mL	RTU
Counter Staining Reagent	5 mL	RTU
Mounting Media	5 mL	RTU
Control Slide	1 slide (Optional)	FFPE
Datasheet	1 Copy	
Manual	1 Copy	

Storage Instructions

All the reagents are stored at 2-8°C. The kit is stable for 6 months from the date of receipt.

Background

SMARCD3 is a component of the SWI/SNF (mating type switching/sucrose non-fermenting) chromatin remodeling complex, which evolutionarily conserved from yeast to human, and all complexes contain a core set of conserved components, including BRG1/Brm-associated factors (BAFs) and a DNA-dependent SWI2/SNF2-like ATPase, which enables chromatin remodeling. SMARCD3 isoforms bind to several nuclear receptors and transcription factors of various families. SMARCD3 proteins interact in a ligand-independent manner with peroxisome proliferator-activated receptor gamma and enhance its transcriptional activity.

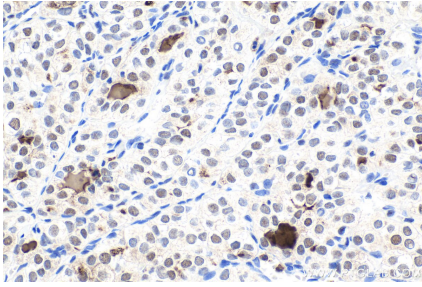
Synonyms

BAF60C, BRG1 associated factor 60C, CRACD3, Rsc6p, SMARCD3

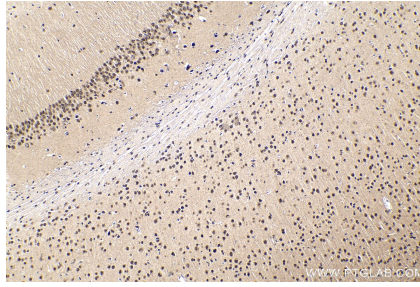
For technical support and original validation data for this product please contact:
T: 1 (888) 4PTGLAB (1-888-478-4522) (toll free in USA), or 1(312) 455-8498 (outside USA)
E: proteintech@ptglab.com
W: ptglab.com

This product is exclusively available under Proteintech Group brand and is not available to purchase from any other manufacturer.

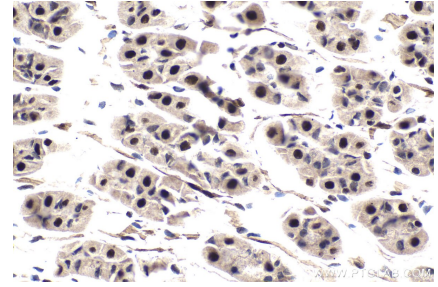
Selected Validation Data



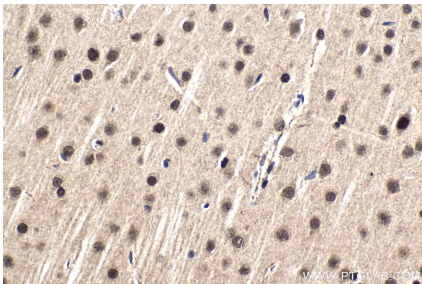
Immunohistochemical analysis of paraffin-embedded human thyroid cancer tissue slide using KHC1791 (SMARCD3 IHC Kit).



Immunohistochemical analysis of paraffin-embedded mouse brain tissue slide using KHC1791 (SMARCD3 IHC Kit).



Immunohistochemical analysis of paraffin-embedded mouse stomach tissue slide using KHC1791 (SMARCD3 IHC Kit).



Immunohistochemical analysis of paraffin-embedded rat brain tissue slide using KHC1791 (SMARCD3 IHC Kit).