

IHC*easy* PHF5A Ready-To-Use IHC Kit

Catalog Number: **KHC1800**

General Information

Sample type:
FFPE tissue

Cited sample type:

Reactivity:
Human, Rat

Cited Reactivity:

Assay type:
Immunohistochemistry

Primary antibody type:
Mouse Monoclonal

Secondary antibody type:
Polymer-HRP-Goat anti-Mouse

Kit Component

Component	Size	Concentration
Antigen Retrieval Buffer	100 mL	50×
Washing Buffer	100 mL ×2	20×
Blocking Buffer	5 mL	RTU
Primary Antibody	5 mL	RTU
Secondary Antibody	5 mL	RTU
Chromogen Component A	0.2 mL	RTU
Chromogen Component B	4 mL	RTU
Signal Enhancer	5 mL	RTU
Counter Staining Reagent	5 mL	RTU
Mounting Media	5 mL	RTU
Control Slide	1 slide (Optional)	FFPE
Datasheet	1 Copy	
Manual	1 Copy	

Storage Instructions

All the reagents are stored at 2-8°C. The kit is stable for 6 months from the date of receipt.

Background

The PHD finger-like domain protein 5a (PHF5A) is ubiquitously expressed and is located in the nucleus. The gene Phf5a and its human counterpart PHF5A (former name Ini) are located on rat chromosome 7 (RNO7q34) and human chromosome 22 (HSA2213q2), respectively. The rat gene consists of four exons, while the human gene have five exons. Both genes encode a highly conserved protein of 110 amino acids that contains a PHD finger domain. It acts as a transcriptional regulator by binding to the GJA1/Cx43 promoter and enhancing its up-regulation by ESR1/ER-alpha and is involved in pre-mRNA splicing.

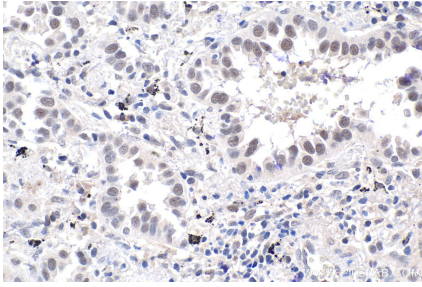
Synonyms

bK223H9.2, INI, PHD finger protein 5A, PHF5A, SF3b14b

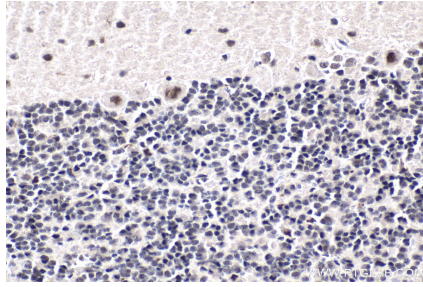
For technical support and original validation data for this product please contact:
T: 1 (888) 4PTGLAB (1-888-478-4522) (toll free in USA), or 1(312) 455-8498 (outside USA)
E: proteintech@ptglab.com
W: ptglab.com

This product is exclusively available under Proteintech Group brand and is not available to purchase from any other manufacturer.

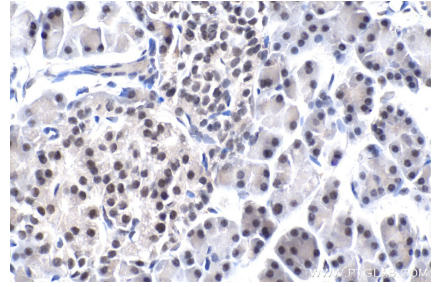
Selected Validation Data



Immunohistochemical analysis of paraffin-embedded human lung cancer tissue slide using KHC1800 (PHF5A IHC Kit).



Immunohistochemical analysis of paraffin-embedded rat cerebellum tissue slide using KHC1800 (PHF5A IHC Kit).



Immunohistochemical analysis of paraffin-embedded rat pancreas tissue slide using KHC1800 (PHF5A IHC Kit).