

IHC*easy* SETX Ready-To-Use IHC Kit

Catalog Number: **KHC1801**

General Information

Sample type:
FFPE tissue

Cited sample type:

Reactivity:
Human, Mouse, Rat

Cited Reactivity:

Assay type:
Immunohistochemistry

Primary antibody type:
Rabbit Polyclonal

Secondary antibody type:
Polymer-HRP-Goat anti-Rabbit

Kit Component

Component	Size	Concentration
Antigen Retrieval Buffer	100 mL	50×
Washing Buffer	100 mL ×2	20×
Blocking Buffer	5 mL	RTU
Primary Antibody	5 mL	RTU
Secondary Antibody	5 mL	RTU
Chromogen Component A	0.2 mL	RTU
Chromogen Component B	4 mL	RTU
Signal Enhancer	5 mL	RTU
Counter Staining Reagent	5 mL	RTU
Mounting Media	5 mL	RTU
Control Slide	1 slide (Optional)	FFPE
Datasheet	1 Copy	
Manual	1 Copy	

Storage Instructions

All the reagents are stored at 2-8°C. The kit is stable for 6 months from the date of receipt.

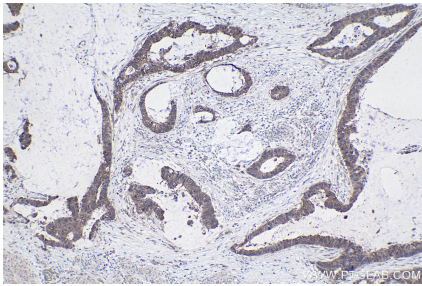
Background

SETX is involved in DNA double-strand breaks damage response generated by oxidative stress. It might also play a role in the development and maturation of germ cells.

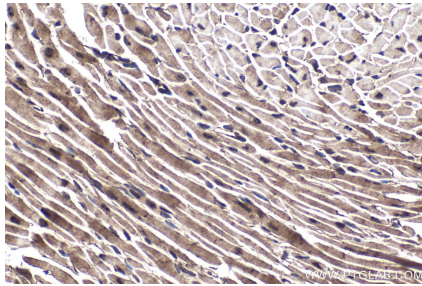
Synonyms

ALS4, AOA2, KIAA0625, Probable helicase senataxin, SCAR1, SEN1 homolog, senataxin, SETX

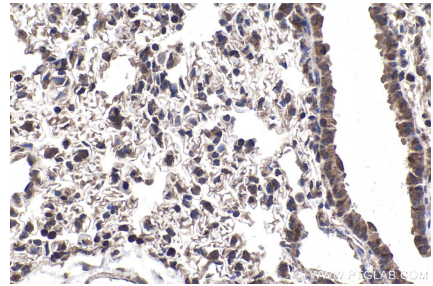
Selected Validation Data



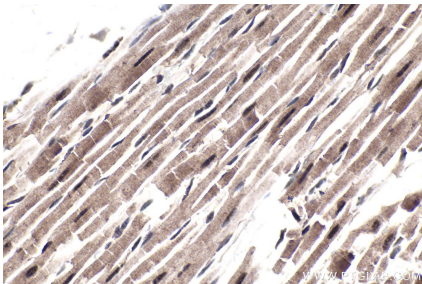
Immunohistochemical analysis of paraffin-embedded human urothelial carcinoma tissue slide using KHC1801 (SETX IHC Kit).



Immunohistochemical analysis of paraffin-embedded mouse heart tissue slide using KHC1801 (SETX IHC Kit).



Immunohistochemical analysis of paraffin-embedded mouse lung tissue slide using KHC1801 (SETX IHC Kit).



Immunohistochemical analysis of paraffin-embedded rat heart tissue slide using KHC1801 (SETX IHC Kit).