

IHC*easy* CREBBP Ready-To-Use IHC Kit

Catalog Number: **KHC1856**

General Information

Sample type:
FFPE tissue

Cited sample type:

Reactivity:
Human, Mouse, Rat

Cited Reactivity:

Assay type:
Immunohistochemistry

Primary antibody type:
Rabbit Polyclonal

Secondary antibody type:
Polymer-HRP-Goat anti-Rabbit

Kit Component

Component	Size	Concentration
Antigen Retrieval Buffer	100 mL	50×
Washing Buffer	100 mL ×2	20×
Blocking Buffer	5 mL	RTU
Primary Antibody	5 mL	RTU
Secondary Antibody	5 mL	RTU
Chromogen Component A	0.2 mL	RTU
Chromogen Component B	4 mL	RTU
Signal Enhancer	5 mL	RTU
Counter Staining Reagent	5 mL	RTU
Mounting Media	5 mL	RTU
Control Slide	1 slide (Optional)	FFPE
Datasheet	1 Copy	
Manual	1 Copy	

Storage Instructions

All the reagents are stored at 2-8°C. The kit is stable for 6 months from the date of receipt.

Background

The acetyltransferase CREB-binding protein (CREBBP; also known as CBP or KAT2A) and E1A-binding protein P300 (EP300; also known as P300 or KAT2B) are two closely related regulators. Both are widely expressed within and outside the hematopoietic system and serve as tumor activators or suppressors depending on the situation. CREBBP/EP300 regulate various key physiological functions, including cell apoptosis, proliferation and differentiation, DNA repair, and somatic cell reprogramming.

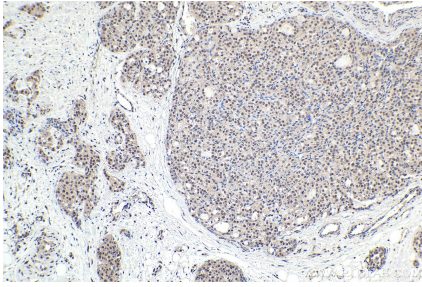
Synonyms

CBP, CREB binding protein, CREBBP, KAT3A, RSTS

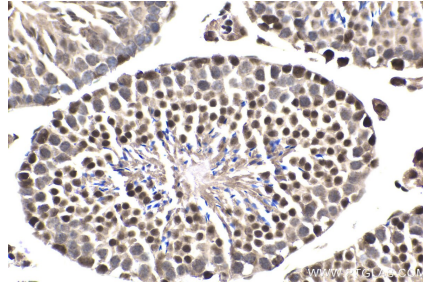
For technical support and original validation data for this product please contact:
T: 1 (888) 4PTGLAB (1-888-478-4522) (toll free in USA), or 1(312) 455-8498 (outside USA)
E: proteintech@ptglab.com
W: ptglab.com

This product is exclusively available under Proteintech Group brand and is not available to purchase from any other manufacturer.

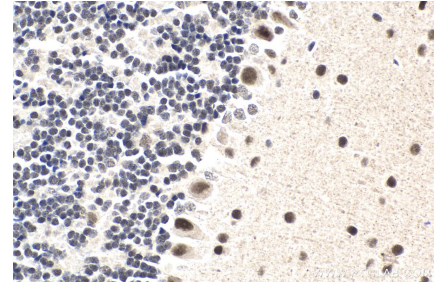
Selected Validation Data



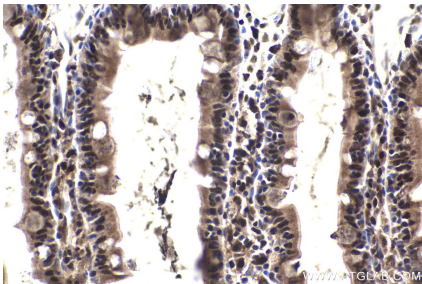
Immunohistochemical analysis of paraffin-embedded human thyroid cancer tissue slide using KHC1856 (CREBBP IHC Kit).



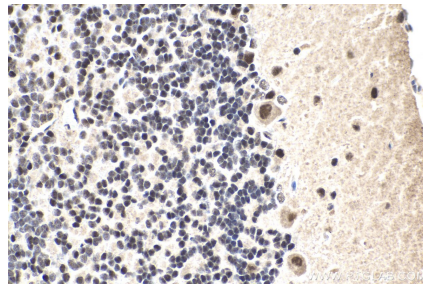
Immunohistochemical analysis of paraffin-embedded mouse testis tissue slide using KHC1856 (CREBBP IHC Kit).



Immunohistochemical analysis of paraffin-embedded mouse cerebellum tissue slide using KHC1856 (CREBBP IHC Kit).



Immunohistochemical analysis of paraffin-embedded rat small intestine tissue slide using KHC1856 (CREBBP IHC Kit).



Immunohistochemical analysis of paraffin-embedded rat cerebellum tissue slide using KHC1856 (CREBBP IHC Kit).