

IHC*easy* TAF15 Ready-To-Use IHC Kit

Catalog Number: **KHC1858**

General Information

Sample type:
FFPE tissue

Cited sample type:

Reactivity:
Human, Mouse, Rat

Cited Reactivity:

Assay type:
Immunohistochemistry

Primary antibody type:
Rabbit Polyclonal

Secondary antibody type:
Polymer-HRP-Goat anti-Rabbit

Kit Component

Component	Size	Concentration
Antigen Retrieval Buffer	100 mL	50×
Washing Buffer	100 mL × 2	20×
Blocking Buffer	5 mL	RTU
Primary Antibody	5 mL	RTU
Secondary Antibody	5 mL	RTU
Chromogen Component A	0.2 mL	RTU
Chromogen Component B	4 mL	RTU
Signal Enhancer	5 mL	RTU
Counter Staining Reagent	5 mL	RTU
Mounting Media	5 mL	RTU
Control Slide	1 slide (Optional)	FFPE
Datasheet	1 Copy	
Manual	1 Copy	

Storage Instructions

All the reagents are stored at 2-8°C. The kit is stable for 6 months from the date of receipt.

Background

TAF15 (TAF2N or TAFII68) is a nuclear protein known to associate with a distinct subpopulation of transcription factor IID (TFIID), a multi-subunit complex that nucleates the pre-initiation complex on promoters of on protein-coding genes. TAF15 harbors a transcriptional activation domain, a RNA recognition motif and many Arg-Gly-Gly repeats that participate in RNA binding. TAF15 along with FUS and EWS constitutes the FET (FUS/EWS/TAF15) protein family of heterogeneous nuclear ribonucleoproteins (hnRNPs) class of RNA binding proteins that are multifunctional proteins implicated in numerous aspects of RNA processing/functions. TAF15 is a nuclear protein that shuttle between cytoplasm-nucleus and as RNA/ssDNA-binding protein, it play specific roles during transcription initiation at distinct promoters and enter the preinitiation complex together with the RNA polymerase II. TAF15 as well as other FET member genes are frequently translocated in sarcomas and rare hematopoietic as well as epithelial cancers. Moreover, dominant mutations in genes coding for four hnRNPs (TDP-43, FUS/TLS, TAF15, and EWS) are found in familial and sporadic cases of ALS and a chromosomal aberration involving TAF15/TAF2N is found in a form of extraskeletal myxoid chondrosarcomas (EMC).

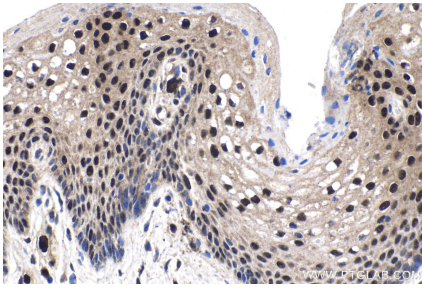
Synonyms

hTAFII68, RBP56, RNA binding protein 56, TAF(II)68, TAF15, TAF2N, TAFII68

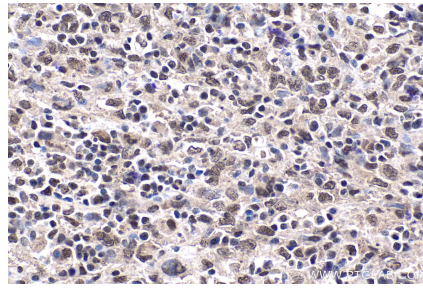
For technical support and original validation data for this product please contact:
T: 1 (888) 4PTGLAB (1-888-478-4522) (toll free in USA), or 1(312) 455-8498 (outside USA)
E: proteintech@ptglab.com
W: ptglab.com

This product is exclusively available under Proteintech Group brand and is not available to purchase from any other manufacturer.

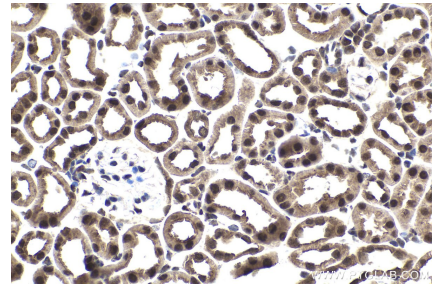
Selected Validation Data



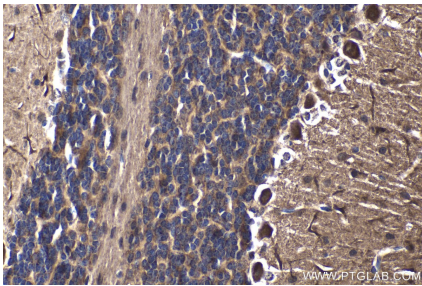
Immunohistochemical analysis of paraffin-embedded human cervical cancer tissue slide using KHC1858 (TAF15 IHC Kit).



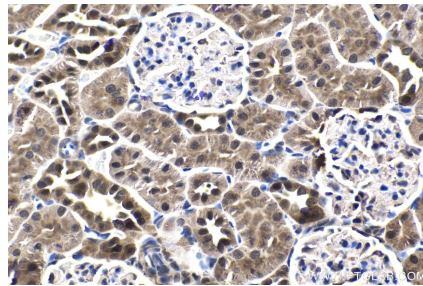
Immunohistochemical analysis of paraffin-embedded human malignant melanoma tissue slide using KHC1858 (TAF15 IHC Kit).



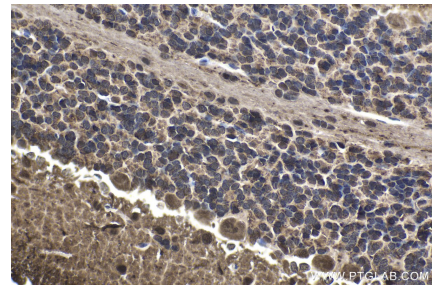
Immunohistochemical analysis of paraffin-embedded mouse kidney tissue slide using KHC1858 (TAF15 IHC Kit).



Immunohistochemical analysis of paraffin-embedded mouse cerebellum tissue slide using KHC1858 (TAF15 IHC Kit).



Immunohistochemical analysis of paraffin-embedded rat kidney tissue slide using KHC1858 (TAF15 IHC Kit).



Immunohistochemical analysis of paraffin-embedded rat cerebellum tissue slide using KHC1858 (TAF15 IHC Kit).