

# IHC*easy* CIDE C Ready-To-Use IHC Kit

Catalog Number: **KHC1867**

## General Information

**Sample type:**  
FFPE tissue

**Cited sample type:**

**Reactivity:**  
Human, Mouse, Rat

**Cited Reactivity:**

**Assay type:**  
Immunohistochemistry

**Primary antibody type:**  
Rabbit Polyclonal

**Secondary antibody type:**  
Polymer-HRP-Goat anti-Rabbit

## Kit Component

Component	Size	Concentration
Antigen Retrieval Buffer	100 mL	50×
Washing Buffer	100 mL ×2	20×
Blocking Buffer	5 mL	RTU
Primary Antibody	5 mL	RTU
Secondary Antibody	5 mL	RTU
Chromogen Component A	0.2 mL	RTU
Chromogen Component B	4 mL	RTU
Signal Enhancer	5 mL	RTU
Counter Staining Reagent	5 mL	RTU
Mounting Media	5 mL	RTU
Control Slide	1 slide (Optional)	FFPE
Datasheet	1 Copy	
Manual	1 Copy	

## Storage Instructions

All the reagents are stored at 2-8°C. The kit is stable for 6 months from the date of receipt.

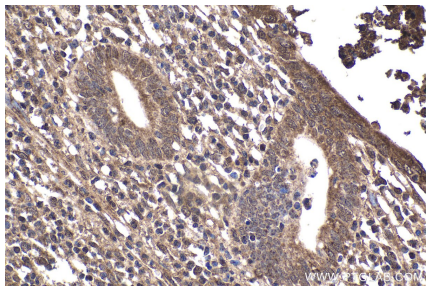
## Background

Cell death-inducing DFF45-like effector (CIDE) proteins, including CIDEA, CIDEB and CIDE C (also called Fsp27 in rodents), are predominantly expressed in brown adipose tissues (BAT), liver and WAT. CIDE C was found to be highly expressed in adipose tissues and to function as a lipid droplet-binding protein that promotes lipid accumulation in adipocytes. While normal mouse livers express low levels of CIDE C protein, its expression is highly upregulated in NALFD, but not in chronic ethanol feeding-induced fatty liver.

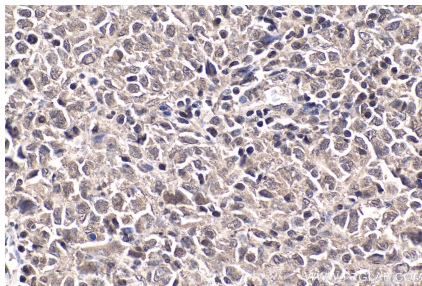
## Synonyms

Cell death activator CIDE 3, CIDE 3, CIDE C, Fsp27

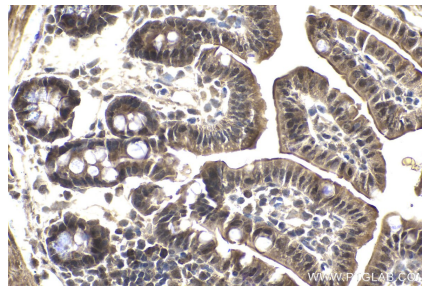
## Selected Validation Data



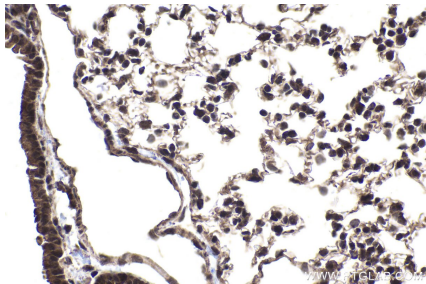
Immunohistochemical analysis of paraffin-embedded human appendicitis tissue slide using KHC1867 (CIDEK IHC Kit).



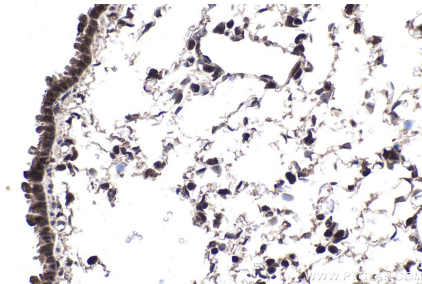
Immunohistochemical analysis of paraffin-embedded human malignant melanoma tissue slide using KHC1867 (CIDEK IHC Kit).



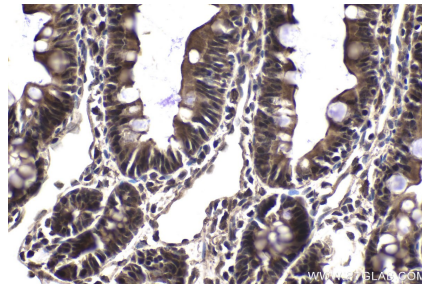
Immunohistochemical analysis of paraffin-embedded mouse small intestine tissue slide using KHC1867 (CIDEK IHC Kit).



Immunohistochemical analysis of paraffin-embedded mouse lung tissue slide using KHC1867 (CIDEK IHC Kit).



Immunohistochemical analysis of paraffin-embedded rat lung tissue slide using KHC1867 (CIDEK IHC Kit).



Immunohistochemical analysis of paraffin-embedded rat small intestine tissue slide using KHC1867 (CIDEK IHC Kit).