

IHC*easy* TCF12 Ready-To-Use IHC Kit

Catalog Number: **KHC1888**

General Information

Sample type:
FFPE tissue
Cited sample type:
Reactivity:
Human
Cited Reactivity:

Assay type:
Immunohistochemistry
Primary antibody type:
Rabbit Polyclonal
Secondary antibody type:
Polymer-HRP-Goat anti-Rabbit

Kit Component

Component	Size	Concentration
Antigen Retrieval Buffer	100 mL	50×
Washing Buffer	100 mL ×2	20×
Blocking Buffer	5 mL	RTU
Primary Antibody	5 mL	RTU
Secondary Antibody	5 mL	RTU
Chromogen Component A	0.2 mL	RTU
Chromogen Component B	4 mL	RTU
Signal Enhancer	5 mL	RTU
Counter Staining Reagent	5 mL	RTU
Mounting Media	5 mL	RTU
Control Slide	1 slide (Optional)	FFPE
Datasheet	1 Copy	
Manual	1 Copy	

Storage Instructions

All the reagents are stored at 2-8°C. The kit is stable for 6 months from the date of receipt.

Background

The product of TCF12 gene (TCF12, also called HTF4 or HEB) is a member of helix-loop-helix (HLH) protein family. TCF12 is a transcriptional regulator that involved in the initiation of neuronal differentiation. It's also known as E proteins, and activates transcription by binding to the E box (5'-CANNTG-3'), because of their direct DNA (E-box) binding ability. TCF12 was shown to suppress E-cadherin expression during the early stages of renal tubular epithelial cell dedifferentiation.

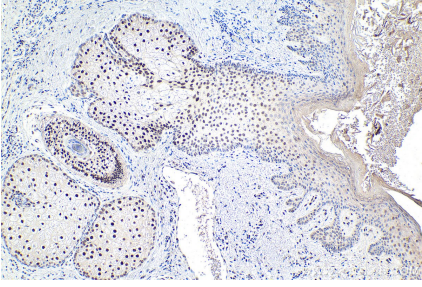
Synonyms

bHLHb20, DNA binding protein HTF4, E box binding protein, HEB, HsT17266, HTF4, TCF 12, TCF12, TCF12/HEB, transcription factor 12, Transcription factor HTF 4

For technical support and original validation data for this product please contact:
T: 1 (888) 4PTGLAB (1-888-478-4522) (toll free in USA), or 1(312) 455-8498 (outside USA)
E: proteintech@ptglab.com
W: ptglab.com

This product is exclusively available under Proteintech Group brand and is not available to purchase from any other manufacturer.

Selected Validation Data



Immunohistochemical analysis of paraffin-embedded human skin cancer tissue slide using KHC1888 (TCF12 IHC Kit).