

For Research Use Only

# HINFP Polyclonal antibody

Catalog Number: 10066-2-AP



## Basic Information

<b>Catalog Number:</b> 10066-2-AP	<b>GenBank Accession Number:</b> BC001073	<b>Purification Method:</b> Antigen affinity purification
<b>Size:</b> 150ul , Concentration: 500 µg/ml by Nanodrop and 133 µg/ml by Bradford method using BSA as the standard;	<b>GeneID (NCBI):</b> 25988	<b>Recommended Dilutions:</b> WB 1:200-1:1000 IF 1:10-1:100
<b>Source:</b> Rabbit	<b>Full Name:</b> histone H4 transcription factor	
<b>Isotype:</b> IgG	<b>Calculated MW:</b> 60 kDa	
<b>Immunogen Catalog Number:</b> AG0115	<b>Observed MW:</b> 60 kDa	

## Applications

<b>Tested Applications:</b> IF, WB, ELISA	<b>Positive Controls:</b>
<b>Species Specificity:</b> human, mouse, rat	<b>WB :</b> human liver tissue, <b>IF :</b> HeLa cells, L02 cells

## Background Information

Methylation of CpG dinucleotides is the major epigenetic modification in higher eukaryotic genomes. MIZF interacts with MBD2, a methyl-CpG-binding protein playing a critical role in DNA methylation-mediated transcriptional repression. MIZF functions as a negative regulator of transcription by binding to MBD2 and recruiting histone deacetylase (HDAC)-containing complexes. MIZF mRNA is present in various human tissues and cell lines and expressed as a 60kd protein.

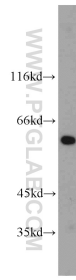
## Storage

**Storage:**  
Store at -20°C. Stable for one year after shipment.  
**Storage Buffer:**  
PBS with 0.02% sodium azide and 50% glycerol pH 7.3.  
**Aliquoting is unnecessary for -20°C storage**

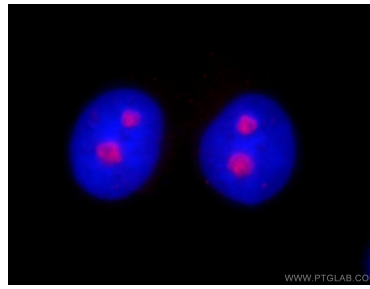
For technical support and original validation data for this product please contact:  
T: 1 (888) 4PTGLAB (1-888-478-4522) (toll free in USA), or 1(312) 455-8498 (outside USA)      E: proteintech@ptglab.com  
W: ptglab.com

**This product is exclusively available under Proteintech Group brand and is not available to purchase from any other manufacturer.**

## Selected Validation Data



human liver tissue were subjected to SDS PAGE followed by western blot with 10066-2-AP (HINFP antibody) at dilution of 1:300 incubated at room temperature for 1.5 hours.



Immunofluorescent analysis of fixed HeLa cells using 10066-2-AP (HINFP antibody) at dilution of 1:25 and Rhodamine-Goat anti-Rabbit IgG.