

For Research Use Only

# PCTAIRE1 Polyclonal antibody

Catalog Number: 10102-1-AP

2 Publications



## Basic Information

**Catalog Number:**

10102-1-AP

**Size:**

150UL, Concentration: 750 µg/ml by Nanodrop and 400 µg/ml by Bradford method using BSA as the standard;

**Source:**

Rabbit

**Isotype:**

IgG

**Immunogen Catalog Number:**

AG0151

**GenBank Accession Number:**

BC001048

**GeneID (NCBI):**

5127

**Full Name:**

PCTAIRE protein kinase 1

**Calculated MW:**

56 kDa

**Observed MW:**

56-63 kDa

**Purification Method:**

Antigen affinity purification

**Recommended Dilutions:**

WB 1:500-1:1000

IP 0.5-4.0 ug for IP and 1:500-1:1000 for WB

IHC 1:50-1:500

## Applications

**Tested Applications:**

IHC, IP, WB, ELISA

**Cited Applications:**

IHC, WB

**Species Specificity:**

human, mouse, rat

**Cited Species:**

human

**Note-IHC: suggested antigen retrieval with TE buffer pH 9.0; (\*) Alternatively, antigen retrieval may be performed with citrate buffer pH 6.0**

**Positive Controls:**

WB: mouse brain tissue,

IP: mouse brain tissue,

IHC: human pancreas tissue,

## Background Information

### Notable Publications

Author	Pubmed ID	Journal	Application
Hong-Fang Duan	25809707	Tumour Biol	WB
Jie Xie	29344296	Theranostics	WB, IHC

## Storage

**Storage:**

Store at -20°C. Stable for one year after shipment.

**Storage Buffer:**

PBS with 0.02% sodium azide and 50% glycerol pH 7.3.

Aliquoting is unnecessary for -20°C storage

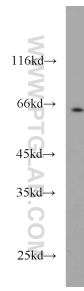
For technical support and original validation data for this product please contact:

T: 1 (888) 4PTGLAB (1-888-478-4522) (toll free in USA), or 1(312) 455-8498 (outside USA)

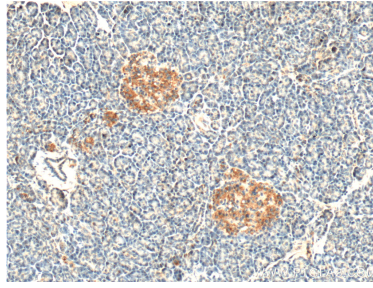
E: [proteintech@ptglab.com](mailto:proteintech@ptglab.com)  
W: [ptglab.com](http://ptglab.com)

**This product is exclusively available under Proteintech Group brand and is not available to purchase from any other manufacturer.**

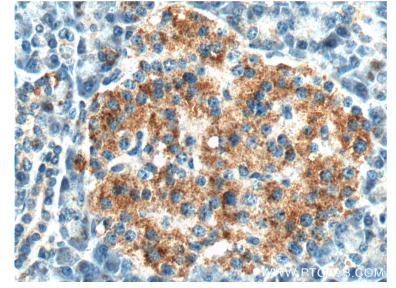
## Selected Validation Data



mouse brain tissue were subjected to SDS PAGE followed by western blot with 10102-1-AP (PCTAIRE1 antibody) at dilution of 1:600 incubated at room temperature for 1.5 hours.



Immunohistochemical analysis of paraffin-embedded human pancreas tissue slide using 10102-1-AP (PCTAIRE1 antibody at dilution of 1:200 (under 10x lens).



Immunohistochemical analysis of paraffin-embedded human pancreas tissue slide using 10102-1-AP (PCTAIRE1 antibody at dilution of 1:200 (under 40x lens).