

For Research Use Only

# Calpain 6 Polyclonal antibody

Catalog Number: 10120-1-AP **2 Publications**



## Basic Information

**Catalog Number:**

10120-1-AP

**Size:**

150UL, Concentration: 500 µg/ml by Nanodrop and 500 µg/ml by Bradford method using BSA as the standard;

**Source:**

Rabbit

**Isotype:**

IgG

**Immunogen Catalog Number:**

AG0160

**GenBank Accession Number:**

BC000730

**GeneID (NCBI):**

827

**Full Name:**

calpain 6

**Calculated MW:**

75 kDa

**Observed MW:**

66-75 kDa

**Purification Method:**

Antigen affinity purification

**Recommended Dilutions:**

WB 1:500-1:1000

IP 0.5-4.0 µg for IP and 1:200-1:1000 for WB

## Applications

**Tested Applications:**

IP, WB, ELISA

**Cited Applications:**

IF, IHC, WB

**Species Specificity:**

human, mouse, rat

**Cited Species:**

human, rat

**Positive Controls:**

WB: human placenta tissue, A549 cells, mouse placenta tissues

IP: human placenta tissue,

## Background Information

## Notable Publications

Author	Pubmed ID	Journal	Application
Xiaojuan Su	31403686	J Neuropathol Exp Neurol	WB,IF
Shinobu Goto	32852077	Am J Reprod Immunol	WB,IHC

## Storage

**Storage:**

Store at -20°C. Stable for one year after shipment.

**Storage Buffer:**

PBS with 0.1% sodium azide and 50% glycerol pH 7.3.

Aliquoting is unnecessary for -20°C storage

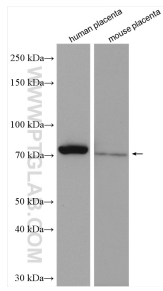
For technical support and original validation data for this product please contact:

T: 1 (888) 4PTGLAB (1-888-478-4522) (toll free in USA), or 1(312) 455-8498 (outside USA)

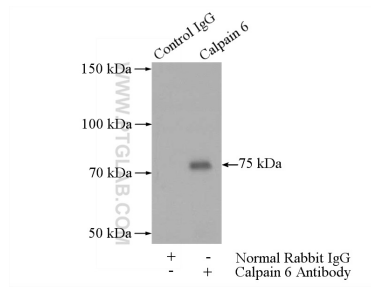
E: proteintech@ptglab.com  
W: ptglab.com

This product is exclusively available under Proteintech Group brand and is not available to purchase from any other manufacturer.

## Selected Validation Data



Various lysates were subjected to SDS PAGE followed by western blot with 10120-1-AP (Calpain 6 antibody) at dilution of 1:600 incubated at room temperature for 1.5 hours.



IP Result of anti-Calpain 6 (IP:10120-1-AP, 4ug; Detection:10120-1-AP 1:300) with human placenta tissue lysate 1520ug.