

For Research Use Only

# KIFC3 Polyclonal antibody

Catalog Number: 10125-2-AP

Featured Product

9 Publications



## Basic Information

### Catalog Number:

10125-2-AP

### Size:

150ul, Concentration: 400 ug/ml by Nanodrop and 220 ug/ml by Bradford method using BSA as the standard;

### Source:

Rabbit

### Isotype:

IgG

### Immunogen Catalog Number:

AG0172

### GenBank Accession Number:

BC001211

### GeneID (NCBI):

3801

### UNIPROT ID:

Q9BVG8

### Full Name:

kinesin family member C3

### Calculated MW:

78 kDa

### Observed MW:

80-85 kDa, 95-100 kDa

### Purification Method:

Antigen affinity purification

### Recommended Dilutions:

WB 1:500-1:1000

IP 0.5-4.0 ug for 1.0-3.0 mg of total protein lysate

IHC 1:50-1:500

## Applications

### Tested Applications:

WB, IHC, IP, ELISA

### Cited Applications:

WB, IF, CoIP

### Species Specificity:

human, mouse

### Cited Species:

human, mouse, rat, monkey

**Note-IHC: suggested antigen retrieval with TE buffer pH 9.0; (\*) Alternatively, antigen retrieval may be performed with citrate buffer pH 6.0**

### Positive Controls:

WB : mouse lung tissue, mouse kidney tissue

IP : mouse kidney tissue,

IHC : human intrahepatic cholangiocarcinoma tissue,

## Notable Publications

Author	Pubmed ID	Journal	Application
Tatsuo Miyamoto	32368833	EMBO J	WB
Jielu Hao Robichaud	39266565	Nat Commun	WB,IF
Jia-Qian Ju	38553728	Cell Commun Signal	WB,CoIP,IF

## Storage

### Storage:

Store at -20°C. Stable for one year after shipment.

### Storage Buffer:

PBS with 0.02% sodium azide and 50% glycerol pH 7.3.

Aliquoting is unnecessary for -20°C storage

\*\*\* 20ul sizes contain 0.1% BSA

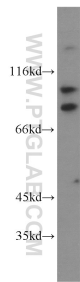
For technical support and original validation data for this product please contact:

T: 1 (888) 4PTGLAB (1-888-478-4522) (toll free in USA), or 1(312) 455-8498 (outside USA)

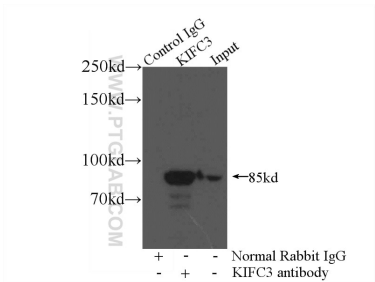
E: [proteintech@ptglab.com](mailto:proteintech@ptglab.com)  
W: [ptglab.com](http://ptglab.com)

This product is exclusively available under Proteintech Group brand and is not available to purchase from any other manufacturer.

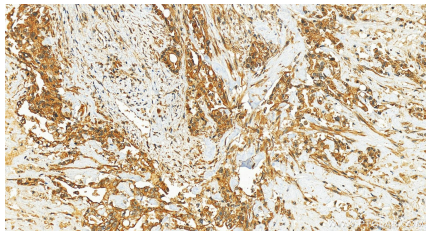
Selected Validation Data



mouse lung tissue were subjected to SDS PAGE followed by western blot with 10125-2-AP (KIFC3 antibody) at dilution of 1:500 incubated at room temperature for 1.5 hours.



IP result of anti-KIFC3 (IP:10125-2-AP, 4ug; Detection:10125-2-AP 1:500) with mouse kidney tissue lysate 7200ug.



Immunohistochemical analysis of paraffin-embedded human intrahepatic cholangiocarcinoma tissue slide using 10125-2-AP (KIFC3 antibody) at dilution of 1:100 (under 20x lens). Heat mediated antigen retrieval with Tris-EDTA buffer (pH 9.0).